

CATALOG #	TYPE	
JOB NAME	WATTAGE	VOLTAGE

9" x 9" 2 Triple 57 WATT MAXIMUM

FRS-09090

Open Square with High Lumen Output

Features

Lamp

- Designed for two 4-pin triple/four tube amalgam compact fluorescent lamp (CFL) or 2x57W triple/four tube.

Ballast: Multi Voltage

- Installed electronic high power factor, thermally protected. For lower wattages: Option -43.
- 120-277 multi-volt; 50/60 Hz. THD < 10%.
- ClickQuick connectors for easy service.
- Single circuit wiring or see Option -31.
- Cold weather -22°F (-30°C).
- End of lamp life protection circuitry.
- Internally fused. Also see Option -F30.

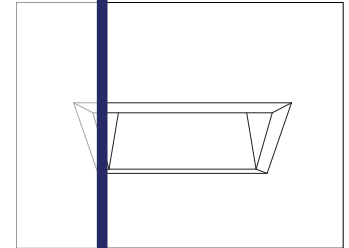
Reflectors

- Upper: Specular Alzak® aluminum.
- Lower: Clear Softex aluminum, self-flanged.
- See Options for other finishes.

THIS PRODUCT IS NO LONGER AVAILABLE

Please consult QUOTATIONS

for the best alternative.



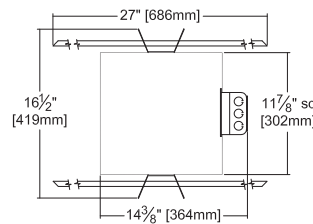
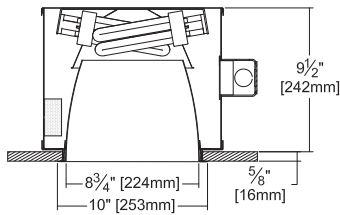
Recessed Square
Open
Dual Reflector

Selected Optional Trims:

- All White Option -30
- Softex Titanium Option -57
- Softex Dune Option -71
- Softex Pewter Option -77
- Softex Wheat Option -91
- Conjugated Option -CG

Performance at a Glance

FRS-09090

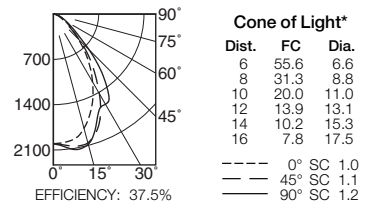


Ceiling Cut-out
9 1/2" Sq.

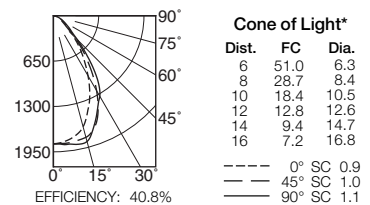
Cone of Light Key

- Ft. Distance from fixture
- FC Footcandles (average)
- Dia. Circle of light at 50% of FC
- * Dia. (in ft.) shown is where FC value is half the FC at nadir.

FRS-09090 (2 Triple 57W)



FRS-09090-43 (2 Triple 42W)



THE KIRLIN COMPANY

3401 EAST JEFFERSON AVENUE • DETROIT, MICHIGAN 48207-4232
(313) 259-6400 • Fax: (313) 259-9409 OR (313) 259-3121 • www.kirlinlighting.com

RENAISSANCE SERIES
COMPACT FLUORESCENT LIGHTING

MAXIMUM WATTAGE

2 Triple 57

CATALOG NUMBER

FRS-09090

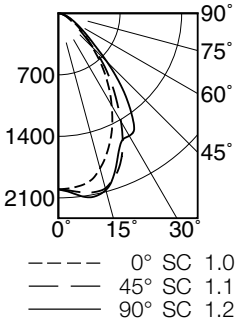
DUE TO OUR CONTINUING EFFORT TO IMPROVE PRODUCTS, TECHNICAL INFORMATION IS SUBJECT TO CHANGE WITHOUT NOTICE.

Alzak® is a registered trademark of ALCOA.

Detailed Photometry - Installed Fixture

Photometry from I.T.L., Boulder, CO

FRS-09090 (2 Triple 57)



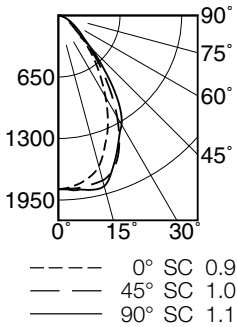
EFFICIENCY : 37.5%

CANDLEPOWER DISTRIBUTION					
	0.0	22.5	45.0	67.5	90.0
0	2003	2003	2003	2003	2003
5	1989	2003	2033	2051	2061
15	1827	1928	2061	2088	2082
25	1442	1609	1721	1686	1659
35	981	1114	1117	1413	1477
45	546	559	579	745	782
55	284	266	235	298	336
65	147	131	116	141	166
75	64	58	52	62	71
85	12	12	11	13	14
90	0	0	0	0	0

COEFFICIENTS OF UTILIZATION							
RF	20						
	RC	80			50		
		70	50	30	10	50	30
1	42	41	39	38	38	37	37
2	39	37	35	33	35	33	32
3	36	33	31	29	32	30	28
4	34	30	28	26	29	27	25
5	32	28	25	23	27	24	23
6	30	26	23	21	25	22	21
7	28	24	21	19	23	20	19
8	26	22	19	17	21	19	17
9	25	20	18	16	20	17	16
10	23	19	16	15	18	16	15

ITL TEST #54890 *LER=28.2 •AEC=\$8.53

FRS-09090-43 (2 Triple 42)



EFFICIENCY : 40.8%

CANDLEPOWER DISTRIBUTION					
	0.0	22.5	45.0	67.5	90.0
0	1836	1836	1836	1836	1836
5	1809	1816	1836	1848	1854
15	1648	1728	1804	1851	1866
25	1235	1363	1516	1513	1493
35	765	853	938	1090	1093
45	401	382	419	479	490
55	214	194	168	205	239
65	116	101	90	104	125
75	52	44	41	46	56
85	10	10	10	10	12
90	0	0	0	0	0

COEFFICIENTS OF UTILIZATION							
RF	20						
	RC	80			50		
		70	50	30	10	50	30
1	46	44	43	42	42	41	40
2	43	40	38	36	38	37	35
3	40	37	34	32	35	33	31
4	37	34	31	29	32	30	28
5	35	31	28	26	30	27	25
6	33	28	26	23	27	25	23
7	31	26	23	21	26	23	21
8	29	25	22	20	24	21	20
9	27	23	20	18	22	20	18
10	26	21	19	17	21	18	17

ITL TEST #54891 *LER=30.4 •AEC=\$7.88

* LER = Luminaire Efficiency Rating
 LER = Luminaire Effic. x Total Lamp Lumens x Ballast Factor
 Input Watts

* AEC = Annual Energy Cost per
 1000 lumens (based on 3000
 hours use @ \$0.08 KWH).

LIMITED WARRANTY: CATALOGED KIRLIN FIXTURES ARE WARRANTED FREE OF DEFECTS IN WORKMANSHIP OR MATERIAL FOR THREE YEARS FROM DATE OF PURCHASE. INSTALLLED TO N.E.C. IN NORMAL USE. Manufacturer at his option will replace or repair such fixture or refund the purchase price on presentation of proof of defective fixture at the offices of manufacturer within three years of original shipment. Liability of manufacturer is limited to the foregoing, and manufacturer shall not be liable for any other damages, direct or indirect, sustained or suffered by purchaser or any person. This warranty is applied to the buyer in place of all other warranties, expressed or implied. Seller does not warrant as to merchantability or fitness for a particular use, nor will any oral statement constitute a warranty or amend this specific warranty. Abnormal use, abuse of the fixture, improper installation, repair, or modification of the fixture without prior written authorization from the manufacturer will render the warranty void.

Options

Ballast, Wattage and Voltage

- 39 Installed electronic dimming ballast. Indoor use. 10°C (50°F) minimum start. Specify wattage, voltage and brand.
- 43 Lower wattage. For 4-pin 2x42/32/26W triple or 2x26W quad (multi-wattage/voltage). Specify wattage.
- 84 Wired for two circuits. Also see -FD.
- 97 Specify other voltage. Consult factory.
- 98 347 volt, 50/60 Hz. input. Consult factory.

Emergency Ballast - Specify Voltage¹

Internal (factory installed) ballast, test switch and indicator light. Suitable for damp locations from 0° to 50°C (32° to 122°F) or with Cold Weather version (see -CE) -20° to 55°C (-4° to 131°F).

- 73 Internal 1-lamp EM ballast. Specify voltage.
- CE Internal cold weather (-20° to 55°C) 1-lamp EM ballast. Specify voltage.
- HE¹ Internal higher lumen (up to 1250) 1-lamp EM ballast. 13-42W only. Specify voltage.

Trims

- 30 All white lower trim. (CP x .95)
- 31 White acrylic enameled lower trim flange.
- 32 White oversize trim extender. Specify size.
- 45 Gasket between ceiling and trim flange.
- 57 SofTex Titanium lower trim. (CP x .80)
- 71 SofTex Dune lower trim. (CP x .88)
- 77 SofTex Pewter lower trim. (CP x .85)
- 79 Extension collar for ceilings up to 2" thick. (CP x .91)
- 90 SofTex Champagne Gold lower trim. (CP x .91)
- 91 SofTex Wheat lower trim. (CP x .87)

- 94 Custom color/finish. Specify. Consult factory.

Top Access

- TA Top access for servicing from above.

Other

- 99 Special modification. Consult factory.
- FD Two additional in-line fuses. One per ballast. Use with Option -84. Not available with Option -98 (347V).
- FS Additional in-line fuse. Not available with Option -98 (347V).
- LE With 4-pin electronic lamp. 3500°K standard. 82 CRI and 12,000 hour life. Specify wattage, style and color temperature.

¹ Visit www.kirlinlighting.com for most current performance / specifications.

SUBMITTAL DATA

APPROVAL STAMP

JOB NAME

TYPE

WATTAGE

VOLTAGE

CATALOG NUMBER