

CATALOG #	TYPE	
JOB NAME	WATTAGE	VOLTAGE

8" x 8" 1 Triple 57 WATT MAXIMUM

FRS-08104

Shallow Square Regressed Lens
Downlights

Features

Lamp

- Designed for one 4-pin triple/four tube compact fluorescent lamp; 57W triple tube

Ballast: Multi Voltage

- Installed electronic high power factor, thermally protected. For lower wattages: Option -43.
- 120-277 multi-volt; 50/60 Hz. THD < 10%.
- ClickQuick connectors for easy service.
- Cold weather -22°F (-30°C).
- End of lamp life protection circuit. For details see Option -F5.
- Internally fused. Also see Option -F5.

Reflector

- Specular Alzak® aluminum.

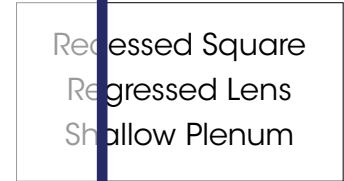
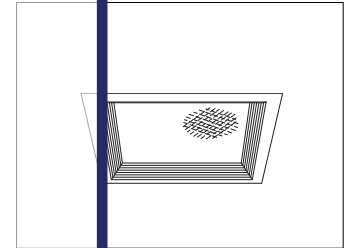
Trim Assembly

- Tapered aluminum black OptiGroove with white flange or all white smooth self-flanged trim (Option -40) as shown in section view.
- Regressed temperate resistant lens.

THIS PRODUCT IS NO LONGER AVAILABLE

Please consult QUOTATIONS

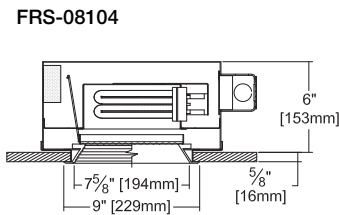
for the best alternative.



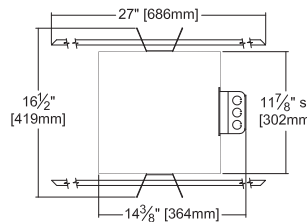
Selected Optional Trims:

- White Grooveless Flare Option -40

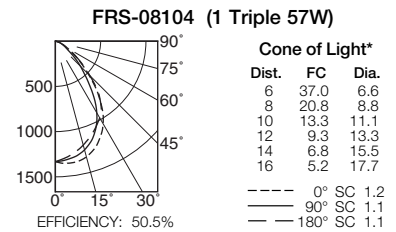
Performance at a Glance



Option -40 Also Shown



Ceiling Cut-out
8 1/2" Sq.



Cone of Light Key
Ft. Distance from fixture
FC Footcandles (average)
Dia. Circle of light at 50% of FC
 * Dia. (in ft.) shown is where FC value is half the FC at nadir.

THE KIRLIN COMPANY

3401 EAST JEFFERSON AVENUE • DETROIT, MICHIGAN 48207-4232
 (313) 259-6400 • Fax: (313) 259-9409 OR (313) 259-3121 • www.kirlinlighting.com

**RENAISSANCE SERIES
 COMPACT FLUORESCENT LIGHTING**

MAXIMUM WATTAGE

1 Triple 57

CATALOG NUMBER

FRS-08104

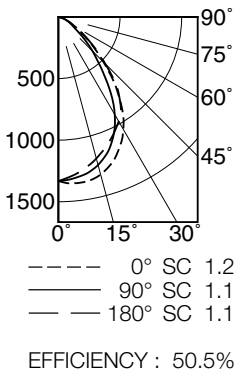
DUE TO OUR CONTINUING EFFORT TO IMPROVE PRODUCTS, TECHNICAL INFORMATION IS SUBJECT TO CHANGE WITHOUT NOTICE.

Alzak® is a registered trademark of ALCOA.

Detailed Photometry - Installed Fixture

Photometry from I.T.L., Boulder, CO

FRS-08104 (1 Triple 57)



CANDLEPOWER DISTRIBUTION					
	0.0	45.0	90.0	135.0	180.0
0	1332	1332	1332	1332	1332
5	1356	1340	1318	1298	1294
15	1324	1300	1244	1193	1189
25	1171	1140	1059	1025	1053
35	897	837	731	783	881
45	517	477	391	453	538
55	243	227	169	219	244
65	101	97	88	93	95
75	35	32	34	28	30
85	0	0	0	0	0
90	0	0	0	0	0

COEFFICIENTS OF UTILIZATION							
RF	20						
	80			50			
FC	70	50	30	10	50	30	10
RW	70	50	30	10	50	30	10
1	56	55	53	52	51	50	49
2	53	49	47	45	47	45	43
3	49	45	42	39	43	40	38
4	46	41	37	34	39	36	34
5	42	37	33	31	36	33	30
6	40	34	30	28	33	30	27
7	37	31	28	25	30	27	25
8	35	29	25	23	28	25	23
9	33	27	23	21	26	23	21
10	31	25	22	19	24	21	19

ITL TEST #55423 *LER=31.9 •AEC=\$7.52

* LER = Luminaire Efficiency Rating

$$LER = \frac{\text{Luminaire Effic.} \times \text{Total Lamp Lumens} \times \text{Ballast Factor}}{\text{Input Watts}}$$

• AEC = Annual Energy Cost per 1000 lumens (based on 3000 hours use @ \$0.08 KWH).

Options

Ballast, Wattage and Voltage

- 39 Installed electronic dimming ballast. Indoor use. 10°C (50°F) minimum start. Specify wattage, voltage and brand. Not available with Option -75, -CR or -HR.
- 43 Lower wattage. For 4-pin 42/32/26W triple or 26W quad (multi-wattage/voltage). Specify wattage.
- 97 Specify other voltage. Consult factory.
- 98 347 volt, 50/60 Hz. input. Consult factory.

Emergency Ballast - Specify Voltage¹

Remote (field mounted) ballast, test switch and indicator light. Suitable for damp locations from 0° to 50°C (32° to 122°F) or with Cold Weather

- version (see -CR) -20° to 55°C (-4° to 131°F).
- 75 Remote 1-lamp EM ballast. Specify voltage.
- CR Remote cold weather (-20° to 55°C) 1-lamp EM ballast. Specify voltage.
- HR¹ Remote higher lumen (up to 1250) 1-lamp EM ballast. 13-42W only. Specify voltage.

Lenses and Trims

- 13 Vandal resistant tempered prismatic C#73 spread lens above 1/8" flat polycarbonate.
- 17 .187" prismatic high strength acrylic lens.
- 18 Opal flat glass diffuser.
- 20 White aluminum 1/2" cube egg-crate louver.
- 21 White flat polycarbonate diffuser.
- 32 White oversize trim extender. Specify size.
- 40 White grooveless flare trim. (CP x 1.10)

- 45 Gasket between ceiling and trim flange.
- 46 Gasket between trim and lens.
- 79 Extension collar for ceilings up to 2" thick.
- 94 Custom color/finish. Specify. Consult factory.
- CF High temperature color filter. Specify color.
- UV UV filter. Consult factory.

Other

- 99 Special modification. Consult factory.
- FS Additional in-line fuse. Not available with Option -98 (347V).
- LE With 4-pin electronic lamp. 3500°K standard. 82 CRI and 12,000 hour life. Specify wattage, style and color temperature.

¹ Visit www.kirlinlighting.com for most current performance / specifications.

SUBMITTAL DATA

APPROVAL STAMP

JOB NAME

TYPE

WATTAGE

VOLTAGE

CATALOG NUMBER

LIMITED WARRANTY: CATALOGED KIRLIN FIXTURES ARE WARRANTED FREE OF DEFECTS IN WORKMANSHIP OR MATERIAL FOR THREE YEARS FROM DATE OF PURCHASE. INSTALLER TO N.E.C. IN NORMAL USE. Manufacturer at his option will replace or repair such fixture or refund the purchase price on presentation of proof of defective fixture at the offices of manufacturer within three years of original shipment. Liability of manufacturer is limited to the foregoing, and manufacturer shall not be liable for any other damages, direct or indirect, sustained or suffered by purchaser or any person. This warranty is supplied to the buyer in place of all other warranties, expressed or implied. Seller does not warrant as to merchantability or fitness for a particular use, nor will any oral statement constitute a warranty or amend this specific warranty. Abnormal use, abuse of the fixture, improper installation, repair, or modification of the fixture without prior written authorization from the manufacturer will render the warranty void.