

CATALOG #	TYPE	
JOB NAME	WATTAGE	VOLTAGE

6" x 6" 2 Triple 32 WATT MAXIMUM

FRS-06099

High Output Square Recessed Wall Wash

Features

Lamp

- Designed for two 4-pin triple tube and quad compact fluorescent lamps: 32/36W triple or 26W quad.

Ballast: Multi Wattage/Voltage

- Installed electronic high power factor, thermally protected. For lower wattages: Option -43.
- 120-277 multi-volt; 50/60 Hz. THD < 10%.
- ClickQuick connectors for easy service.
- Single circuit wiring or see Option -44.
- Cold weather -22°F (-30°C).
- End of lamp life protection circuit.
- Internally fused. Also see Option -45.

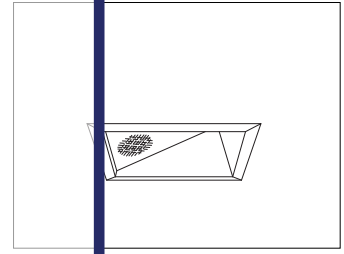
Trim Assembly

- Upper: Special Alzak® aluminum.
- Lower: Clear SofTex aluminum, self-flanged.
- Microlux tempered clear glass lens.

THIS PRODUCT IS NO LONGER AVAILABLE

Please consult QUOTATIONS

for the best alternative.



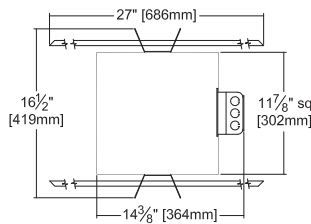
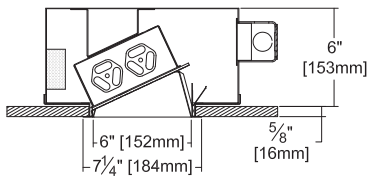
Recessed Square Lensed Wall Wash Shallow Plenum

Selected Optional Trims:

- All White Option -30
- SofTex Titanium Option -57
- SofTex Dune Option -71
- SofTex Pewter Option -77
- SofTex Wheat Option -91

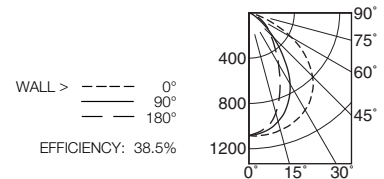
Performance at a Glance

FRS-06099



Ceiling Cut-out 6 1/2" Sq.

FRS-06099 (2 Triple 32W)



DISTANCE FROM CEILING IN FEET	SINGLE FIXTURE					MULTIPLE FIXTURES					
	1'	2'	3'	4'		3' CENTERS	4' CENTERS				
1	13.7	9.8	5.0	1.9	1.0	18.9	17.2	18.9	17.8	13.3	17.8
2	30.8	24.4	13.1	5.5	2.3	43.5	42.2	43.5	34.1	28.3	34.1
3	30.4	26.2	17.0	8.8	4.1	50.5	50.7	50.5	39.7	37.0	39.7
4	22.6	20.5	15.2	9.6	5.3	44.9	45.3	44.9	34.6	34.1	34.6
5	15.5	14.1	11.5	8.1	5.3	36.7	36.9	36.7	28.4	28.3	28.4
6	10.8	10.2	8.8	6.8	5.0	29.3	29.5	29.3	23.1	23.1	23.1
7	7.8	7.4	6.5	5.5	4.3	24.1	24.4	24.1	19.2	19.1	19.2
8	6.0	5.9	5.3	4.4	3.6	20.3	20.5	20.3	16.5	16.2	16.5
9	4.6	4.6	4.3	3.8	3.2	17.9	17.1	17.9	14.1	13.2	14.1

THE KIRLIN COMPANY

3401 EAST JEFFERSON AVENUE • DETROIT, MICHIGAN 48207-4232
 (313) 259-6400 • Fax: (313) 259-9409 OR (313) 259-3121 • www.kirlinlighting.com

RENAISSANCE SERIES
COMPACT FLUORESCENT LIGHTING

MAXIMUM WATTAGE
2 Triple 32

CATALOG NUMBER
FRS-06099

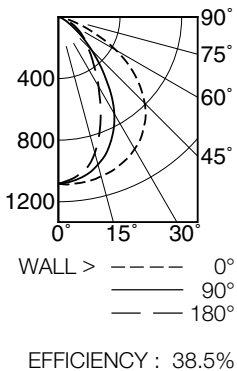
DUE TO OUR CONTINUING EFFORT TO IMPROVE PRODUCTS, TECHNICAL INFORMATION IS SUBJECT TO CHANGE WITHOUT NOTICE.

Alzak® is a registered trademark of ALCOA.

Detailed Photometry - Installed Fixture

Photometry from I.T.L., Boulder, CO

FRS-06099 (2 Triple 32)



CANDLEPOWER DISTRIBUTION					
	0.0	45.0	90.0	135.0	180.0
0	1083	1083	1083	1083	1083
5	1087	1081	1069	1059	1054
15	1071	1035	992	946	914
25	1027	942	836	707	649
35	942	828	585	422	415
45	792	634	307	216	266
55	570	374	122	101	175
65	277	144	41	35	83
75	72	35	12	11	19
85	7	3	2	2	4
90	0	0	0	0	0

COEFFICIENTS OF UTILIZATION							
RF	20						
	80			50			
RC	70	50	30	10	50	30	10
1	43	41	40	39	39	38	37
2	40	37	35	33	35	34	32
3	37	34	31	29	32	30	28
4	34	30	28	25	29	27	25
5	32	28	25	22	26	24	22
6	30	25	22	20	24	22	20
7	28	23	20	18	22	20	18
8	26	21	18	16	21	18	16
9	24	20	17	15	19	17	15
10	23	18	16	14	18	15	14

ITL TEST #54894 *LER=23.6 •AEC=\$10.16

* LER = Luminaire Efficiency Rating

$$LER = \frac{\text{Luminaire Effic.} \times \text{Total Lamp Lumens} \times \text{Ballast Factor}}{\text{Input Watts}}$$

• AEC = Annual Energy Cost per 1000 lumens (based on 3000 hours use @ \$0.08 KWH).

Options

Ballast, Wattage and Voltage

- 39 Installed electronic dimming ballast. Indoor use. 10°C (50°F) minimum start. Specify wattage, voltage and brand.
- 43 Lower wattage: for either 4-pin electronic 2x18W triple/quad or 2x13W quad (only). Specify wattage.
- 84 Wired for two circuits. Also see -FD.
- 97 Specify other voltage. Consult factory.
- 98 347 volt, 50/60 Hz. THD < 10%. input. Consult factory.

Emergency Ballast - Specify Voltage¹

Internal (factory installed) ballast, test switch and

indicator light. Suitable for damp locations from 0° to 50°C (32° to 122°F) or with Cold Weather version (see -CE) -20° to 55°C (-4° to 131°F).

- 73 Internal 1-lamp EM ballast. Specify voltage.
- CE Internal cold weather (-20° to 55°C) 1-lamp EM ballast. Specify voltage.
- HE¹ Internal higher lumen (up to 1250) 1-lamp EM ballast. 13-42W only. Specify voltage.

Trims

- 30 All white lower trim. (CP x .95)
- 31 White acrylic enameled lower trim flange.
- 32 White oversize trim extender. Specify size.
- 45 Gasket between ceiling and trim flange.
- 57 SofTex Titanium lower trim. (CP x .80)
- 71 SofTex Dune lower trim. (CP x .88)

- 77 SofTex Pewter lower trim. (CP x .85)
- 90 SofTex Champagne Gold lower trim. (CP x .91)
- 91 SofTex Wheat lower trim. (CP x .87)
- 94 Custom color/finish. Specify. Consult factory.

Other

- 99 Special modification. Consult factory.
- FD Two additional in-line fuses. One per ballast. Use with Option -84. Not available with Option -98 (347V).
- FS Additional in-line fuse. Not available with Option -98 (347V).
- LE With 4-pin electronic lamp. 3500°K standard. 82 CRI and 12,000 hour life. Specify wattage, style and color temperature.

¹ Visit www.kirlinlighting.com for most current performance / specifications.

SUBMITTAL DATA

JOB NAME

TYPE

WATTAGE

VOLTAGE

CATALOG NUMBER

APPROVAL STAMP

LIMITED WARRANTY: CATALOGED KIRLIN FIXTURES ARE WARRANTED FREE OF DEFECTS IN WORKMANSHIP OR MATERIAL FOR THREE YEARS FROM DATE OF PURCHASE. INSTALLER TO N.E.C. IN NORMAL USE. Manufacturer at his option will replace or repair such fixture or refund the purchase price on presentation of proof of defective fixture at the offices of manufacturer within three years of original shipment. Liability of manufacturer is limited to the foregoing, and manufacturer shall not be liable for any other damages, direct or indirect, sustained or suffered by purchaser or any person. This warranty is supplied to the buyer in place of all other warranties, expressed or implied. Seller does not warrant as to merchantability or fitness for a particular use, nor will any oral statement constitute a warranty or amend this specific warranty. Abnormal use, abuse of the fixture, improper installation, repair, or modification of the fixture without prior written authorization from the manufacturer will render the warranty void.