

CATALOG #	TYPE	
JOB NAME	WATTAGE	VOLTAGE

6" x 6" 1 Triple 42 WATT MAXIMUM

FRS-06096

Square Lensed Wall Wash:
Air Tight with type C Optipro

THIS PRODUCT IS NO LONGER AVAILABLE

Features

Lamp

- Designed for one 4-pin triple tube amorphous halophosphate fluorescent lamp: 42/32/26W triple or 26W quad.

Ballast: Multi Wattage/Voltage

- Installed electronic high power factor, thermally protected. For lower wattages: Option -43.
- 120-277 multi-volt; 50/60 Hz. THD < 10%.
- ClickQuick connectors for easy service.
- Cold weather -22°F (-30°C).
- End of lamp life protection circuit. For further details see Option -FS.
- Internally fused. Also see Option -FS.

Trim Assembly

- Upper: Special Alzak® aluminum.
- Lower: Clear SofTex aluminum, 2.0 mil thick.
- MicroLux tempered microprismatic lens.

Aluminum Housing: Shallow Plenum

- Acrylic enamel. Rustproof. Exceeds 1000 hour ASTM salt spray test.

- Lightweight: Minimizes ceiling load.
- Cool operation: Extends component life.
- Entire luminaires serviceable through a single. Back-to-back plastic mounting brackets.
- Air-tight design. See Option -AT.
- Color Box (1/2" and 3/4" thick room).
- Prewired 14 GA (NEC) galvanized steel, UL listed.

Installation

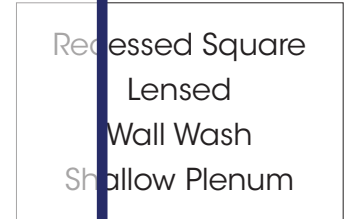
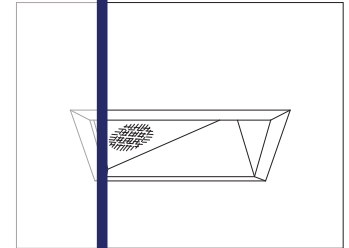
- 27" galvanized hanger bars with adjustable mounting brackets (2) supplied.
- Use these and/or optional mounting brackets in other locations.

UL Listing

- UL Type: E, Class II, Division 2, Ambient Temperature Limited, with insulation. See Option -AT.
- Through-branch conductors (6 #12).

Three Year Limited Warranty

- Includes complete standard textured ballasts.



Selected Optional Trims:

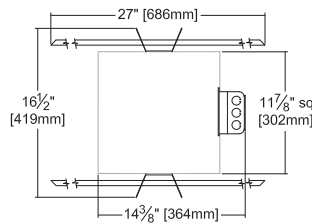
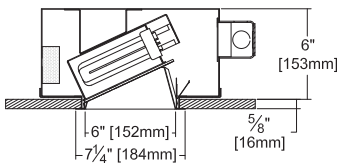
- All White Option -30
- Softex Titanium Option -57
- Softex Dune Option -71
- Softex Pewter Option -77
- Softex Wheat Option -91

Please consult **QUOTATIONS**

for the best alternative.

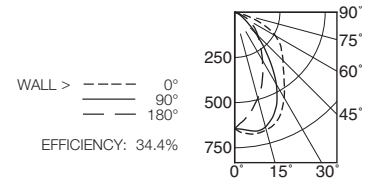
Performance at a Glance

FRS-06096



Ceiling Cut-out
6 3/4" Sq.

FRS-06096 (1 Triple 42W)



DISTANCE FROM CEILING IN FEET	SINGLE FIXTURE				MULTIPLE FIXTURES						
	1'	2'	3'	4'	3' CENTERS	4' CENTERS	3' CENTERS	4' CENTERS			
1	9.3	6.3	2.9	1.0	0.6	12.0	10.4	12.0	10.8	7.5	10.8
2	17.3	13.4	6.8	2.6	1.1	23.1	22.4	23.1	18.4	14.7	18.4
3	15.1	13.3	8.6	4.1	1.8	24.8	25.7	24.8	19.6	18.7	19.6
4	11.5	11.0	8.3	5.0	2.6	23.2	24.2	23.2	17.7	18.4	17.7
5	8.6	8.3	7.0	4.8	2.9	20.7	21.3	20.7	15.8	16.5	15.8
6	6.4	6.3	5.7	4.3	3.0	17.7	18.1	17.7	13.7	14.2	13.7
7	4.8	4.7	4.4	3.7	2.8	15.2	15.5	15.2	11.9	12.2	11.9
8	3.8	3.9	3.6	3.1	2.4	13.2	13.3	13.2	10.6	10.5	10.6
9	2.9	3.0	2.9	2.6	2.3	11.8	11.3	11.8	9.2	8.7	9.2

THE KIRLIN COMPANY

3401 EAST JEFFERSON AVENUE • DETROIT, MICHIGAN 48207-4232
(313) 259-6400 • Fax: (313) 259-9409 OR (313) 259-3121 • www.kirlinlighting.com

RENAISSANCE SERIES
COMPACT FLUORESCENT LIGHTING

MAXIMUM WATTAGE

1 Triple 42

CATALOG NUMBER

FRS-06096

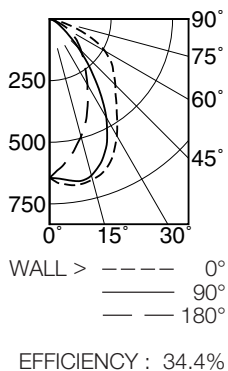
DUE TO OUR CONTINUING EFFORT TO IMPROVE PRODUCTS, TECHNICAL INFORMATION IS SUBJECT TO CHANGE WITHOUT NOTICE.

Alzak® is a registered trademark of ALCOA.

Detailed Photometry - Installed Fixture

Photometry from I.T.L., Boulder, CO

FRS-06096 (1 Triple 42)



CANDLEPOWER DISTRIBUTION					
	0.0	45.0	90.0	135.0	180.0
0	644	644	644	644	644
5	672	671	683	618	599
15	674	716	657	548	494
25	610	682	552	410	368
35	477	542	352	245	256
45	378	344	166	129	181
55	306	162	64	62	120
65	197	59	27	26	63
75	59	17	8	7	15
85	4	3	2	2	2
90	0	0	0	0	0

COEFFICIENTS OF UTILIZATION							
RF	20						
	80			50			
RC	70	50	30	10	50	30	10
1	38	37	36	35	35	34	33
2	36	33	32	30	32	30	29
3	33	30	28	26	29	27	25
4	31	27	25	23	26	24	23
5	29	25	22	20	24	22	20
6	27	23	20	18	22	20	18
7	25	21	18	17	20	18	16
8	23	19	17	15	19	17	15
9	22	18	16	14	17	15	14
10	21	17	14	13	16	14	13

ITL TEST #54893 *LER=27.8 •AEC=\$8.62

* LER = Luminaire Efficiency Rating

$$LER = \frac{\text{Luminaire Effic.} \times \text{Total Lamp Lumens} \times \text{Ballast Factor}}{\text{Input Watts}}$$

• AEC = Annual Energy Cost per 1000 lumens (based on 3000 hours use @ \$0.08 KWH).

Options

Ballast, Wattage and Voltage

- 39 Installed electronic dimming ballast. Indoor use. 10°C (50°F) minimum start. Specify wattage, voltage and brand.
- 43 Lower wattage: for either 4-pin electronic 18W triple/quad or 13W quad (only). Specify wattage.
- 97 Specify other voltage. Consult factory.
- 98 347 volt, 50/60 Hz. input. Consult factory.

Emergency Ballast - Specify Voltage¹

Internal (factory installed) ballast, test switch and indicator light. Suitable for damp locations from 0° to 50°C (32° to 122°F) or with Cold Weather version (see -CE) -20° to 55°C (-4° to 131°F).

- 73 Internal 1-lamp EM ballast. Specify voltage.
- CE Internal cold weather (-20° to 55°C) 1-lamp EM ballast. Specify voltage.
- HE¹ Internal higher lumen (up to 1250) 1-lamp EM ballast. 13-42W only. Specify voltage.

Lenses and Trims

- 30 All white lower trim. (CP x .95)
- 31 White acrylic enameled lower trim flange.
- 32 White oversize trim extender. Specify size.
- 45 Gasket between ceiling and trim flange.
- 57 SofTex Titanium lower trim. (CP x .80)
- 71 SofTex Dune lower trim. (CP x .88)
- 77 SofTex Pewter lower trim. (CP x .85)
- 90 SofTex Champagne Gold lower trim. (CP x .91)

- 91 SofTex Wheat lower trim. (CP x .87)
- 94 Custom color/finish. Specify. Consult factory.

Other

- 99 Special modification. Consult factory.
- AT Air tight with Type IC in 9-1/2" housing. Meets / exceeds ASTM E283 restricted airflow of 2 CFM maximum.
- FS Additional in-line fuse. Not available with Option -98 (347V).
- LE With 4-pin electronic lamp. 3500°K standard. 82 CRI and 12,000 hour life. Specify wattage, style and color temperature.

¹ Visit www.kirlinlighting.com for most current performance / specifications.

SUBMITTAL DATA

APPROVAL STAMP

JOB NAME

TYPE

WATTAGE

VOLTAGE

CATALOG NUMBER

LIMITED WARRANTY: CATALOGED KIRLIN FIXTURES ARE WARRANTED FREE OF DEFECTS IN WORKMANSHIP OR MATERIAL FOR THREE YEARS FROM DATE OF PURCHASE. INSTALLLED TO N.E.C. IN NORMAL USE. Manufacturer at his option will replace or repair such fixture or refund the purchase price on presentation of proof of purchase and defective fixture to the offices of manufacturer within three years of original shipment. Liability of manufacturer shall not be liable for any other damages, direct or indirect, sustained or suffered by purchaser or any person. This warranty is supplied to the buyer in place of all other warranties, expressed or implied. Seller does not warrant as to merchantability or fitness for a particular use, nor will any oral statement constitute a warranty. Abnormal use, abuse of the fixture, improper installation, repair, or modification of the fixture without prior written authorization from the manufacturer will render the warranty void.