

CATALOG #	TYPE	
JOB NAME	WATTAGE	VOLTAGE

6" x 6" 2 Triple 32 WATT MAXIMUM

FRS-06089

Open Square with Hidden Plenum Output

Features

Lamp

- Designed for two 4-pin triple tube and quad compact fluorescent lamps: 32/26W triple or 26W quad.

Ballast: Multi Wattage/Voltage

- Installed electronic high power factor, thermally protected. For lower wattages: Option -43.
- 120-277 multi-volt; 50/60 Hz. THD < 10%
- ClickQuick connectors for easy service
- Single circuit wiring or see Option -44.
- Cold weather -22°F (-30°C).
- End of lamp life protection circuit.
- Internally fused. Also see Option -F.

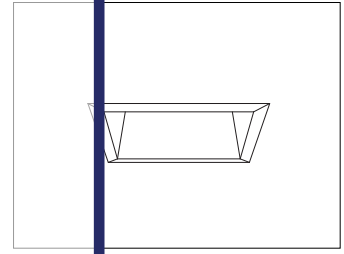
Reflectors

- Upper: Spectral Alzak® aluminum.
- Lower: Clear Softex aluminum, self flanged.
- See Options for other finishes.

THIS PRODUCT IS NO LONGER AVAILABLE

Please consult QUOTATIONS

for the best alternative.



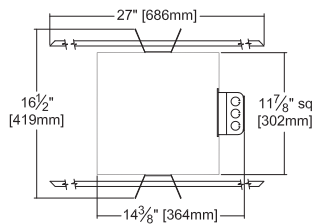
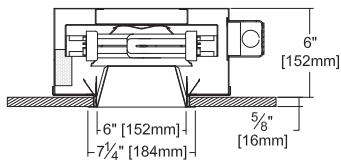
Recessed Square
Open
Dual Reflector
Shallow Plenum

Selected Optional Trims:

- All White Option -30
- Softex Titanium Option -57
- Softex Dune Option -71
- Softex Pewter Option -77
- Softex Wheat Option -91

Performance at a Glance

FRS-06089

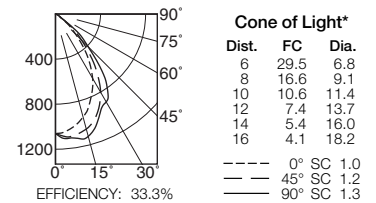


Ceiling Cut-out
6 3/4" Sq.

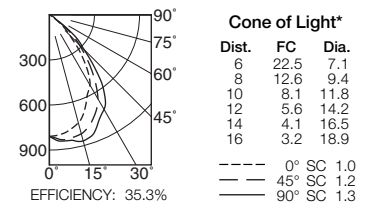
Cone of Light Key

- Ft. Distance from fixture
- FC Footcandles (average)
- Dia. Circle of light at 50% of FC
- * Dia. (in ft.) shown is where FC value is half the FC at nadir.

FRS-06089 (2 Triple 32W)



FRS-06089 (2 Triple 26W)



THE KIRLIN COMPANY

3401 EAST JEFFERSON AVENUE • DETROIT, MICHIGAN 48207-4232
(313) 259-6400 • Fax: (313) 259-9409 OR (313) 259-3121 • www.kirlinlighting.com

**RENAISSANCE SERIES
COMPACT FLUORESCENT LIGHTING**

MAXIMUM WATTAGE

2 Triple 32

CATALOG NUMBER

FRS-06089

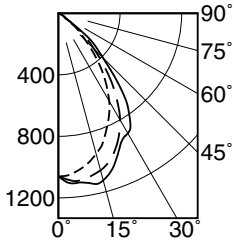
DUE TO OUR CONTINUING EFFORT TO IMPROVE PRODUCTS, TECHNICAL INFORMATION IS SUBJECT TO CHANGE WITHOUT NOTICE.

Alzak® is a registered trademark of ALCOA.

Detailed Photometry - Installed Fixture

Photometry from I.T.L., Boulder, CO

FRS-06089 (2 Triple 32)



----- 0° SC 1.0
 - - - - 45° SC 1.2
 _____ 90° SC 1.3

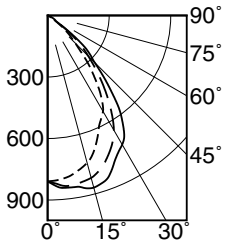
EFFICIENCY : 33.3%

CANDLEPOWER DISTRIBUTION					
	0.0	22.5	45.0	67.5	90.0
0	1061	1061	1061	1061	1061
5	1045	1065	1094	1106	1110
15	946	1016	1057	1107	1124
25	767	855	914	952	949
35	528	602	648	764	801
45	253	269	326	386	409
55	61	65	74	93	76
65	22	21	17	22	25
75	5	6	6	6	5
85	2	1	1	2	1
90	0	0	0	0	0

COEFFICIENTS OF UTILIZATION							
RF	20						
	RC	80			50		
		RW	70	50	30	10	50
1	37	36	35	35	34	34	33
2	35	33	32	30	32	30	29
3	33	30	29	27	29	28	26
4	31	28	26	24	27	25	24
5	29	26	23	22	25	23	21
6	27	24	21	20	23	21	20
7	26	22	20	18	21	19	18
8	24	20	18	16	20	18	16
9	23	19	17	15	18	16	15
10	21	18	15	14	17	15	14

ITL TEST #54886 *LER=19.9 •AEC=\$12.08

FRS-06089 (2 Triple 26)



----- 0° SC 1.0
 - - - - 45° SC 1.2
 _____ 90° SC 1.3

EFFICIENCY : 35.3%

CANDLEPOWER DISTRIBUTION					
	0.0	22.5	45.0	67.5	90.0
0	809	809	809	809	809
5	800	812	833	841	844
15	744	789	820	855	869
25	594	655	723	770	778
35	436	486	525	602	637
45	190	212	281	320	324
55	47	49	61	77	66
65	19	18	16	19	23
75	5	4	4	4	4
85	2	1	0	1	1
90	0	0	0	0	0

COEFFICIENTS OF UTILIZATION							
RF	20						
	RC	80			50		
		RW	70	50	30	10	50
1	40	39	38	37	36	36	35
2	37	35	34	32	33	32	31
3	35	32	30	29	31	29	28
4	33	30	27	26	28	27	25
5	31	27	25	23	26	24	23
6	29	25	23	21	24	22	21
7	27	23	21	19	22	20	19
8	25	21	19	17	21	19	17
9	24	20	18	16	19	17	16
10	23	19	16	15	18	16	15

ITL TEST #54887 *LER=21.5 •AEC=\$11.16

* LER = Luminaire Efficiency Rating
 LER = Luminaire Effic. x Total Lamp Lumens x Ballast Factor
 Input Watts

• AEC = Annual Energy Cost per
 1000 lumens (based on 3000
 hours use @ \$0.08 KWH).

LIMITED WARRANTY: CATALOGUED KIRLIN FIXTURES ARE WARRANTED FREE OF DEFECTS IN WORKMANSHIP OR MATERIAL FOR THREE YEARS FROM DATE OF PURCHASE. INSTALLLED TO N.E.C. IN NORMAL USE. Manufacturer at his option will replace or repair such fixture or refund the purchase price on presentation of proof of defective fixture at the offices of manufacturer within three years of original shipment. Liability of manufacturer is limited to the foregoing, and manufacturer shall not be liable for any other damages, direct or indirect, sustained or suffered by purchaser or any person. This warranty is subject to the buyer in place of all other warranties, expressed or implied. Seller does not warrant as to merchantability or fitness for a particular use, nor will any oral statement constitute a warranty or amend this specific warranty. Abnormal use, abuse of the fixture, improper installation, repair, or modification of the fixture without prior written authorization from the manufacturer will render the warranty void.

Options

Ballast, Wattage and Voltage

- 39 Installed electronic dimming ballast. Indoor use. 10°C (50°F) minimum start. Specify wattage, voltage and brand.
- 43 Lower wattage: for either 4-pin electronic 2x18W triple/quad or 2x13W quad (only). Specify wattage.
- 84 Wired for two circuits. Also see -FD.
- 97 Specify other voltage. Consult factory.
- 98 347 volt, 50/60 Hz. input. Consult factory.

Emergency Ballast - Specify Voltage¹

Internal (factory installed) ballast, test switch and indicator light. Suitable for damp locations from 0° to 50°C (32° to 122°F) or with Cold Weather version (see -CE) -20° to 55°C (-4° to 131°F).

- 73 Internal 1-lamp EM ballast. Specify voltage.
- CE Internal cold weather (-20° to 55°C) 1-lamp EM ballast. Specify voltage.
- HE¹ Internal higher lumen (up to 1250) 1-lamp EM ballast. 13-42W only. Specify voltage.

Trims

- 30 All white lower trim. (CP x .95)
- 31 White acrylic enameled lower trim flange.
- 32 White oversize trim extender. Specify size.
- 45 Gasket between ceiling and trim flange.
- 57 SofTex Titanium lower trim. (CP x .80)
- 71 SofTex Dune lower trim. (CP x .88)
- 77 SofTex Pewter lower trim. (CP x .85)
- 79 Extension collar for ceilings up to 2" thick.
- 90 SofTex Champagne Gold lower trim. (CP x .91)
- 91 SofTex Wheat lower trim. (CP x .87)

- 94 Custom color/finish. Specify. Consult factory.

ShatterGuard™ Shield (Beneath Lamp)

- 17 .187" prismatic high strength acrylic .
- ML MicroLux tempered microprismatic lens.
- SG .125" clear polycarbonate.

Other

- 99 Special modification. Consult factory.
- FD Two additional in-line fuses. One per ballast. Use with Option -84. Not available with Option -98 (347V).
- FS Additional in-line fuse. Not available with Option -98 (347V).
- LE With 4-pin electronic lamp. 3500°K standard. 82 CRI and 12,000 hour life. Specify wattage, style and color temperature.

¹ Visit www.kirlinlighting.com for most current performance / specifications.

SUBMITTAL DATA

JOB NAME

TYPE

WATTAGE

VOLTAGE

CATALOG NUMBER

APPROVAL STAMP