

CATALOG #	TYPE	
JOB NAME	WATTAGE	VOLTAGE

6" x 6" 1 Triple 42 WATT MAXIMUM

FRS-06088

Shallow Plenum Open Square
Air Tight and Type 30 Option

THIS PRODUCT IS NO LONGER

AVAILABLE

Please consult QUOTATIONS

for the best alternative.

Features

Lamp

- Designed for one 4-pin triple tube amorphous quad compact fluorescent lamp: 42/32/26W triple or 26W quad.

Ballast: Multi Wattage/Voltage

- Installed electronic high power factor, thermally protected. For lower wattages: Option -43.
- 120-277 multi-volt; 50/60 Hz. THD < 10%.
- ClickQuick connectors for easy service.
- Cold weather -22°F (-30°C).
- End of lamp life protection circuit. Filament pre-heat.
- Internally fused. Also see Option -FS.

Reflectors

- Upper: Specular Alzak® aluminum.
- Lower: Clear Softex aluminum.
- See Options for other finishes.

Aluminum Housing

- Acrylic enamel. Meets UL Type 1000.
- 1-hour ASTM 9% salt spray test.

- Lightweight: Minimizes ceiling load.
- Optional operation. Extra response time.
- Energy luminaire service through a fixture.
- Blow-out plastic cover.
- Outlet box
- Prewired 14 GA (NEC) galvanized steel, UL listed. 1/2" and 3/4" knockouts.

Installation

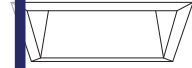
- 27" galvanized hanger bars with adjustable mounting brackets (2) supplied.
- Stresses indoor or outdoor use in various locations.

UL Listing

- UL Listed for use in dry locations only.
- UL Classified for use in dry locations only with insulation. See Option -AT.
- Through-branch conductors (6 #12).

Three Year Limited Warranty

- Includes standard fixture and ballast.

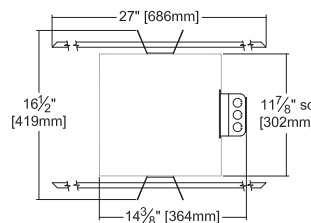
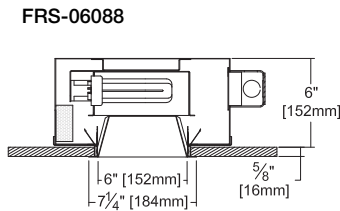


Recessed Square
Open
Dual Reflector
Shallow Plenum

Selected Optional Trims:

- All White Option -30
- Softex Titanium Option -57
- Softex Dune Option -71
- Softex Pewter Option -77
- Softex Wheat Option -91

Performance at a Glance

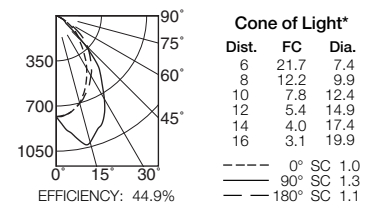


Ceiling Cut-out
6 3/4" Sq.

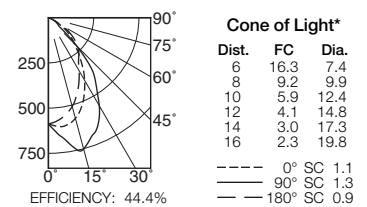
Cone of Light Key

- Ft. Distance from fixture
- FC Footcandles (average)
- Dia. Circle of light at 50% of FC
- * Dia. (in ft.) shown is where FC value is half the FC at nadir.

FRS-06088 (1 Triple 42W)



FRS-06088 (1 Triple 32W)



THE KIRLIN COMPANY

3401 EAST JEFFERSON AVENUE • DETROIT, MICHIGAN 48207-4232
(313) 259-6400 • Fax: (313) 259-9409 OR (313) 259-3121 • www.kirlinlighting.com

RENAISSANCE SERIES
COMPACT FLUORESCENT LIGHTING

MAXIMUM WATTAGE

1 Triple 42

CATALOG NUMBER

FRS-06088

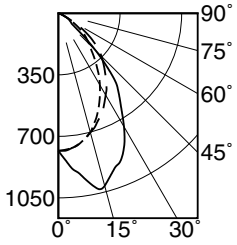
DUE TO OUR CONTINUING EFFORT TO IMPROVE PRODUCTS, TECHNICAL INFORMATION IS SUBJECT TO CHANGE WITHOUT NOTICE.

Alzak® is a registered trademark of ALCOA.

Detailed Photometry - Installed Fixture

Photometry from I.T.L., Boulder, CO

FRS-06088 (1 Triple 42)



----- 0° SC 1.0
 _____ 90° SC 1.3
 - - - - - 180° SC 1.1

EFFICIENCY : 44.9%

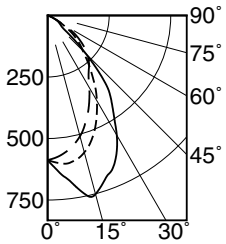
CANDLEPOWER DISTRIBUTION					
	0.0	45.0	90.0	135.0	180.0
0	782	782	782	782	782
5	772	844	886	848	774
15	701	907	1016	932	701
25	552	774	871	823	601
35	386	552	612	632	473
45	246	279	299	379	346
55	138	76	85	115	191
65	42	25	37	28	39
75	9	8	7	7	9
85	0	2	1	1	1
90	0	0	0	0	0

COEFFICIENTS OF UTILIZATION							
RF	20						
	80				50		
	RW	70	50	30	10	50	30
1	50	49	48	46	46	45	44
2	47	44	42	40	42	40	39
3	44	41	38	36	39	36	35
4	41	37	34	32	35	33	31
5	38	34	31	28	33	30	28
6	36	31	28	26	30	27	25
7	34	29	25	23	28	25	23
8	32	27	23	21	26	23	21
9	30	25	22	19	24	21	19
10	28	23	20	18	22	20	18

ITL TEST #54885 *LER=33.1 •AEC=\$7.26

* LER = Luminaire Efficiency Rating
 LER = Luminaire Effic. x Total Lamp Lumens x Ballast Factor
 Input Watts

FRS-06088 (1 Triple 32)



----- 0° SC 1.1
 _____ 90° SC 1.3
 - - - - - 180° SC 0.9

EFFICIENCY : 44.4%

CANDLEPOWER DISTRIBUTION					
	0.0	45.0	90.0	135.0	180.0
0	588	588	588	588	588
5	603	641	649	619	572
15	576	733	752	663	508
25	468	652	650	576	398
35	328	478	461	422	290
45	202	244	220	217	228
55	112	62	62	64	142
65	33	19	28	19	30
75	6	6	5	5	6
85	1	1	1	1	1
90	0	0	0	0	0

COEFFICIENTS OF UTILIZATION							
RF	20						
	80				50		
	RW	70	50	30	10	50	30
1	50	48	47	46	46	45	44
2	47	44	42	40	42	40	39
3	44	40	37	35	38	36	34
4	41	37	34	31	35	33	31
5	38	34	31	28	32	30	28
6	36	31	28	25	30	27	25
7	34	29	25	23	28	25	23
8	31	26	23	21	26	23	21
9	30	25	21	19	24	21	19
10	28	23	20	18	22	20	18

ITL TEST #55295 *LER=28.5 •AEC=\$8.41

* AEC = Annual Energy Cost per
 1000 lumens (based on 3000
 hours use @ \$0.08 KWH).

LIMITED WARRANTY: CATALOGED KIRLIN FIXTURES ARE WARRANTED FREE OF DEFECTS IN WORKMANSHIP OR MATERIAL FOR THREE YEARS FROM DATE OF PURCHASE. INSTALLLED TO N.E.C. IN NORMAL USE. Manufacturer at his option will replace or repair such fixture or refund the purchase price on presentation of proof of defective fixture at the offices of manufacturer within three years of original shipment. Liability of manufacturer is limited to the foregoing, and manufacturer shall not be liable for any other damages, direct or indirect, sustained or suffered by purchaser or any person. This warranty is supplied to the buyer in place of all other warranties, expressed or implied. Seller does not warrant as to merchantability or fitness for a particular use, nor will any oral statement constitute a warranty or amend this specific warranty. Abnormal use, abuse of the fixture, improper installation, repair, or modification of the fixture without prior written authorization from the manufacturer will render the warranty void.

Options

Ballast, Wattage and Voltage

- 39 Installed electronic dimming ballast. Indoor use. 10°C (50°F) minimum start. Specify wattage, voltage and brand.
- 43 Lower wattage: for either 4-pin electronic 18W triple/quad or 13W quad (only). Specify wattage.
- 97 Specify other voltage. Consult factory.
- 98 347 volt, 50/60 Hz. input. Consult factory.

Emergency Ballast - Specify Voltage¹

- Internal (factory installed) ballast, test switch and indicator light. Suitable for damp locations from 0° to 50°C (32° to 122°F) or with Cold Weather version (see -CE) -20° to 55°C (-4° to 131°F).
- 73 Internal 1-lamp EM ballast. Specify voltage.

- CE Internal cold weather (-20° to 55°C) 1-lamp EM ballast. Specify voltage.
- HE¹ Internal higher lumen (up to 1250) 1-lamp EM ballast. 13-42W only. Specify voltage.

Trims

- 30 All white lower trim. (CP x .95)
- 31 White acrylic enameled lower trim flange.
- 32 White oversize trim extender. Specify size.
- 45 Gasket between ceiling and trim flange.
- 57 SofTex Titanium lower trim. (CP x .80)
- 71 SofTex Dune lower trim. (CP x .88)
- 77 SofTex Pewter lower trim. (CP x .85)
- 79 Extension collar for ceilings up to 2" thick.
- 90 SofTex Champagne Gold lower trim. (CP x .91)
- 91 SofTex Wheat lower trim. (CP x .87)

- 94 Custom color/finish. Specify. Consult factory.

ShatterGuard™ Shield (Beneath Lamp)

- 17 .187" prismatic high strength acrylic.
- ML MicroLux tempered microprismatic lens.
- SG .125" clear polycarbonate.

Other

- 99 Special modification. Consult factory.
- AT Air tight with Type IC in 9-1/2" housing. Meets / exceeds ASTM E283 restricted airflow of 2 CFM maximum.
- FS Additional in-line fuse. Not available with Option -98 (347V).
- LE With 4-pin electronic lamp. 3500°K standard. 82 CRI and 12,000 hour life. Specify wattage, style and color temperature.

¹ Visit www.kirlinlighting.com for most current performance / specifications.

SUBMITTAL DATA

APPROVAL STAMP

JOB NAME

TYPE

WATTAGE

VOLTAGE

CATALOG NUMBER