

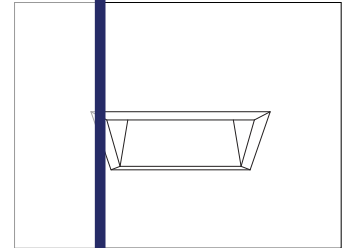
CATALOG #	TYPE	
JOB NAME	WATTAGE	VOLTAGE

6" x 6" 1 Triple 42 WATT MAXIMUM

FRS-06086

Square Type IC Open Dual Reflector
Air Tight Optional

THIS PRODUCT IS NO LONGER AVAILABLE



Features

Lamp

- Designed for one 4-pin triple tube compact fluorescent lamp: 42/32/26W triple or 26W quad.

Ballast: Multi Wattage/Voltage

- Installed electronic high power factor, thermally protected. For lower wattages: Option -43.
- 120-277 multi-volt; 50/60 Hz. THD < 10%.
- ClickQuick connectors for easy service.
- Cold weather -22°F (-30°C).
- End of lamp life protection circuit. Filament life protection circuit. Also see Option -FS.

Reflectors

- Upper: Spectular Alzak® aluminum.
- Lower: Clear SofTex aluminum, or anodized.
- See Options for other finishes.

Aluminum Housing

- Acrylic enamel. Exceeds 1000 hour ASTM 9% salt spray test.

- Lightweight: Minimizes ceiling load.
- Cool operation. Extends component life.
- Ensure luminaire service through aperture.
- Blow-through design.
- Air Tight design. See Option -AT.

Outlet Box

- Prewired 14 GA (NEC) galvanized steel, UL listed.
- 1/2" and 3/4" knockouts.

Installation

- 72" aluminum rods (sold separately) for mounting (see page 2) for ceiling.
- Recesses indoor or outdoor in covered locations.
- UL -UL (indoor) is 19.
- Volt, for dry locations only.
- 72" approved for direct contact with insulation.
- Through-branch conductors (6 #12).

Please consult **QUOTATIONS** for the best alternative.

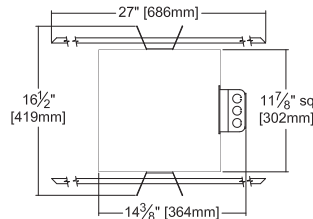
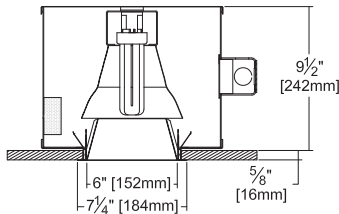
Recessed Square
Open
Dual Reflector
Type IC

Selected Optional Trims:

- All White Option -30
- SoTex Titanium Option -57
- SoTex Dune Option -71
- SoTex Pewter Option -77
- SoTex Wheat Option -91

Performance at a Glance

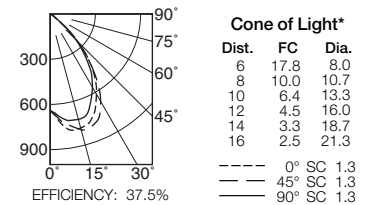
FRS-06086



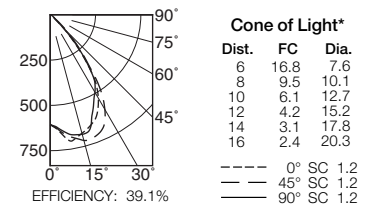
Ceiling Cut-out
6 3/4" Sq.

- Cone of Light Key**
- Ft. Distance from fixture
 - FC Footcandles (average)
 - Dia. Circle of light at 50% of FC
 - * Dia. (in ft.) shown is where FC value is half the FC at nadir.

FRS-06086 (1 Triple 42W)



FRS-06086 (1 Triple 32W)



THE KIRLIN COMPANY

3401 EAST JEFFERSON AVENUE • DETROIT, MICHIGAN 48207-4232
(313) 259-6400 • Fax: (313) 259-9409 OR (313) 259-3121 • www.kirlinlighting.com

RENAISSANCE SERIES
COMPACT FLUORESCENT LIGHTING

MAXIMUM WATTAGE

1 Triple 42

CATALOG NUMBER

FRS-06086

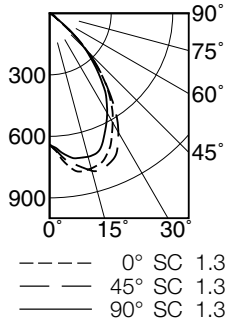
DUE TO OUR CONTINUING EFFORT TO IMPROVE PRODUCTS, TECHNICAL INFORMATION IS SUBJECT TO CHANGE WITHOUT NOTICE.

Alzak® is a registered trademark of ALCOA.

Detailed Photometry - Installed Fixture

Photometry from I.T.L., Boulder, CO

FRS-06086 (1 Triple 42)



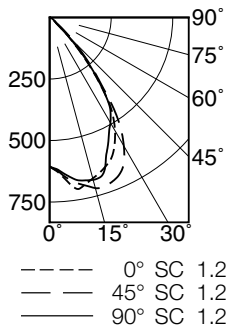
EFFICIENCY : 37.5%

CANDLEPOWER DISTRIBUTION					
	0.0	22.5	45.0	67.5	90.0
0	641	641	641	641	641
5	718	707	702	684	682
15	783	790	795	737	724
25	705	728	763	673	638
35	518	545	544	526	476
45	256	283	265	279	245
55	37	34	31	36	36
65	15	14	8	12	14
75	2	2	2	2	2
85	0	0	0	0	0
90	0	0	0	0	0

COEFFICIENTS OF UTILIZATION							
RF	20						
	80			50			
	RW	70	50	30	10	50	30
1	42	41	40	39	39	38	37
2	40	38	36	34	36	34	33
3	37	34	32	31	33	31	30
4	35	32	29	27	30	28	27
5	33	29	27	25	28	26	24
6	31	27	24	22	26	24	22
7	29	25	22	20	24	22	20
8	27	23	20	19	22	20	18
9	26	21	19	17	21	19	17
10	24	20	17	16	19	17	16

ITL TEST #55408 *LER=29.5 •AEC=\$8.13

FRS-06086 (1 Triple 32)



EFFICIENCY : 39.1%

CANDLEPOWER DISTRIBUTION					
	0.0	22.5	45.0	67.5	90.0
0	606	606	606	606	606
5	653	648	645	633	635
15	677	695	718	680	683
25	609	622	689	574	563
35	417	443	457	430	411
45	101	131	141	136	104
55	25	21	15	21	23
65	11	9	7	9	11
75	2	2	2	2	2
85	0	0	0	0	0
90	0	0	0	0	0

COEFFICIENTS OF UTILIZATION							
RF	20						
	80			50			
	RW	70	50	30	10	50	30
1	44	43	42	41	41	40	39
2	42	40	38	36	38	36	35
3	39	37	34	33	35	33	32
4	37	34	31	30	32	30	29
5	35	31	29	27	30	28	26
6	33	29	26	25	28	26	24
7	31	27	24	23	26	24	22
8	29	25	23	21	24	22	21
9	28	23	21	19	23	21	19
10	26	22	20	18	21	19	18

ITL TEST #55409 *LER=25.9 •AEC=\$9.26

* LER = Luminaire Efficiency Rating
LER = Luminaire Effic. x Total Lamp Lumens x Ballast Factor
Input Watts

• AEC = Annual Energy Cost per
1000 lumens (based on 3000
hours use @ \$0.08 KWH).

Options

Ballast, Wattage and Voltage

- 39 Installed electronic dimming ballast. Not Type IC listed. Indoor use. 10°C (50°F) minimum start. Specify wattage, voltage and brand.
- 43 Lower wattage: for either 4-pin electronic 18W triple/quad or 13W quad (only). Specify wattage.
- 97 Specify other voltage. Consult factory.
- 98 347 volt, 50/60 Hz. input. Consult factory.

Emergency Ballast - Specify Voltage¹

Internal (factory installed) ballast, test switch and indicator light. Suitable for damp locations from 0° to 50°C (32° to 122°F) or with Cold Weather version (see -CE) -20° to 55°C (-4° to 131°F).

- 73 Internal 1-lamp EM ballast. Specify voltage.
- CE Internal cold weather (-20° to 55°C) 1-lamp EM ballast. Specify voltage.
- HE¹ Internal higher lumen (up to 1250) 1-lamp EM ballast. 13-42W only. Specify voltage.

Trims

- 30 All white lower trim. (CP x .95)
- 31 White acrylic enameled lower trim flange.
- 32 White oversize trim extender. Specify size.
- 45 Gasket between ceiling and trim flange.
- 57 SofTex Titanium lower trim. (CP x .80)
- 71 SofTex Dune lower trim. (CP x .88)
- 77 SofTex Pewter lower trim. (CP x .85)
- 79 Extension collar for ceilings up to 2" thick.
- 90 SofTex Champagne Gold lower trim. (CP x .91)

- 91 SofTex Wheat lower trim. (CP x .87)
- 94 Custom color/finish. Specify. Consult factory.

Top Access

- TA Top access for servicing from above.

Other

- 99 Special modification. Consult factory.
- AT Air tight with Type IC. Meets / exceeds ASTM E283 restricted airflow of 2CFM maximum.
- FS Additional in-line fuse. Not available with Option -98 (347V).
- LE With 4-pin electronic lamp. 3500°K standard. 82 CRI and 12,000 hour life. Specify wattage, style and color temperature.

¹ Visit www.kirlinlighting.com for most current performance / specifications.

SUBMITTAL DATA

APPROVAL STAMP

JOB NAME

TYPE

WATTAGE

VOLTAGE

CATALOG NUMBER

LIMITED WARRANTY: CATALOGED KIRLIN FIXTURES ARE WARRANTED FREE OF DEFECTS IN WORKMANSHIP OR MATERIAL FOR THREE YEARS FROM DATE OF PURCHASE. INSTALLLED TO N.E.C. IN NORMAL USE. Manufacturer at his option will replace or repair such fixture or refund the purchase price on presentation of proof of purchase and defective fixture at the offices of manufacturer within three years of original shipment. Liability of manufacturer is limited to the foregoing, and manufacturer shall not be liable for any other damages, direct or indirect, sustained or suffered by purchaser or any person. This warranty is supplied to the buyer in place of all other warranties, expressed or implied. Seller does not warrant as to merchantability or fitness for a particular use, nor will any oral statement constitute a warranty or amend this specific warranty. Abnormal use, abuse of the fixture, improper installation, or modification of the fixture without prior written authorization from the manufacturer will render the warranty void.