

CATALOG #	TYPE	
JOB NAME	WATTAGE	VOLTAGE

SmartLED™ MRI Lighting System

6" Regress White Trim Lensed Downlight

Up to 60,000 Hour Life • LM-80 Qualified
LM-79 Certified Photometry

Specifications

Delivered System Performance

- Nominal Lumens: **Must Specify**

Type IC	Non-IC
-2500L	-5000L
	-4000L

- Distribution: MFL standard; optional: -SPT, -NFL, or -WFL
- Color temperature: 3500°K standard; optional: -27K, -30K, -41K, or -50K
- CRI: 80+ standard; optional: -HC (90+)
- 60,000 hour life (L70)
- Fully sustainable: removable for servicing

Thermal Management System

- Aluminum heat sink and components for cool operation, long life, and low maintenance

SmartLED™ MRI Lighting System Required

- Kirlin remote driver modules, cabinet, and RFI filters required for operation
- Components ordered separately, see below for driver information and [MRI-CABNT](#) for additional components
- The [MRI Configurator](#) can help determine the necessary components
- SmartLED driver modules provide 0-10V dimming to 0.38%

SmartLED™ Emergency Backup System

- [EMI-21220](#) or [EMI-03120](#) available for emergency power
- See specification sheet; order separately

Trim and Lens Assembly

- White finished (field paintable) aluminum self-flanged trim
- Regressed tempered prismatic spread lens

Acrylic Enameled Aluminum Housing

- Rustproof and corrosion resistant: exceeds 1000 hour ASTM 5% salt spray test; all components fully sustainable
- Shallow depth for restricted plenums
- Cool operation extends component life
- Modular design; visible and fully serviceable through aperture
- Built-in plaster flange

Outlet Box (Aluminum)

- UL listed J-box; prewired with 1/2" knockouts

Installation & Hardware

- Requires minimum 18 AWG twisted pair shielded wire from SmartLED™ MRI Lighting System to fixtures
- Recesses in ceilings up to 1-1/8" thick or see Option -79
- Aluminum 27" hanger bars with adjustable mounting brackets (2) supplied.

UL, C-UL (Canada) Listings

- Wet, damp or dry locations, covered ceilings
- Type IC (-2500L only): for direct contact with insulation

IEC & FCC Compliance

- FCC Part 15 certified for EMI/RFI emissions

MRR-06427

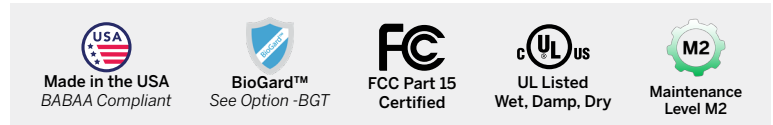


FIVE YEAR Limited Warranty

- Complete fixture, must be installed with all SmartLED™ components

Maintenance and Future-Proofing

- M2 maintenance level standard- non-ferromagnetic phillips head screwdriver, and/or a basic wrench needed
- Lighthouse, driver replaceable through the aperture of the fixture with quick-connections, no soldering required
- Backed by Kirlin's [25-Year Legacy Support Guarantee](#)



Available Maintenance Levels

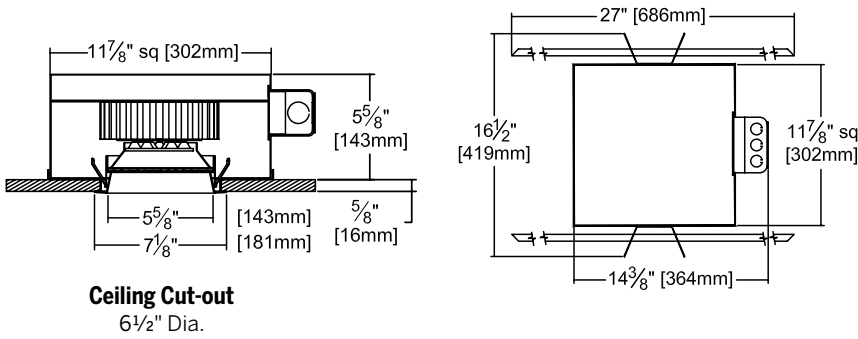
Level	Option	Tools Required to Service LED Module and Driver
	MRI	<ul style="list-style-type: none"> ⊗ Non-ferromagnetic phillips head screwdriver, and/or a basic wrench needed

Options and Ordering Configuration

(Example: MRR-06427-2500L-30K-NFL)

Must Specify		Optional			
Model	Lumens	CCT & CRI	Beam	Trim & Lens Options	Other Options
MRR-06427					
	Non-IC	(Blank): 35K, 80+ CRI	(Blank): MFL	(Blank): White self-flanged downlight cone with lens above	(Blank): None
	-5000L				
	-4000L	80+ CRI	-NFL	Trim Finishes	Mounting
	Type IC	-27K: 2700°K	-MFL	-BGT: BioGard anti-microbial white	-79: Extension collar; ceilings up to 2" thick
	-2500L	-30K: 3000°K	-WFL	-BKBG: BioGard anti-microbial black	Other Options
		-35K: 3500°K		-94: Custom color; consult factory	-99: Special modification; consult factory
		-41K: 4000°K		-94BG: BioGard anti-microbial custom color finish	
		-50K: 5000°K		Other Trim Features	
		90+ CRI		-32: White trim extender, specify OD	
		-27K-HC: 2700°K		-45: Gasket between trim flange and ceiling	
		-30K-HC: 3000°K		-46: Gasket between trim and lens	
		-35K-HC: 3500°K		Lens Options	
		-41K-HC: 4000°K		-WA: White acrylic (flat) diffuser instead; will produce wide flood distribution	
		-50K-HC: 5000°K			

Dimensions



Performance Factors

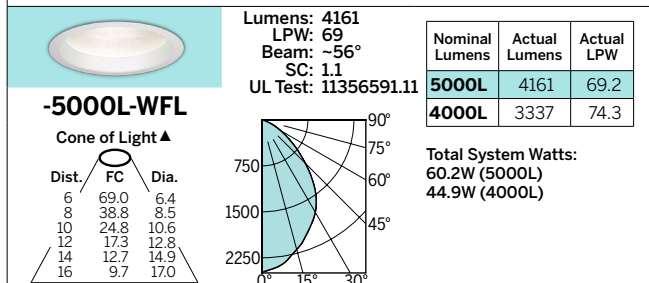
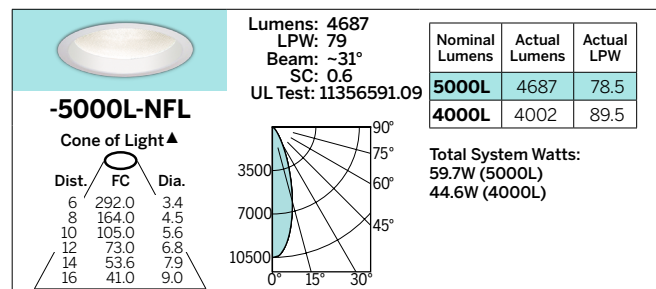
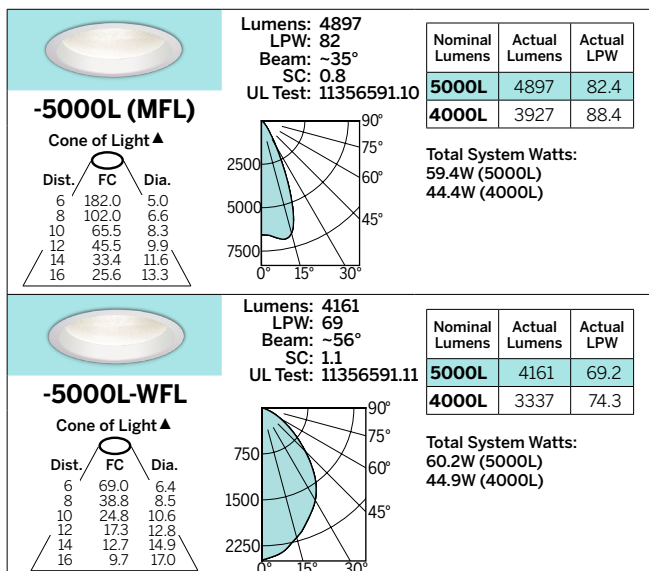
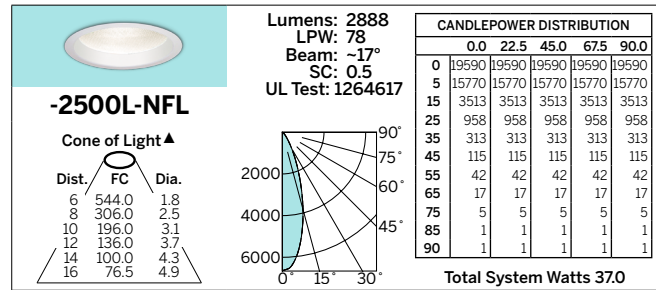
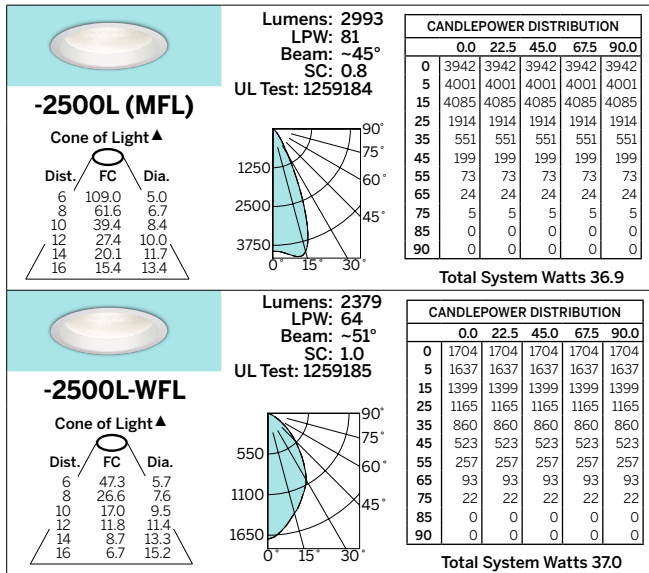
NOMINAL LUMENS	LUMEN FACTOR	NOMINAL WATTS	LPW FACTOR
-5000L	1.00	59.4	1.00
-4000L	0.80	44.4	1.14
-2500L	0.61	36.9	0.99

Photometry - Installed Complete Fixture

LM-79 IES Certified Photometry from Independent Lab

Photometry from UL Verification Services, Allentown, PA

▲ Cone of Light Key
Dia. (in ft.) shown is where FC value is half the FC at nadir.
Dist. Distance (Ft.) from fixture
FC Footcandles at nadir (0°)
Dia. Circle of light at 50% of FC



*LED manufacturers maintain a tolerance of +/-7% on flux (lumens) and power (electrical) measurements.

LIMITED WARRANTY: KIRLIN EXCEPT AS SPECIFIED IN THE WARRANTY DOCUMENTS, ALL OTHERS ARE DISCLAIMED. THE PURCHASE PRICE DOES NOT REPRESENT A GUARANTEE OF PERFORMANCE. THE MANUFACTURER'S WARRANTY IS LIMITED TO THE ORIGINAL PURCHASER AND IS VOID IF THE PRODUCT IS NOT INSTALLED OR USED IN ACCORDANCE WITH THE INSTALLATION AND OPERATION INSTRUCTIONS. THE WARRANTY IS VOID IF THE PRODUCT IS NOT INSTALLED OR USED IN ACCORDANCE WITH THE INSTALLATION AND OPERATION INSTRUCTIONS. THE WARRANTY IS VOID IF THE PRODUCT IS NOT INSTALLED OR USED IN ACCORDANCE WITH THE INSTALLATION AND OPERATION INSTRUCTIONS.

SmartLED™ MRI Driver Modules

Fully Digital Controlled Power Source for LED Luminaires

Mounted in Kirlin's **MRI-CABNT**

Drivers wired in series



Lumens	Driver Module	Maximum Capacity	Fixture Load Examples
-2500L	DVR-1400A	Qty 1: 2500L Luminaires	• Qty 1: MRR-06427-2500L
	DVR-1400B	Up to Qty 2: 2500L Luminaires	• Qty 1: MRR-06427-2500L • Qty 2: MRR-06427-2500L • Qty 1: MRR-06427-2500L and Qty 1: MRR-06427-2500L
-4000L	DVR-1050A	Qty 1: 4000L Luminaires	• Qty 1: MRR-06427-4000L
	DVR-1050C*	Qty 2: 4000L Luminaires, 1 per LED output	• Qty 2: MRR-06427-2500L • Qty 1: MRR-06427-4000L and Qty 1: MRR-06427-4000L
-5000L	DVR-1400B	Qty 1: 5000L Luminaires	• Qty 1: MRR-06427-5000L

* 100W DVR-XXXXC driver modules have 2 LED outputs each.

LIMITED WARRANTY: CATALOGED KIRLIN FIXTURES ARE WARRANTED FREE OF DEFECTS IN WORKMANSHIP OR MATERIAL FOR FIVE YEARS FROM DATE OF PURCHASE. INSTALLED TO N.E.C., IN NORMAL USE. Manufacturer at his option will replace or repair, such fixture or refund the purchase price on presentation of proof of purchase and defective fixture at the office of manufacturer within five years of original shipment. Liability of manufacturer is limited to the foregoing, and manufacturer shall not be liable for any other damages, direct or indirect, sustained or suffered by purchaser or any person. This warranty is void where prohibited. Seller does not warrant as to merchantability or fitness for a particular use, nor will any oral statement or written authorization from the manufacturer will render the warranty void.