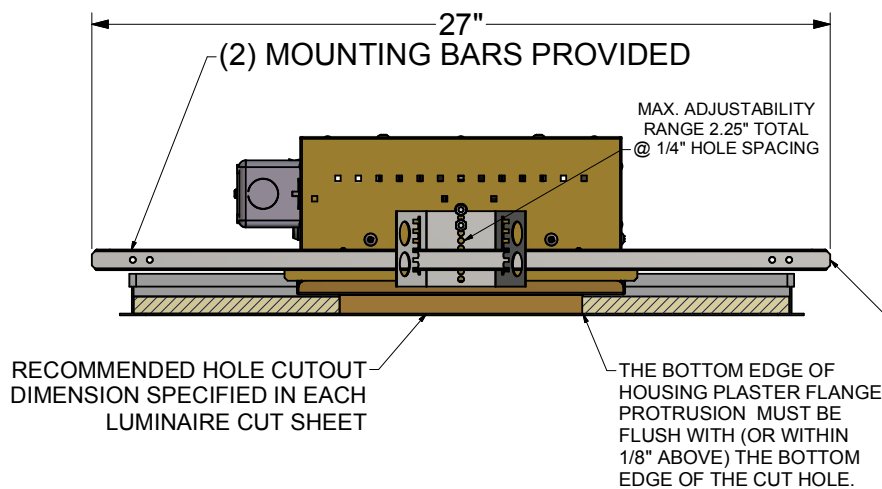


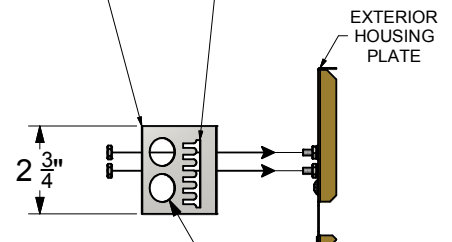
STANDARD MOUNTING HARDWARE INSTALLATION INSTRUCTIONS

(2) 27" MOUNTING BARS & (2) WING BRACKETS WITH COMBINED VERTICAL ADJUSTABILITY OF 4.0"



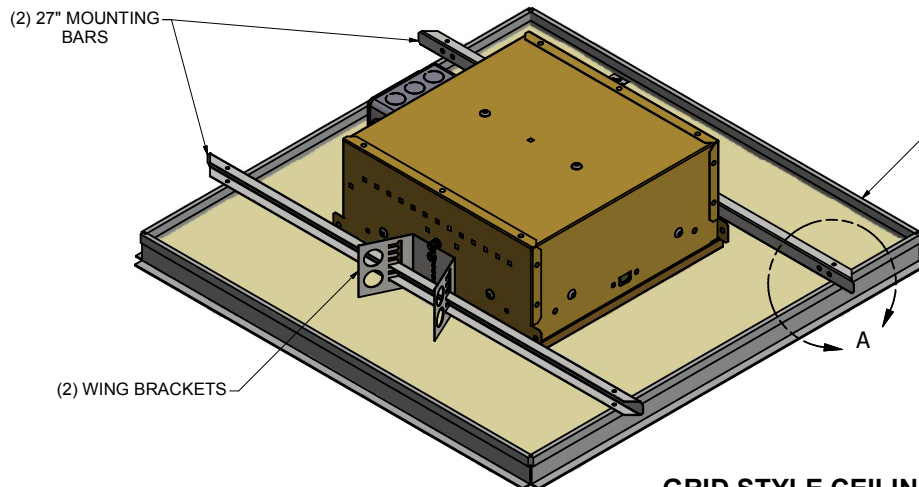
ADJUSTABLE
WING MOUNTING
BRACKET

ALSO ACCEPTS
1/2"x1/2"x1/2"
LATHING CHANNEL

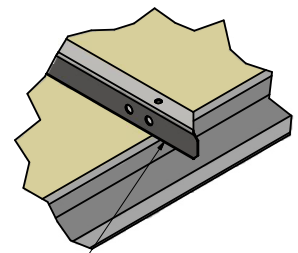


FOR 1/2" TRADE
SIZE CONDUIT

TYPICAL COMMERCIAL INSTALLATIONS



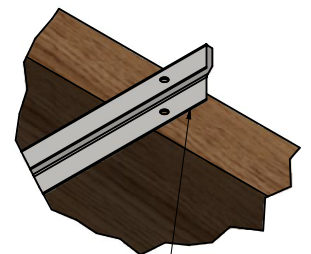
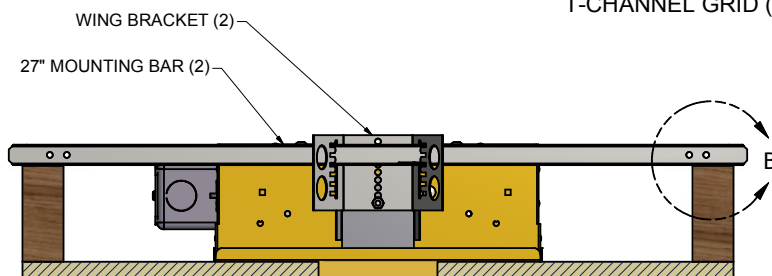
DETAIL A



GRID STYLE CEILING INSTALLATION

BE SURE TO ADJUST VERTICAL POSITION OF MOUNTING BARS WITHIN THE BRACKET SO THAT THEY REST ON ADJACENT T-CANNEL GRID (SECURE TO GRID AS REQUIRED)

DETAIL B



HOUSING PLASTER FLANGE
PROTRUSION. ALIGN WITH
BOTTOM OF CEILING MATERIAL

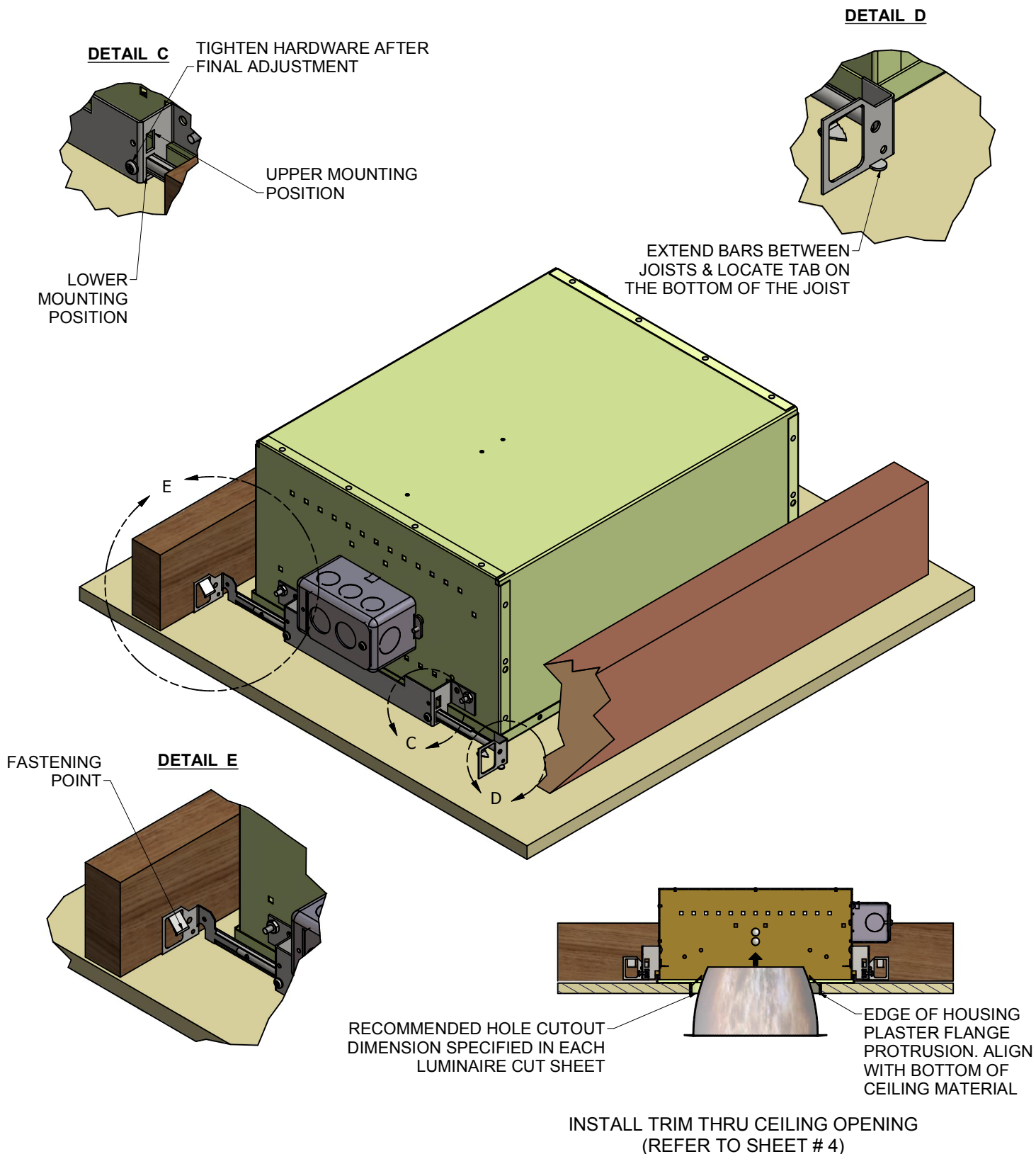
INSTALL TRIM ASSEMBLY AFTER
INSTALLING LUMINAIRE HOUSING
(REFER TO SHEET # 4)

DRYWALL / PLASTER CEILING INSTALLATION

BE SURE TO ADJUST VERTICAL POSITION OF MOUNTING BARS WITHIN THE BRACKET SO THAT THEY REST ON ADJACENT CEILING JOISTS (SECURE TO JOISTS AS REQUIRED)

INSTALL IN ACCORDANCE WITH ALL APPLICABLE NATIONAL AND LOCAL ELECTRIC CODES
INSTALL IN ACCORDANCE WITH ALL MARKINGS APPEARING ON OR INSIDE LUMINAIRES

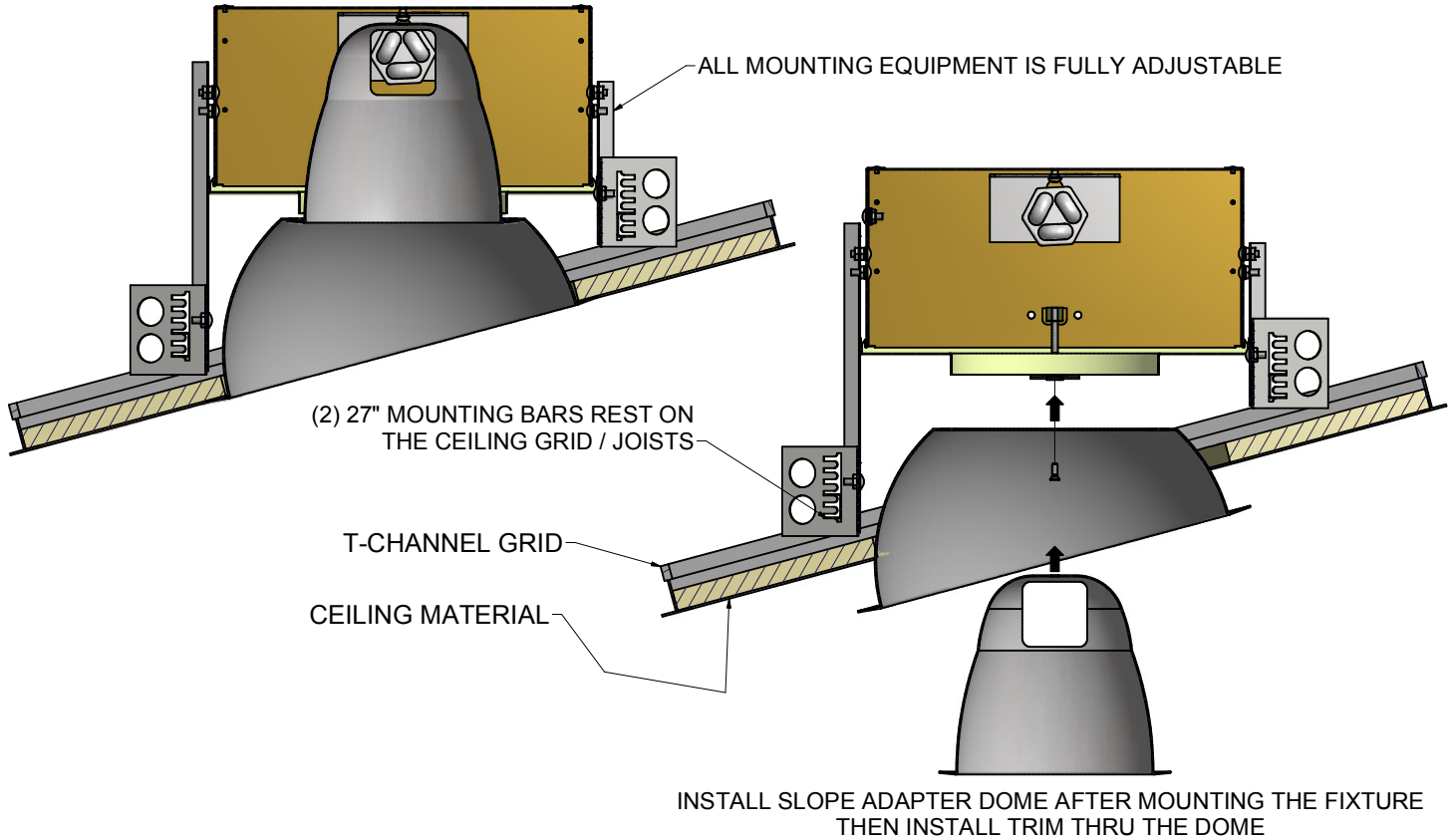
OPTIONAL RESIDENTIAL MOUNTING INSTRUCTIONS (OPTION: -RH) (2 MOUNTING BARS WITH 14-1/8" - 25-7/8" LINEAR ADJUSTABILITY & 5/8" VERTICAL ADJUSTABILITY)



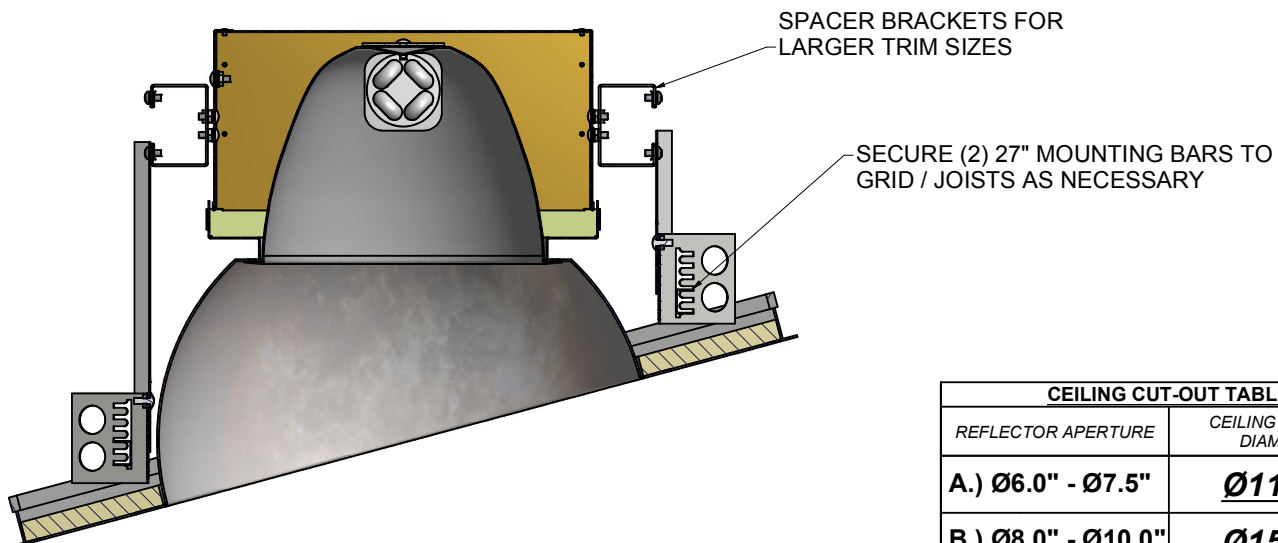
INSTALL IN ACCORDANCE WITH ALL APPLICABLE NATIONAL AND LOCAL ELECTRIC CODES
INSTALL IN ACCORDANCE WITH ALL MARKINGS APPEARING ON OR INSIDE LUMINAIRES

OPTIONAL SLOPE ADAPTER MOUNTING INSTRUCTIONS (OPTION: -82) (SHOWN WITH A 15° SLOPE FOR REFERENCE)

A.) FOR Ø6.0" - Ø7.5" TRIM APERTURE WITH Ø11.25" CEILING CUTOUT



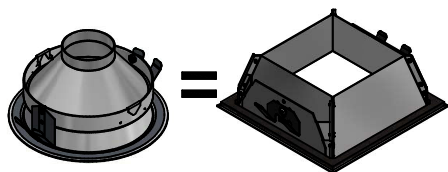
B.) FOR Ø8.0" - Ø10.0 TRIM APERTURE WITH Ø15.25 CEILING CUTOUT



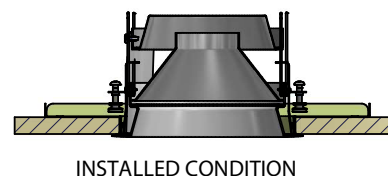
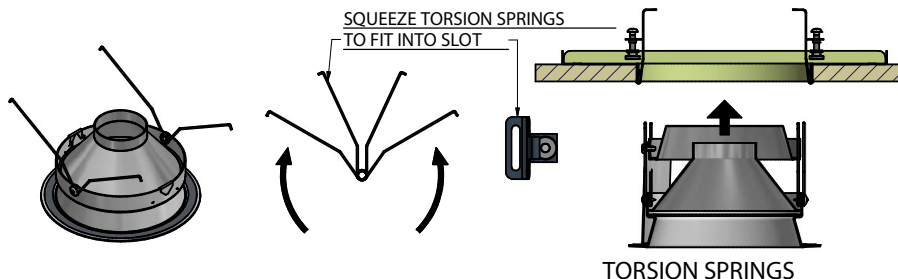
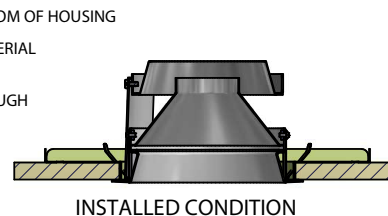
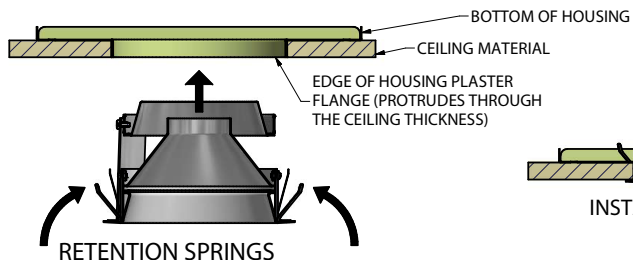
CEILING CUT-OUT TABLE	
REFLECTOR APERTURE	CEILING CUT-OUT DIAMETER
A.) Ø6.0" - Ø7.5"	<u>Ø11.25"</u>
B.) Ø8.0" - Ø10.0"	<u>Ø15.25"</u>

INSTALL IN ACCORDANCE WITH ALL APPLICABLE NATIONAL AND LOCAL ELECTRIC CODES
INSTALL IN ACCORDANCE WITH ALL MARKINGS APPEARING ON OR INSIDE LUMINAIRES

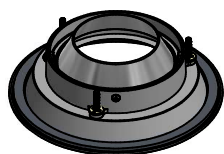
TRIM INSTALLATION GUIDE



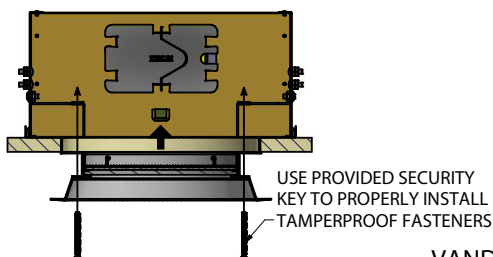
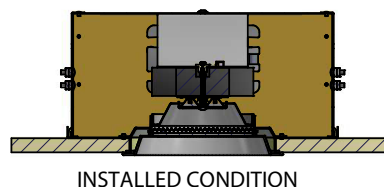
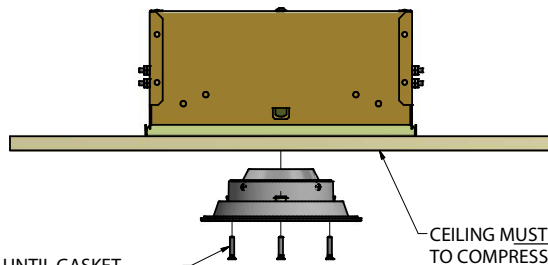
ALL INSTALLATION METHODS SHOWN ARE THE SAME FOR ROUND TRIMS AND SQUARE TRIMS. (ROUND TRIMS SHOWN FOR REFERENCE)



IP65/IP66 DESIGNS

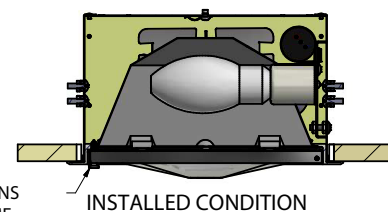
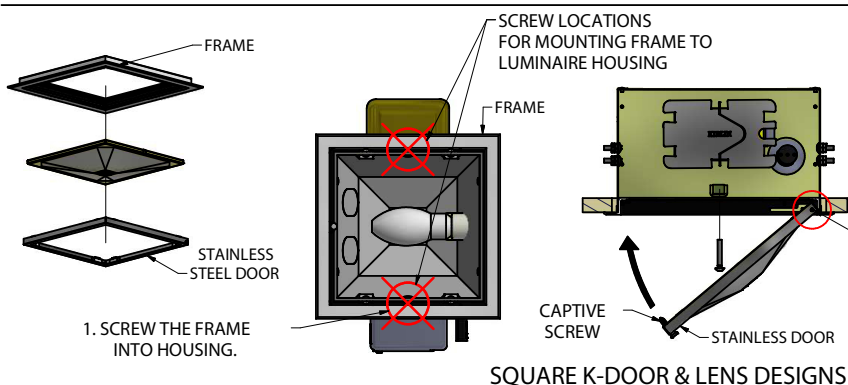
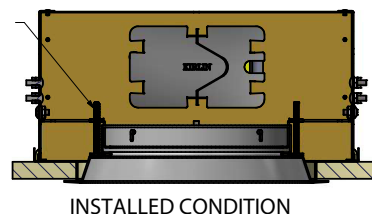


TIGHTEN SCREWS UNTIL GASKET IS FULLY COMPRESSED.

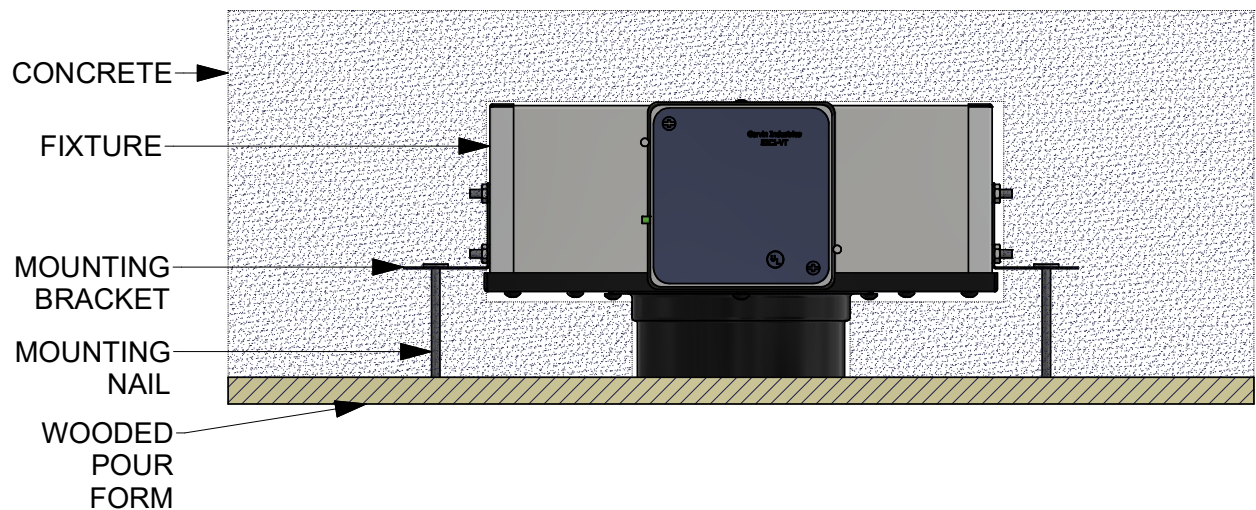
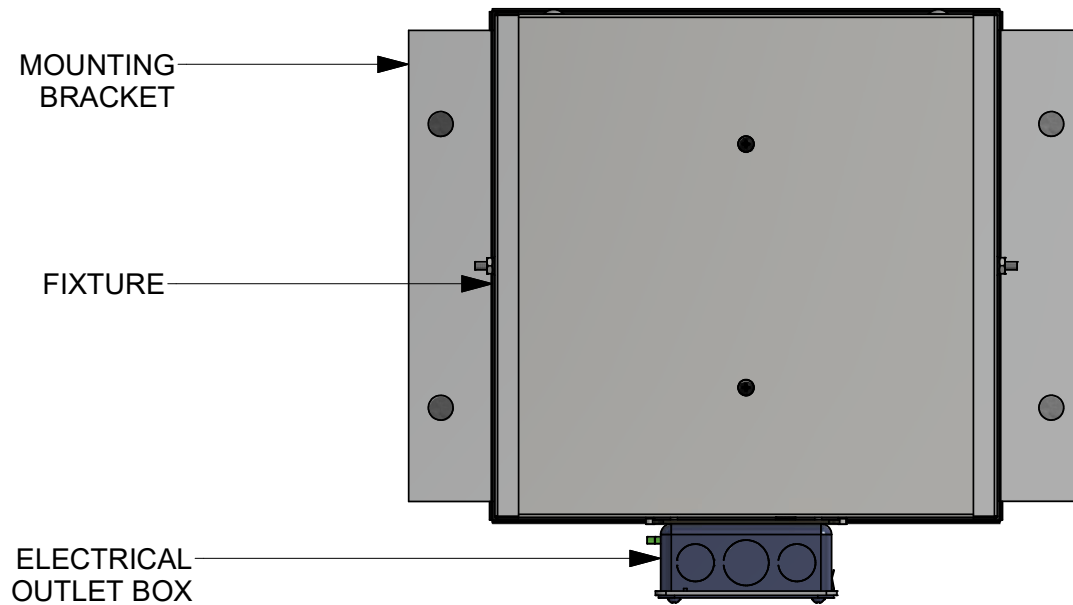


VANDAL DESIGNS

TAMPERPROOF FASTENERS SECURE TRIM ASSEMBLY TO BRACKETS INSIDE LUMINAIRE HOUSING



INSTALL IN ACCORDANCE WITH ALL APPLICABLE NATIONAL AND LOCAL ELECTRIC CODES
INSTALL IN ACCORDANCE WITH ALL MARKINGS APPEARING ON OR INSIDE LUMINAIRES



CONCRETE POUR INSTALLATION INSTRUCTIONS

1. PREWIRE FIXTURE USING APPROPRIATE CONDUIT & FITTINGS.
2. POSITION BOTTOM EDGE OF LUMINAIRE ON WOODEN POUR FORM.
3. NAIL IN PLACE THROUGH ROUND HOLES IN MOUNTING BRACKET.
4. POUR CONCRETE, LET HARDEN, REMOVE FORMS.
5. NIP OFF NAIL FLUSH WITH CEILING.
6. FINISH AS NECESSARY.