

RETROFIT

LED Upgrade
for Existing
KIRLIN
Housings



CATALOG #	TYPE
JOB NAME	VOLTAGE

LED 6" Downlight Upgrade Kit • UL • Type IC

10% Dimming • 4 Distributions • 4 CCT • 3-Step Binning
 Regressed Lens • White Trim • For Existing Kirlin Housings

Specifications

Optical Assembly Delivered System Performance*

- Lumen Series: **MUST SPECIFY**
 - 2000L: 2000 nominal lumens (25W).
 - 1500L: 1500 nominal lumens (20W).
 - 1200L: 1200 nominal lumens (14W).
 - 1000L: 1000 nominal lumens (10W).
 - Distribution: WFL standard.
 Optional: -SPT, -NFL or -MFL.
 - Color temperature: 3500°K standard.
 Optional: -27K, -30K or -41K.
 - CRI: 80+. Exceptionally consistent color.
 Optional: -HC (90+).
 - LM-80 Qualified LEDs provide up to 90,000 hour life (L70**).
 - Fully sustainable: removable for servicing.
- #### Thermal Management System
- All aluminum heat sink and components maximize cool operation and long life while minimizing maintenance.
- #### LED Power Supply - Integral
- 0-10V CCR dimming standard (100-10%) or see Options.**
 - 120-277V / 50-60Hz standard. Load insensitive. Also see Option -97.

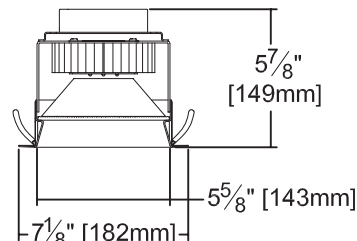
- Suitable for outdoor / indoor use: -30°C (-22°F) to 50°C (122°F).
- Trim and Lens Assembly**
 - Seamless tapered aluminum white self-flanged trim (field paintable) with high efficiency reflector above.
 - Regressed tempered prismatic lens.
- Installation (Indoor or Outdoor)**
 - Simple, secure retention of entire kit into existing Kirlin recessed housing aperture.
 - Fully sustainable: Revitalize existing fixtures without disturbing the ceiling.
- UL, C-UL (Canada) Classified Kit**
 - Type IC, wet, damp or dry locations, covered ceilings, for use in Kirlin fixtures (UL Listed).
 - Suitable for all Kirlin housings with a minimum 6.25" depth x 11.75" square size.
- IEC & FCC Compliance**
 - Meets IEC/EN 60601-1-2 electromagnetic compatibility standard for medical electrical equipment.
 - FCC Part 15 certified for EMI/RFI emissions.



LKR-06027-2000L
 LKR-06027-1500L
 LKR-06027-1200L
 LKR-06027-1000L



Wide Flood Distribution
 and 3500°K Standard
 (or see Options)



Ceiling Cut-out 6 1/2" Dia.

MUST SPECIFY	OPTIONAL	Ordering Example: LKR-06027-2000L-30K-MFL
Product Number	Options	
LKR-06027-2000L LKR-06027-1500L LKR-06027-1200L LKR-06027-1000L	See "Options" below	

Options

- #### Input Power
- 97 Specify other voltage. Consult factory.
- #### Power Supply (0-10V dim to 10% Std)
- 29† **Two wire** full range (100-1%) PWM dimming instead (Lutron). **120V only.** Consult factory.
 - 39† **Three wire** full range (100-1%) PWM dimming instead (Lutron). Consult factory.
 - D1† 0-10V 1.0% dimming instead.
 - D6† Triac (incandescent) dimming driver instead. 100-10%. 120V only.
 - E1 Remote emergency inverter for 100% of rated lumens. Run time: 90+ minutes. 120 or 277V, 60Hz input only. Specify voltage. Not for use with Option -29.
- #### Color (CCT and CRI) - 35K Std.
- 27K Color temperature 2700°K instead.
 - 30K Color temperature 3000°K instead.
- #### Trim (White Standard)
- 31 White acrylic enameled flange. For use with optional trim finishes only.
 - 32 White oversize trim ring. Specify O.D.
 - 35F Silver acrylic enameled flange.

- 41K Color temperature 4100°K instead.
- HC 90+ CRI instead.

Distributions (WFL Standard)

- SPT Spot distribution.
- NFL Narrow flood distribution.
- MFL Medium flood distribution.

Lens (Prismatic Standard)

- 13 Clear 1/8" polycarbonate added below standard or any optional flat lens.
- 23 Frosted micropismatic glass lens instead. (0.8 LLF)
- CF Custom color filter (Rosco). Specify.
- WA White acrylic (flat) diffuser instead. (0.8 LLF)

- 35T Silver acrylic enameled trim instead.
- 37F Dark bronze acrylic enameled flange.
- 37T Dark bronze acrylic enameled trim instead.
- 38F Black acrylic enameled flange.
- 38T Black acrylic enameled trim instead.
- 45 Gasket between trim flange and ceiling.
- 46 Gasket between trim and lens.
- 62 Specular clear self-flanged trim instead.
- 94 Custom color/finish. Specify. Consult factory.
- BG Anti-microbial Kirlin BioGard™ white (only) trim finish instead.

- #### Other
- 99 Special modification. Consult factory.

Projected L70** for LEDs in Kirlin Upgrade Kit	
In Open Plenum	90,000 hours
In Insulation (Type IC)	60,000 hours

**Hours at 70% lumen maintenance

LKR-06027-1500L

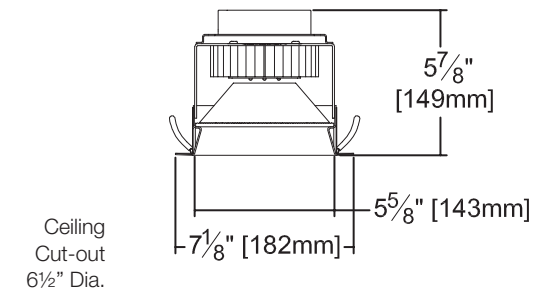
PERFORMANCE

Lumen Output Factors

APPLY THESE FACTORS TO LUMENS SHOWN BELOW

LUMEN SERIES	OUTPUT FACTOR	CFL or MH MEAN LUMENS EQUIVALENT
-2000L	1.257	70W MH
-1500L	1.000	39-50W MH
-1200L	0.812	1x42W CFL
-1000L	0.578	1x32W CFL

Dimensions



Ceiling Cut-out 6 1/2" Dia.

Detailed Photometry - Installed Fixture

Photometric testing done in accordance with IESNA LM-79

Photometry from I.T.L., Boulder, CO

-1500L STANDARD (WFL)

Lumens: 1514
 Beam: ~58°
 SC: 1.1
 LPW: 71
 Efficiency: 74.9%
 ITL Test: 85867



Total System Watts 21.2

CANDLEPOWER DISTRIBUTION	0.0					22.5					45.0					67.5					90.0				
	0	5	10	15	20	0	5	10	15	20	0	5	10	15	20	0	5	10	15	20	0	5	10	15	20
0	950	950	950	950	950	950	950	950	950	950	950	950	950	950	950	950	950	950	950	950	950	950	950	950	950
5	947	947	947	947	947	947	947	947	947	947	947	947	947	947	947	947	947	947	947	947	947	947	947	947	947
10	933	933	933	933	933	933	933	933	933	933	933	933	933	933	933	933	933	933	933	933	933	933	933	933	933
15	797	797	797	797	797	797	797	797	797	797	797	797	797	797	797	797	797	797	797	797	797	797	797	797	797
20	556	556	556	556	556	556	556	556	556	556	556	556	556	556	556	556	556	556	556	556	556	556	556	556	556
25	328	328	328	328	328	328	328	328	328	328	328	328	328	328	328	328	328	328	328	328	328	328	328	328	328
30	143	143	143	143	143	143	143	143	143	143	143	143	143	143	143	143	143	143	143	143	143	143	143	143	143
35	54	54	54	54	54	54	54	54	54	54	54	54	54	54	54	54	54	54	54	54	54	54	54	54	54
40	13	13	13	13	13	13	13	13	13	13	13	13	13	13	13	13	13	13	13	13	13	13	13	13	13
45	0	0	0	0	0	0	0	0	0	0	0	0	0	0	0	0	0	0	0	0	0	0	0	0	0
90	0	0	0	0	0	0	0	0	0	0	0	0	0	0	0	0	0	0	0	0	0	0	0	0	0

-1500L Option -NFL

Lumens: 1553
 Beam: ~33°
 SC: 0.6
 LPW: 74
 Effic: 76.8%
 ITL Test: 87936



Total System Watts 20.9

CANDLEPOWER DISTRIBUTION	0.0					22.5					45.0					67.5					90.0				
	0	5	10	15	20	0	5	10	15	20	0	5	10	15	20	0	5	10	15	20	0	5	10	15	20
0	3213	3213	3213	3213	3213	3213	3213	3213	3213	3213	3213	3213	3213	3213	3213	3213	3213	3213	3213	3213	3213	3213	3213	3213	3213
5	3035	3041	3039	3038	3032	3035	3041	3039	3038	3032	3035	3041	3039	3038	3032	3035	3041	3039	3038	3032	3035	3041	3039	3038	3032
10	2002	1982	2002	1989	1991	2002	1982	2002	1989	1991	2002	1982	2002	1989	1991	2002	1982	2002	1989	1991	2002	1982	2002	1989	1991
15	912	902	909	908	903	912	902	909	908	903	912	902	909	908	903	912	902	909	908	903	912	902	909	908	903
20	316	307	313	318	311	316	307	313	318	311	316	307	313	318	311	316	307	313	318	311	316	307	313	318	311
25	76	75	77	78	78	76	75	77	78	78	76	75	77	78	78	76	75	77	78	78	76	75	77	78	78
30	30	30	30	30	30	30	30	30	30	30	30	30	30	30	30	30	30	30	30	30	30	30	30	30	30
35	11	11	11	12	11	11	11	11	12	11	11	11	11	12	11	11	11	11	12	11	11	11	11	12	11
40	2	2	2	2	3	2	2	2	2	3	2	2	2	2	3	2	2	2	2	3	2	2	2	2	3
45	0	0	0	0	0	0	0	0	0	0	0	0	0	0	0	0	0	0	0	0	0	0	0	0	0
90	0	0	0	0	0	0	0	0	0	0	0	0	0	0	0	0	0	0	0	0	0	0	0	0	0

-1500L Option -SPT

Lumens: 1744
 Beam: ~19°
 SC: 0.3
 LPW: 83
 Effic: 86.3%
 ITL Test: 85865



Total System Watts 21.0

CANDLEPOWER DISTRIBUTION	0.0					22.5					45.0					67.5					90.0				
	0	5	10	15	20	0	5	10	15	20	0	5	10	15	20	0	5	10	15	20	0	5	10	15	20
0	10374	10374	10374	10374	10374	10374	10374	10374	10374	10374	10374	10374	10374	10374	10374	10374	10374	10374	10374	10374	10374	10374	10374	10374	10374
5	8968	8968	8968	8968	8968	8968	8968	8968	8968	8968	8968	8968	8968	8968	8968	8968	8968	8968	8968	8968	8968	8968	8968	8968	8968
10	2093	2093	2093	2093	2093	2093	2093	2093	2093	2093	2093	2093	2093	2093	2093	2093	2093	2093	2093	2093	2093	2093	2093	2093	2093
15	469	469	469	469	469	469	469	469	469	469	469	469	469	469	469	469	469	469	469	469	469	469	469	469	469
20	143	143	143	143	143	143	143	143	143	143	143	143	143	143	143	143	143	143	143	143	143	143	143	143	143
25	53	53	53	53	53	53	53	53	53	53	53	53	53	53	53	53	53	53	53	53	53	53	53	53	53
30	21	21	21	21	21	21	21	21	21	21	21	21	21	21	21	21	21	21	21	21	21	21	21	21	21
35	8	8	8	8	8	8	8	8	8	8	8	8	8	8	8	8	8	8	8	8	8	8	8	8	8
40	2	2	2	2	2	2	2	2	2	2	2	2	2	2	2	2	2	2	2	2	2	2	2	2	2
45	0	0	0	0	0	0	0	0	0	0	0	0	0	0	0	0	0	0	0	0	0	0	0	0	0
90	0	0	0	0	0	0	0	0	0	0	0	0	0	0	0	0	0	0	0	0	0	0	0	0	0

-1500L Option -MFL

CATALOG #	TYPE
JOB NAME	VOLTAGE

LED 7" Downlight Upgrade Kit • UL • Type IC

10% Dimming • 3 Distributions • 4 CCT • 3-Step Binning
 Regressed Lens • White Trim • For Existing Kirlin Housings

Specifications

Optical Assembly Delivered System Performance*

- Lumen Series: **MUST SPECIFY**
- 2000L: 2000 nominal lumens (25W).
- 1500L: 1500 nominal lumens (20W).
- 1200L: 1200 nominal lumens (14W).
- 1000L: 1000 nominal lumens (10W).
- Distribution: WFL standard.
- Optional: -NFL or -MFL.
- Color temperature: 3500°K standard.
- Optional: -27K, -30K or -41K.
- CRI: 80+. Exceptionally consistent color.
- Optional: -HC (90+).
- LM-80 Qualified LEDs provide up to 90,000 hour life (L70).
- Fully sustainable: removable for servicing.
- Thermal Management System
- All aluminum heat sink and components maximize cool operation and long life while minimizing maintenance.
- LED Power Supply - Integral
- 0-10V CCR dimming standard (100-10%) or see Options.
- 120-277V / 50-60Hz standard. Load insensitive. Also see Option -97,

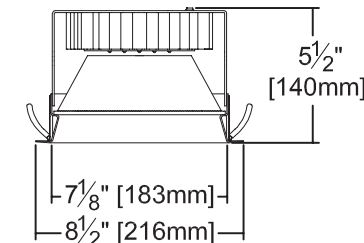
- Suitable for outdoor / indoor use: -30°C (-22°F) to 50°C (122°F).
- Trim and Lens Assembly
- Seamless tapered aluminum white self-flanged trim (field paintable) with high efficiency reflector above.
- Regressed tempered prismatic lens.
- Installation (Indoor or Outdoor)
- Simple, secure retention of entire kit into existing Kirlin recessed housing aperture.
- Fully sustainable: Revitalize existing fixtures without disturbing the ceiling.
- UL, C-UL (Canada) Classified Kit
- Type IC, wet, damp or dry locations, covered ceilings, for use in Kirlin fixtures (UL Listed).
- Suitable for all Kirlin housings with a minimum 6.25" depth x 11.75" square size.
- IEC & FCC Compliance
- Meets IEC/EN 60601-1-2 electromagnetic compatibility standard for medical electrical equipment.
- FCC Part 15 certified for EMI/RFI emissions.
- Complete standard fixture.



LKR-07027-2000L
 LKR-07027-1500L
 LKR-07027-1200L
 LKR-07027-1000L



Wide Flood Distribution
 and 3500°K Standard
 (or see Options)



Ceiling Cut-out 8" Dia.

MUST SPECIFY	OPTIONAL	Ordering Example: LKR-07027-2000L-30K-MFL
Product Number	Options	
LKR-07027-2000L LKR-07027-1500L LKR-07027-1200L LKR-07027-1000L	See "Options" below	

Options

- Input Power**
- 97 Specify other voltage. Consult factory.
- Power Supply (0-10V dim to 10% Std)**
- 29† Two wire full range (100-1%) PWM dimming instead (Lutron). 120V only. Consult factory.
 - 39† Three wire full range (100-1%) PWM dimming instead (Lutron). Consult factory.
 - D1† 0-10V 1.0% dimming instead.
 - D6† Triac (incandescent) dimming driver instead. 100-10%. 120V only.
 - EI Remote emergency inverter for 100% of rated lumens. Run time: 90+ minutes. 120 or 277V, 60Hz input only. Specify voltage. Not for use with Option -29.

- Color (CCT and CRI) - 35K Std.**
- 27K Color temperature 2700°K instead.

† Consult factory for use with -2000L lumen series.

- 30K Color temperature 3000°K instead.
- 41K Color temperature 4100°K instead.
- HC 90+ CRI instead.
- Distributions (WFL Standard)**
- NFL Narrow flood distribution.
- MFL Medium flood distribution.
- Lens (Prismatic Standard)**
- 13 Clear 1/8" polycarbonate added below standard or any optional flat lens.
- 23 Frosted microprismatic glass lens instead. (0.8 LLF)
- CF Custom color filter (Rosco). Specify.
- WA White acrylic (flat) diffuser instead. (0.8 LLF)
- Trim (White Standard)**
- 31 White acrylic enameled flange. For use with optional trim finishes only.
- 32 White oversize trim ring. Specify O.D.
- 35F Silver acrylic enameled flange.

- 35T Silver acrylic enameled trim instead.
- 37F Dark bronze acrylic enameled flange.
- 37T Dark bronze acrylic enameled trim instead.
- 38F Black acrylic enameled flange.
- 38T Black acrylic enameled trim instead.
- 45 Gasket between trim flange and ceiling.
- 46 Gasket between trim and lens.
- 62 Specular clear self-flanged trim instead.
- 94 Custom color/finish. Specify. Consult factory.
- BG Anti-microbial Kirlin BioGard™ white (only) trim finish instead.

- Other**
- 99 Special modification. Consult factory.

Projected L70** for LEDs in Kirlin Upgrade Kit	
In Open Plenum	90,000 hours
In Insulation (Type IC)	60,000 hours

**Hours at 70% lumen maintenance

LKR-07027-1500L

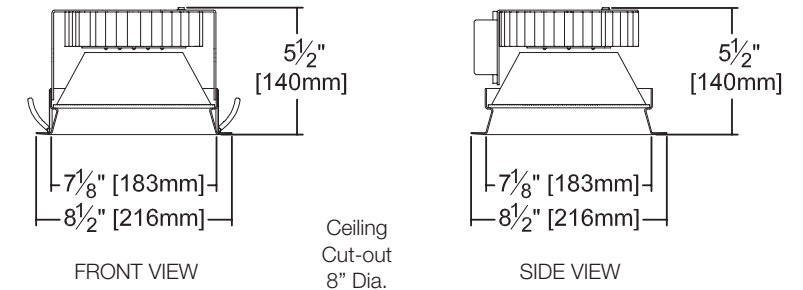
PERFORMANCE

Lumen Output Factors

APPLY THESE FACTORS TO LUMENS SHOWN BELOW

LUMEN SERIES	OUTPUT FACTOR	CFL or MH MEAN LUMENS EQUIVALENT
-2000L	1.257	2x32W CFL 70W MH
-1500L	1.000	2x26W CFL 39-50W MH
-1200L	0.812	1x42W CFL
-1000L	0.578	1x32W CFL 2x18W CFL

Dimensions



Detailed Photometry - Installed Fixture

Photometric testing done in accordance with IESNA LM-79

Photometry from I.T.L., Boulder, CO

-1500L Standard (WFL)

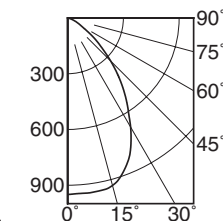
Lumens: 1514
 Beam: ~58°
 SC: 1.1
 LPW: 71
 Efficiency: 74.9%
 ITL Test: 85867



Total System Watts 21.2

Cone of Light ▲

Dist.	FC	Dia.
6	26.4	6.6
8	14.8	8.8
10	9.5	11.0
12	6.6	13.2
14	4.8	15.4
16	3.7	17.6



CANDLEPOWER DISTRIBUTION					
	0.0	22.5	45.0	67.5	90.0
0	950	950	950	950	950
5	947	947	947	947	947
10	933	933	933	933	933
15	797	797	797	797	797
20	556	556	556	556	556
25	328	328	328	328	328
30	143	143	143	143	143
35	54	54	54	54	54
40	13	13	13	13	13
45	0	0	0	0	0
90	0	0	0	0	0

-1500L Option -NFL

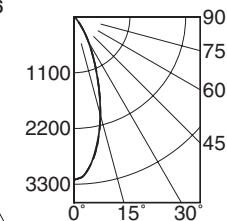
Lumens: 1553
 Beam: ~33°
 SC: 0.6
 LPW: 74
 Effic: 76.8%
 ITL Test: 87936



Total System Watts 20.9

Cone of Light ▲

Dist.	FC	Dia.
6	89.3	3.5
8	50.2	4.7
10	32.1	5.9
12	22.3	7.1
14	16.4	8.2
16	12.6	9.4



CANDLEPOWER DISTRIBUTION					
	0.0	22.5	45.0	67.5	90.0
0	3213	3213	3213	3213	3213
5	3035	3041	3039	3038	3032
10	2002	1982	2002	1989	1991
15	912	902	909	908	903
20	316	307	313	318	311
25	76	75	77	78	78
30	30	30	30	30	30
35	11	11	11	12	11
40	2	2	2	2	3
45	0	0	0	0	0
90	0	0	0	0	0

-1500L Option -MFL

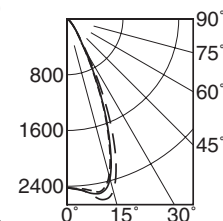
Lumens: 1721
 Beam: ~45°
 SC: 0.8
 LPW: 83
 Effic: 85.1%
 ITL Test: 87190



Total System Watts 20.8

Cone of Light ▲

Dist.	FC	Dia.
6	67.3	4.9
8	37.8	6.6
10	24.2	8.2
12	16.8	9.9
14	12.4	11.5
16	9.5	13.2



CANDLEPOWER DISTRIBUTION					
	0.0	22.5	45.0	67.5	90.0
0	2421	2421	2421	2421	2421
5	2446	2449	2467	2478	2469
10	2322	2445	2552	2481	2371
15	978	1116	1234	1147	1018
20	251	266	280	274	263
25	89	91	91	95	94
30	34	34	34	35	35
35	13	13	13	13	13
40	2	2	2	2	2
45	0	0	0	0	0
90	0	0	0	0	0

LM-80 Qualified • LM-79 Certified Photometry

* LED manufacturers maintain a tolerance of ±7% on flux (lumens) and power (electrical) measurements. Kirlin photometrics are actual test data from Independent Testing Laboratories (ITL) where photometry was measured from 2022 lumen (-1500L) light engines (within the established tolerance).

▲ Cone of Light Key
 Dia. (in ft.) shown is where FC value is half the FC at nadir.
 Dist. Distance (Ft.) from fixture
 FC Footcandles at nadir (0°)
 Dia. Circle of light at 50% of FC

SUBMITTAL DATA

JOB NAME _____

TYPE _____

WATTAGE _____ VOLTAGE _____

CATALOG NUMBER _____

APPROVAL STAMP



CATALOG #	TYPE
JOB NAME	VOLTAGE

LED 8" Downlight Upgrade Kit • UL Wet 10% Dimming • 3 Distributions • 4 CCT • 3-Step Binning Regressed Lens • White Trim • For Existing Kirlin Housings

Specifications

Optical Assembly

Delivered System Performance*

- Lumen Series: **MUST SPECIFY**
- 2500L: 2500 nominal lumens (35W).
- Distribution: WFL standard.
Optional: -NFL or -MFL.
- Color temperature: 3500°K standard.
Optional: -27K, -30K or -41K.
- CRI: 80+. Exceptionally consistent color.
Optional: -HC (90+).
- LM-80 Qualified LEDs provide up to 60,000 hour life (L70).
- Fully sustainable: removable for servicing.

Thermal Management System

- All aluminum heat sink and components maximize cool operation and long life while minimizing maintenance.

LED Power Supply - Integral

- 0-10V CCR dimming standard (100-10%) or see Options.**
- 120-277V / 50-60Hz standard. Load insensitive. Also see Option -97,
- Suitable for outdoor / indoor use: -30°C (-22°F) to 50°C (122°F).

Trim and Lens Assembly

- Seamless tapered aluminum white self-flanged trim (field paintable) with high efficiency reflector above.
- Regressed tempered prismatic lens.
- Simple, secure retention of entire kit into existing Kirlin recessed housing aperture.
- Fully sustainable: Revitalize existing fixtures without disturbing the ceiling.

Installation (Indoor or Outdoor)

- Simple, secure retention of entire kit into existing Kirlin recessed housing aperture.
- Fully sustainable: Revitalize existing fixtures without disturbing the ceiling.

UL, C-UL (Canada) Classified Kit

- Wet, damp or dry locations, covered ceilings, for use in Kirlin fixtures (UL Listed).
- Suitable for all Kirlin housings with a minimum 6.25" depth x 11.75" square size.

IEC & FCC Compliance

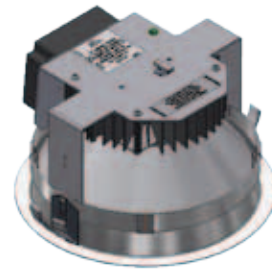
- Meets IEC/EN 60601-1-2 electromagnetic compatibility standard for medical electrical equipment.
- FCC Part 15 certified for EMI/RFI emissions.

5 Year

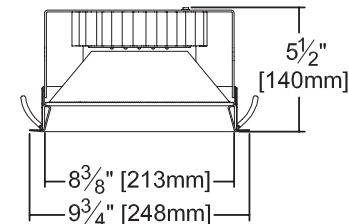
Limited Warranty

- Complete standard fixture.

LKR-08034-2500L



Wide Flood Distribution and 3500°K Standard
(or see Options)



Ceiling Cut-out 9" Dia.

MUST SPECIFY	OPTIONAL	Ordering Example: LKR-08034-2500L-30K-MFL
Product Number	Options	
LKR-08034-2500L	See "Options" below	

Options

Input Power

- 97 Specify other voltage. Consult factory.

Power Supply (0-10V dim to 10% Std)

- 29 **Two wire** full range (100-1%) PWM dimming instead (Lutron). **120V only.** Consult factory.
- 39 **Three wire** full range (100-1%) PWM dimming instead (Lutron). Consult factory.
- D1 0-10V 1.0% dimming instead.
- D6 Triac (incandescent) dimming driver instead. 100-10%. 120V only.
- E1 Remote emergency inverter for 100% of rated lumens. Run time: 90+ minutes. 120 or 277V, 60Hz input only. Specify voltage. Not for use with Option -29.

Color (CCT and CRI) - 35K Std.

- 27K Color temperature 2700°K instead.
- 30K Color temperature 3000°K instead.
- 41K Color temperature 4100°K instead.
- HC 90+ CRI instead.

Distributions (WFL Standard)

- NFL Narrow flood distribution.
- MFL Medium flood distribution.

Lens (Prismatic Standard)

- 13 Clear 1/8" polycarbonate added below standard or any optional flat lens.
- 23 Frosted microprismatic glass lens instead. (0.8 LLF)
- CF Custom color filter (Rosco). Specify.
- WA White acrylic (flat) diffuser instead. (0.8 LLF)

Trim (White Standard)

- 31 White acrylic enameled flange. For use with optional trim finishes only.
- 32 White oversize trim ring. Specify O.D.
- 35F Silver acrylic enameled flange.
- 35T Silver acrylic enameled trim instead.
- 37F Dark bronze acrylic enameled flange.
- 37T Dark bronze acrylic enameled trim instead.
- 38F Black acrylic enameled flange.
- 38T Black acrylic enameled trim instead.
- 45 Gasket between trim flange and ceiling.
- 46 Gasket between trim and lens.
- 94 Custom color/finish. Specify. Consult factory.
- BG Anti-microbial Kirlin BioGard™ white (only) trim finish instead.

Other

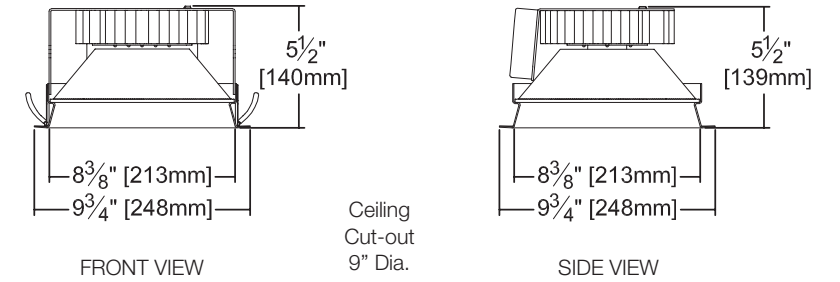
- 99 Special modification. Consult factory.

LKR-08034-2500L

PERFORMANCE

LUMEN SERIES	CFL, MH or T4 MEAN LUMENS EQUIVALENT
-2500L	2x42W CFL 70W MH 250W T4

Dimensions



Detailed Photometry - Installed Fixture

Photometric testing done in accordance with IESNA LM-79

Photometry from UL Verification Services, Allentown, PA

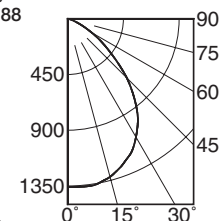
-2500L STANDARD (WFL)

Lumens: 2658
Beam: ~62°
SC: 1.2
LPW: 64
Efficiency: 71.5%
UL Test: 1259188



Total System Watts 34.7

Dist.	FC	Dia.
6	37.7	7.2
8	21.2	9.6
10	13.6	12.0
12	9.4	14.5
14	6.9	16.9
16	5.3	19.3



CANDLEPOWER DISTRIBUTION					
	0.0	22.5	45.0	67.5	90.0
0	1358	1358	1358	1358	1358
5	1361	1361	1361	1361	1361
10	1322	1322	1322	1322	1322
15	1202	1202	1202	1202	1202
20	989	989	989	989	989
25	675	675	675	675	675
30	349	349	349	349	349
35	128	128	128	128	128
40	30	30	30	30	30
45	0	0	0	0	0
90	0	0	0	0	0

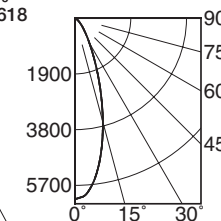
-2500L Option -NFL

Lumens: 2995
Beam: ~18°
SC: 0.6
LPW: 86
Efficiency: 80.6%
UL Test: 1264618



Total System Watts 34.7

Dist.	FC	Dia.
6	477.0	1.9
8	268.0	2.6
10	172.0	3.2
12	119.0	3.9
14	87.5	4.5
16	67.2	5.2



CANDLEPOWER DISTRIBUTION					
	0.0	22.5	45.0	67.5	90.0
0	17150	17150	17150	17150	17150
5	14070	14070	14070	14070	14070
10	3632	3632	3632	3632	3632
15	991	991	991	991	991
20	381	381	381	381	381
25	165	165	165	165	165
30	70	70	70	70	70
35	26	26	26	26	26
40	8	8	8	8	8
45	5	5	5	5	5
90	0	0	0	0	0

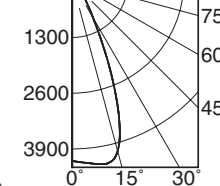
-2500L Option -MFL

Lumens: 3061
Beam: ~44°
SC: 0.8
LPW: 89
Efficiency: 82.4%
UL Test: 1259187



Total System Watts 34.5

Dist.	FC	Dia.
6	116.0	4.8
8	65.3	6.4
10	41.8	8.0
12	29.0	9.6
14	21.3	11.2
16	16.3	12.8



CANDLEPOWER DISTRIBUTION					
	0.0	22.5	45.0	67.5	90.0
0	4181	4181	4181	4181	4181
5	4246	4246	4246	4246	4246
10	4088	4088	4088	4088	4088
15	1811	1811	1811	1811	1811
20	575	575	575	575	575
25	249	249	249	249	249
30	102	102	102	102	102
35	36	36	36	36	36
40	7	7	7	7	7
45	0	0	0	0	0
90	0	0	0	0	0

LM-80 Qualified • LM-79 Certified Photometry

* LED manufacturers maintain a tolerance of ±7% on flux (lumens) and power (electrical) measurements. Kirlin photometrics are actual test data from Independent Testing Laboratories (ITL) where photometry was measured from 3717 lumen (-2500L) light engines (within the established tolerance).

▲ Cone of Light Key
Dia. (in ft.) shown is where FC value is half the FC at nadir.

Dist. Distance (Ft.) from fixture
FC Footcandles at nadir (0°)
Dia. Circle of light at 50% of FC

SUBMITTAL DATA

JOB NAME

TYPE

WATTAGE

VOLTAGE

CATALOG NUMBER

APPROVAL STAMP



LIMITED WARRANTY: CATALOGED KIRLIN FIXTURES ARE WARRANTED FREE OF DEFECTS IN WORKMANSHIP OR MATERIAL FOR FIVE YEARS FROM DATE OF PURCHASE, INSTALLED TO N.E.C. IN NORMAL USE. Manufacturer at the option will replace or repair such fixture or refund the purchase price on presentation of proof of purchase and defective fixture to the office of manufacturer within five years of original shipment. Liability of manufacturer is limited to the foregoing, and manufacturer shall not be liable for any other damages, direct or indirect, sustained or suffered by purchaser or any person. This warranty is applied to the Kirlin brand of all other warranties, expressed or implied. Seller does not warrant as to merchantability or fitness for a particular use, nor will any oral statement, contract or agreement be binding on the manufacturer without the manufacturer's written approval.

CATALOG #	TYPE
JOB NAME	VOLTAGE

LED 6" Downlight Upgrade Kit • UL Wet

10% Dimming • 3 Distributions • 4 CCT • 3-Step Binning
Regressed Lens • White Trim • For Existing Kirlin Housings

Specifications

Optical Assembly

Delivered System Performance*

- Lumen Series: **MUST SPECIFY**
- 5000L: 5000 nominal lumens (55W).
- 3500L: 3500 nominal lumens (42W).
- Distribution: WFL or -MFL.
- Optional: -NFL or -MFL.
- Color temperature: 3500°K standard.
- Optional: -27K, -30K or -41K.
- CRI: 80+. Exceptionally consistent color.
- Optional: -HC (90+).
- LM-80 Qualified LEDs provide up to 60,000 hour life (L70).
- Fully sustainable: removable for servicing.

Thermal Management System

- All aluminum heat sink and components maximize cool operation and long life while minimizing maintenance.

LED Power Supply - Included

- 0-10V CCR dimming standard (100-10%) or see Options.**
- 120-277V / 50-60Hz standard. Load insensitive. Also see Option -97.
- Suitable for outdoor / indoor use: -30°C (-22°F) to 50°C (122°F).

Trim and Lens Assembly

- Seamless tapered aluminum white self-flanged trim (field paintable) with high efficiency reflector above.
 - Regressed tempered prismatic lens.
- #### Installation (Indoor or Outdoor)
- Simple, secure retention of entire kit into existing Kirlin recessed housing aperture.
 - Fully sustainable: Revitalize existing fixtures without disturbing the ceiling.

UL, C-UL (Canada) Classified Kit

- Wet, damp or dry locations, covered ceilings, for use in Kirlin fixtures (UL Listed).
- Suitable for all Kirlin housings with a minimum 6.25" depth x 11.75" square size.

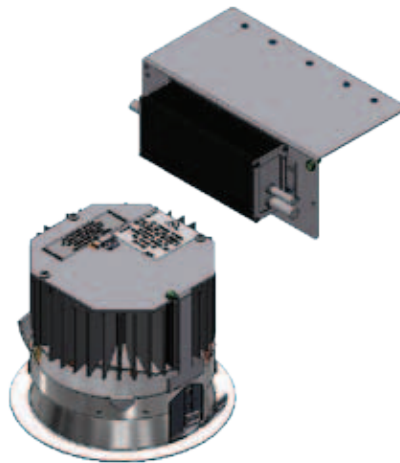
IEC & FCC Compliance

- Meets IEC/EN 60601-1-2 electromagnetic compatibility standard for medical electrical equipment.
- FCC Part 15 certified for EMI/RFI emissions.

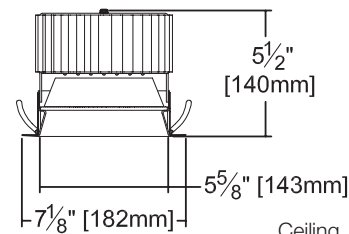
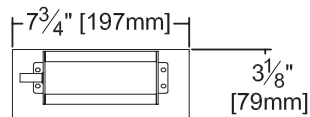
5 YEAR
Limited Warranty

- Complete standard fixture.

LKR-06055-5000L LKR-06055-3500L



Wide Flood Distribution
and 3500°K Standard
(or see Options)



Ceiling
Cut-out
6 1/2" Dia.

MUST SPECIFY	OPTIONAL	Ordering Example: LKR-06055-5000L-30K-MFL
Product Number	Options	
LKR-06055-5000L LKR-06055-3500L	See "Options" below	

Options

Input Power

- 97 Specify other voltage. Consult factory.

Power Supply (0-10V dim to 10% Std)

- 29 **Two wire** full range (100-1%) PWM dimming instead (Lutron). **120V only.** Consult factory.
- 39 **Three wire** full range (100-1%) PWM dimming instead (Lutron). Consult factory.
- D1 0-10V 1.0% dimming instead.
- D6 Triac (incandescent) dimming driver instead. 100-10%. 120V only.
- E1 Remote emergency inverter for 100% of rated lumens. Run time: 90+ minutes. 120 or 277V, 60Hz input only. Specify voltage. Not for use with Option -29.

Color (CCT and CRI) - 35K Std.

- 27K Color temperature 2700°K instead.

- 30K Color temperature 3000°K instead.
- 41K Color temperature 4100°K instead.
- HC 90+ CRI instead.

Distributions (WFL Standard)

- NFL Narrow flood distribution.
- MFL Medium flood distribution.

Lens (Prismatic Standard)

- 13 Clear 1/8" polycarbonate added below standard or any optional flat lens.
- 23 Frosted microprismatic glass lens instead. (0.8 LLF)
- CF Custom color filter (Rosco). Specify.
- WA White acrylic (flat) diffuser instead. (0.8 LLF)

Trim (White Standard)

- 31 White acrylic enameled flange. For use with optional trim finishes only.

- 32 White oversize trim ring. Specify O.D.
- 35F Silver acrylic enameled flange.
- 35T Silver acrylic enameled trim instead.
- 37F Dark bronze acrylic enameled flange.
- 37T Dark bronze acrylic enameled trim instead.
- 38F Black acrylic enameled flange.
- 38T Black acrylic enameled trim instead.
- 45 Gasket between trim flange and ceiling.
- 46 Gasket between trim and lens.
- 62 Specular clear self-flanged trim instead.
- 94 Custom color/finish. Specify. Consult factory.
- BG Anti-microbial Kirlin BioGard™ white (only) trim finish instead.

Other

- 99 Special modification. Consult factory.

LKR-06055-5000L

PERFORMANCE

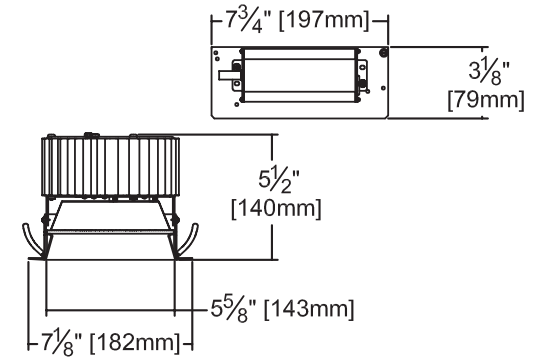
Lumen Output Factors

APPLY THESE FACTORS TO LUMENS SHOWN BELOW

LUMEN SERIES	OUTPUT FACTOR	MH or T4 MEAN LUMENS EQUIVALENT
-5000L	1.000	150W MH 500W T4
-3500L	0.802	100W MH

Dimensions

Ceiling
Cut-out
6 1/2" Dia.



Detailed Photometry - Installed Fixture

Photometric testing done in accordance with IESNA LM-79

Photometry from UL Verification Services, Allentown, PA

-5000L STANDARD (WFL)

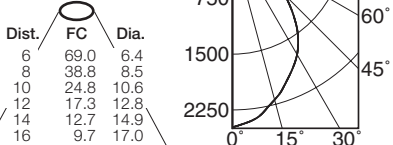
Lumens: 4161
Beam: ~56°
SC: 1.1
LPW: 69
Efficiency: 70.0%
UL Test: 11356591.11



Total System Watts 60.2

		CANDLEPOWER DISTRIBUTION				
		0.0	22.5	45.0	67.5	90.0
0	2484	2484	2484	2484	2484	2484
5	2424	2424	2424	2424	2424	2424
15	2188	2188	2188	2188	2188	2188
25	1892	1892	1892	1892	1892	1892
35	1536	1536	1536	1536	1536	1536
45	994	994	994	994	994	994
55	522	522	522	522	522	522
65	207	207	207	207	207	207
75	35	35	35	35	35	35
85	1	1	1	1	1	1
90	0	0	0	0	0	0

Cone of Light ▲



-5000L Option -NFL

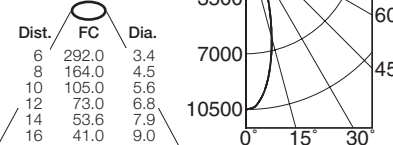
Lumens: 4989
Beam: ~31°
SC: 0.6
LPW: 84
Efficiency: 83.9%
UL Test: 11356591.09



Total System Watts 59.7

		CANDLEPOWER DISTRIBUTION				
		0.0	22.5	45.0	67.5	90.0
0	10510	10510	10510	10510	10510	10510
5	9953	9953	9953	9953	9953	9953
15	6198	6198	6198	6198	6198	6198
25	2669	2669	2669	2669	2669	2669
35	976	976	976	976	976	976
45	401	401	401	401	401	401
55	159	159	159	159	159	159
65	50	50	50	50	50	50
75	10	10	10	10	10	10
85	0	0	0	0	0	0
90	0	0	0	0	0	0

Cone of Light ▲



-5000L Option -MFL

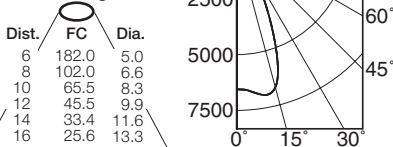
Lumens: 4897
Beam: ~45°
SC: 0.8
LPW: 82
Efficiency: 82.4%
UL Test: 11356591.10



Total System Watts 59.4

		CANDLEPOWER DISTRIBUTION				
		0.0	22.5	45.0	67.5	90.0
0	6553	6553	6553	6553	6553	6553
5	6653	6653	6653	6653	6653	6653
15	6691	6691	6691	6691	6691	6691
25	3127	3127	3127	3127	3127	3127
35	891	891	891	891	891	891
45	313	313	313	313	313	313
55	119	119	119	119	119	119
65	43	43	43	43	43	43
75	7	7	7	7	7	7
85	0	0	0	0	0	0
90	0	0	0	0	0	0

Cone of Light ▲



LM-80 Qualified • LM-79 Certified Photometry

* LED manufacturers maintain a tolerance of ±7% on flux (lumens) and power (electrical) measurements. Kirlin photometrics are actual test data from Independent Testing Laboratories (ITL) where photometry was measured from 5946 lumen (-5000L) light engines (within the established tolerance).

▲ Cone of Light Key
Dia. (in ft.) shown is where FC value is half the FC at nadir.

Dist. Distance (Ft.) from fixture
FC Footcandles at nadir (0°)
Dia. Circle of light at 50% of FC

SUBMITTAL DATA

JOB NAME

TYPE

WATTAGE

VOLTAGE

CATALOG NUMBER

APPROVAL STAMP



CATALOG #	TYPE
JOB NAME	VOLTAGE

LED 7" Downlight Upgrade Kit • UL Wet

10% Dimming • 3 Distributions • 4 CCT • 3-Step Binning
Regressed Lens • White Trim • For Existing Kirlin Housings

Specifications

Optical Assembly Delivered System Performance*

- Lumen Series: **MUST SPECIFY**
- 5000L: 5000 nominal lumens (55W).
- 3500L: 3500 nominal lumens (42W).
- Distribution: WFL standard.
- Optional: -NFL or -MFL.
- Color temperature: 3500°K standard.
- Optional: -27K, -30K or -41K.
- CRI: 80+. Exceptionally consistent color.
- Optional: -HC (90+).
- LM-80 Qualified LEDs provide up to 60,000 hour life (L70).
- Fully sustainable: removable for servicing.

Thermal Management System

- All aluminum heat sink and components maximize cool operation and long life while minimizing maintenance.

LED Power Supply - Included

- 0-10V CCR dimming standard (100-10%) or see Options.**
- 120-277V / 50-60Hz standard. Load insensitive. Also see Option -97.
- Suitable for outdoor / indoor use: -30°C (-22°F) to 50°C (122°F).

Trim and Lens Assembly

- Seamless tapered aluminum white self-flanged trim (field paintable) with high efficiency reflector above.
- Regressed tempered prismatic lens.
- Installation (Indoor or Outdoor)
- Simple, secure retention of entire kit into existing Kirlin recessed housing aperture.
- Fully sustainable: Revitalize existing fixtures without disturbing the ceiling.

UL, C-UL (Canada) Classified Kit

- Wet, damp or dry locations, covered ceilings, for use in Kirlin fixtures (UL Listed).
- Suitable for all Kirlin housings with a minimum 6.25" depth x 11.75" square size.

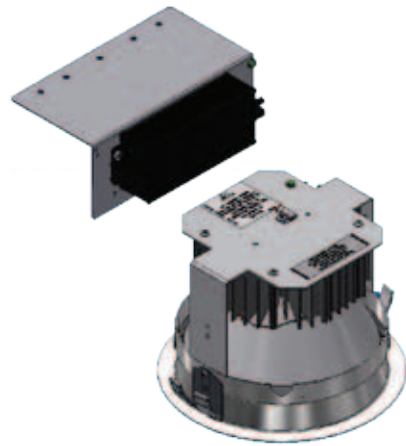
IEC & FCC Compliance

- Meets IEC/EN 60601-1-2 electromagnetic compatibility standard for medical electrical equipment.
- FCC Part 15 certified for EMI/RFI emissions.

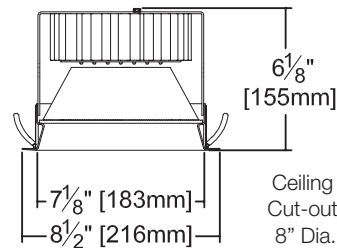
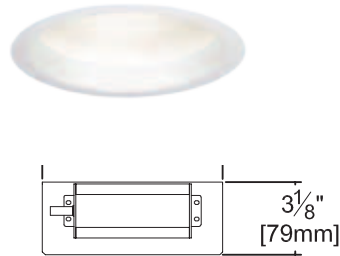
5 Year Limited Warranty

- Complete standard fixture.

LKR-07055-5000L LKR-07055-3500L



Wide Flood Distribution and 3500°K Standard (or see Options)



MUST SPECIFY	OPTIONAL	Ordering Example: LKR-07055-5000L-30K-MFL
Product Number	Options	
LKR-07055-5000L LKR-07055-3500L	See "Options" below	

Options

Input Power

- 97 Specify other voltage. Consult factory.

Power Supply (0-10V dim to 10% Std)

- 29 **Two wire** full range (100-1%) PWM dimming instead (Lutron). **120V only.** Consult factory.
- 39 **Three wire** full range (100-1%) PWM dimming instead (Lutron). Consult factory.
- D1 0-10V 1.0% dimming instead.
- D6 Triac (incandescent) dimming driver instead. 100-10%. 120V only.
- EI Remote emergency inverter for 100% of rated lumens. Run time: 90+ minutes. 120 or 277V, 60Hz input only. Specify voltage. Not for use with Option -29.

Color (CCT and CRI) - 35K Std.

- 27K Color temperature 2700°K instead.

- 30K Color temperature 3000°K instead.
- 41K Color temperature 4100°K instead.
- HC 90+ CRI instead.

Distributions (WFL Standard)

- NFL Narrow flood distribution.
- MFL Medium flood distribution.

Lens (Prismatic Standard)

- 13 Clear 1/8" polycarbonate added below standard or any optional flat lens.
- 23 Frosted microprismatic glass lens instead. (0.8 LLF)
- CF Custom color filter (Rosco). Specify.
- WA White acrylic (flat) diffuser instead. (0.8 LLF)

Trim (White Standard)

- 31 White acrylic enameled flange. For use with optional trim finishes only.

- 32 White oversize trim ring. Specify O.D.
- 35F Silver acrylic enameled flange.
- 35T Silver acrylic enameled trim instead.
- 37F Dark bronze acrylic enameled flange.
- 37T Dark bronze acrylic enameled trim instead.
- 38F Black acrylic enameled flange.
- 38T Black acrylic enameled trim instead.
- 45 Gasket between trim flange and ceiling.
- 46 Gasket between trim and lens.
- 62 Specular clear self-flanged trim instead.
- 94 Custom color/finish. Specify. Consult factory.
- BG Anti-microbial Kirlin BioGard™ white (only) trim finish instead.

Other

- 99 Special modification. Consult factory.

LKR-07055-5000L

PERFORMANCE

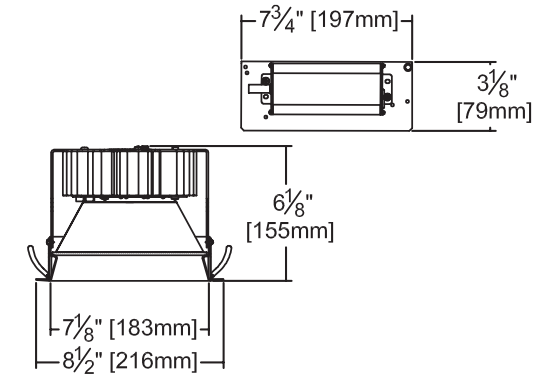
Lumen Output Factors

APPLY THESE FACTORS TO LUMENS SHOWN BELOW

LUMEN SERIES	OUTPUT FACTOR	MH or T4 MEAN LUMENS EQUIVALENT
-5000L	1.000	150W MH 500W T4
-3500L	0.802	100W MH

Dimensions

Ceiling Cut-out 8" Dia.



Detailed Photometry - Installed Fixture

Photometric testing done in accordance with IESNA LM-79

Photometry from UL Verification Services, Allentown, PA

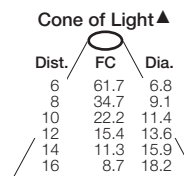
-5000L STANDARD (WFL)

Lumens: 4134
Beam: ~59°
SC: 1.1
LPW: 69
Efficiency: 69.5%
UL Test: 11356591.14



Total System Watts 59.7

CANDLEPOWER DISTRIBUTION					
	0.0	22.5	45.0	67.5	90.0
0	2220	2220	2220	2220	2220
5	2207	2207	2207	2207	2207
15	2080	2080	2080	2080	2080
25	1831	1831	1831	1831	1831
35	1491	1491	1491	1491	1491
45	1011	1011	1011	1011	1011
55	552	552	552	552	552
65	224	224	224	224	224
75	57	57	57	57	57
85	1	1	1	1	1
90	0	0	0	0	0



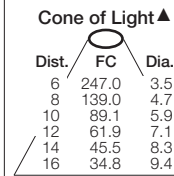
-5000L Option -NFL

Lumens: 4827
Beam: ~33°
SC: 0.6
LPW: 82
Efficiency: 81.2%
UL Test: 11356591.12



Total System Watts 59.0

CANDLEPOWER DISTRIBUTION					
	0.0	22.5	45.0	67.5	90.0
0	8910	8910	8910	8910	8910
5	8465	8465	8465	8465	8465
15	5535	5535	5535	5535	5535
25	2610	2610	2610	2610	2610
35	1118	1118	1118	1118	1118
45	465	465	465	465	465
55	187	187	187	187	187
65	65	65	65	65	65
75	16	16	16	16	16
85	0	0	0	0	0
90	0	0	0	0	0



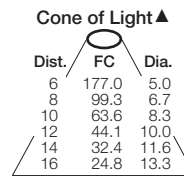
-5000L Option -MFL

Lumens: 4900
Beam: ~45°
SC: 0.8
LPW: 83
Efficiency: 82.4%
UL Test: 11356591.13



Total System Watts 59.4

CANDLEPOWER DISTRIBUTION					
	0.0	22.5	45.0	67.5	90.0
0	6357	6357	6357	6357	6357
5	6467	6467	6467	6467	6467
15	6507	6507	6507	6507	6507
25	3073	3073	3073	3073	3073
35	931	931	931	931	931
45	356	356	356	356	356
55	144	144	144	144	144
65	55	55	55	55	55
75	12	12	12	12	12
85	0	0	0	0	0
90	0	0	0	0	0



LM-80 Qualified • LM-79 Certified Photometry

* LED manufacturers maintain a tolerance of ±7% on flux (lumens) and power (electrical) measurements. Kirlin photometrics are actual test data from Independent Testing Laboratories (ITL) where photometry was measured from 5946 lumen (-5000L) light engines (within the established tolerance).

▲ Cone of Light Key
Dia. (in ft.) shown is where FC value is half the FC at nadir.
Dist. Distance (Ft.) from fixture
FC Footcandles at nadir (0°)
Dia. Circle of light at 50% of FC

SUBMITTAL DATA

JOB NAME

TYPE

WATTAGE

VOLTAGE

CATALOG NUMBER

APPROVAL STAMP



CATALOG #	TYPE
JOB NAME	VOLTAGE

LED 8" Downlight Upgrade Kit • UL Wet

10% Dimming • 3 Distributions • 4 CCT • 3-Step Binning
 Regressed Lens • White Trim • For Existing Kirlin Housings

Specifications

Optical Assembly Delivered System Performance*

- Lumen Series: **MUST SPECIFY**
- 5000L: 5000 nominal lumens (55W).
- 3500L: 3500 nominal lumens (42W).
- Distribution: WFL standard.
- Optional: -NFL or -MFL.
- Color temperature: 3500°K standard.
- Optional: -27K, -30K or -41K.
- CRI: 80+. Exceptionally consistent color.
- Optional: -HC (90+).
- LM-80 Qualified LEDs provide up to 60,000 hour life (L70).
- Fully sustainable: removable for servicing.

Thermal Management System

- All aluminum heat sink and components maximize cool operation and long life while minimizing maintenance.

LED Power Supply - Included

- 0-10V CCR dimming standard (100-10%) or see Options.**
- 120-277V / 50-60Hz standard. Load insensitive. Also see Option -97.
- Suitable for outdoor / indoor use: -30°C (-22°F) to 50°C (122°F).

Trim and Lens Assembly

- Seamless tapered aluminum white self-flanged trim (field paintable) with high efficiency reflector above.
- Regressed tempered prismatic lens.
- Installation (Indoor or Outdoor)
- Simple, secure retention of entire kit into existing Kirlin recessed housing aperture.
- Fully sustainable: Revitalize existing fixtures without disturbing the ceiling.

UL, C-UL (Canada) Classified Kit

- Wet, damp or dry locations, covered ceilings, for use in Kirlin fixtures (UL Listed).
- Suitable for all Kirlin housings with a minimum 6.25" depth x 11.75" square size.

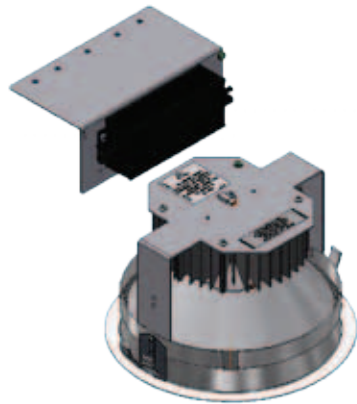
IEC & FCC Compliance

- Meets IEC/EN 60601-1-2 electromagnetic compatibility standard for medical electrical equipment.
- FCC Part 15 certified for EMI/RFI emissions.

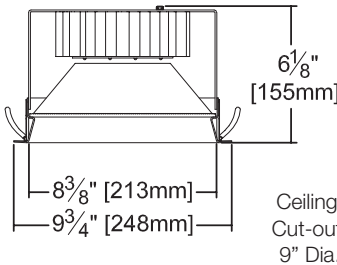
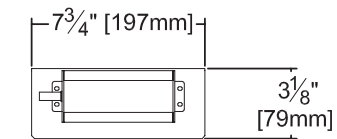
5 Year Limited Warranty

- Complete standard fixture.

LKR-08055-5000L LKR-08055-3500L



Wide Flood Distribution and 3500°K Standard (or see Options)



MUST SPECIFY	OPTIONAL	Ordering Example: LKR-08055-5000L-30K-MFL
Product Number	Options	
LKR-08055-5000L LKR-08055-3500L	See "Options" below	

Options

Input Power

- 97 Specify other voltage. Consult factory.

Power Supply (0-10V dim to 10% Std)

- 29 **Two wire** full range (100-1%) PWM dimming instead (Lutron). **120V only.** Consult factory.
- 39 **Three wire** full range (100-1%) PWM dimming instead (Lutron). Consult factory.
- D1 0-10V 1.0% dimming instead.
- D6 Triac (incandescent) dimming driver instead. 100-10%. 120V only.
- E1 Remote emergency inverter for 100% of rated lumens. Run time: 90+ minutes. 120V or 277V, 60Hz input only. Specify voltage. Not for use with Option -29.

Color (CCT and CRI) - 35K Std.

- 27K Color temperature 2700°K instead.
- 30K Color temperature 3000°K instead.
- 41K Color temperature 4100°K instead.
- HC 90+ CRI instead.

Distributions (WFL Standard)

- NFL Narrow flood distribution.
- MFL Medium flood distribution.

Lens (Prismatic Standard)

- 13 Clear 1/8" polycarbonate added below standard or any optional flat lens.
- 23 Frosted microprismatic glass lens instead. (0.8 LLF)
- CF Custom color filter (Rosco). Specify.
- WA White acrylic (flat) diffuser instead. (0.8 LLF)

Trim (White Standard)

- 31 White acrylic enameled flange. For use with optional trim finishes only.
- 32 White oversize trim ring. Specify O.D.
- 35F Silver acrylic enameled flange.
- 35T Silver acrylic enameled trim instead.
- 37F Dark bronze acrylic enameled flange.
- 37T Dark bronze acrylic enameled trim instead.
- 38F Black acrylic enameled flange.
- 38T Black acrylic enameled trim instead.
- 45 Gasket between trim flange and ceiling.
- 46 Gasket between trim and lens.
- 94 Custom color/finish. Specify. Consult factory.
- BG Anti-microbial Kirlin BioGuard™ white (only) trim finish instead.

Other

- 99 Special modification. Consult factory.

LKR-08055-5000L

PERFORMANCE

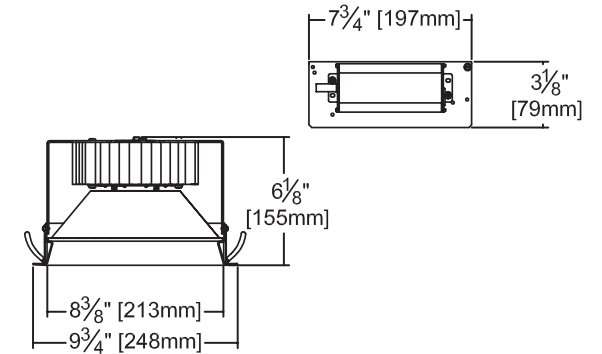
Lumen Output Factors

APPLY THESE FACTORS TO LUMENS SHOWN BELOW

LUMEN SERIES	OUTPUT FACTOR	CFL or MH MEAN LUMENS EQUIVALENT
-5000L	1.000	3x57W CFL 150W MH
-3500L	0.802	2x57W CFL 3x42W CFL 100W MH

Dimensions

Ceiling Cut-out 9" Dia.



Detailed Photometry - Installed Fixture

Photometric testing done in accordance with IESNA LM-79

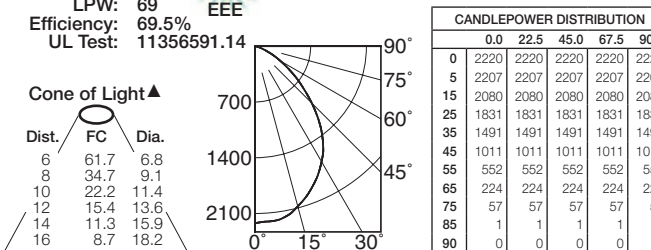
Photometry from I.T.L., Boulder, CO

-5000L STANDARD (WFL)

Lumens: 4134
Beam: ~59°
SC: 1.1
LPW: 69
Efficiency: 69.5%
UL Test: 11356591.14



Total System Watts 59.7

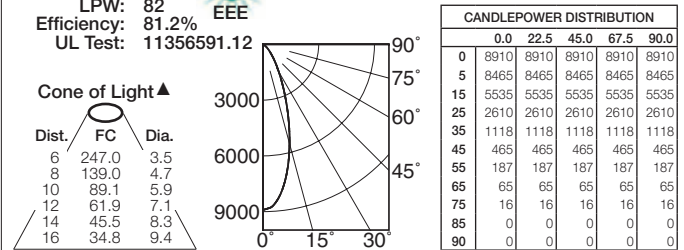


-5000L Option -NFL

Lumens: 4827
Beam: ~33°
SC: 0.6
LPW: 82
Efficiency: 81.2%
UL Test: 11356591.12



Total System Watts 59.0

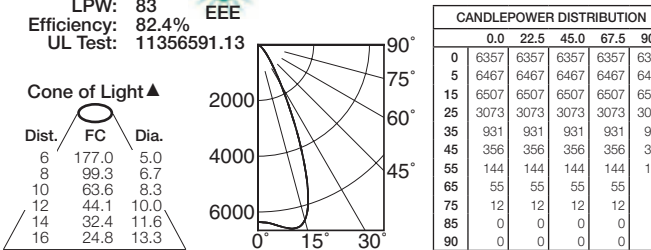


-5000L Option -MFL

Lumens: 4900
Beam: ~45°
SC: 0.8
LPW: 83
Efficiency: 82.4%
UL Test: 11356591.13



Total System Watts 59.4



LM-80 Qualified • LM-79 Certified Photometry

* LED manufacturers maintain a tolerance of ±7% on flux (lumens) and power (electrical) measurements. Kirlin photometrics are actual test data from Independent Testing Laboratories (ITL) where photometry was measured from 5946 lumen (-5000L) light engines (within the established tolerance).

▲ Cone of Light Key
Dia. (in ft.) shown is where FC value is half the FC at nadir.
Dist. Distance (Ft.) from fixture
FC Footcandles at nadir (0°)
Dia. Circle of light at 50% of FC

SUBMITTAL DATA

JOB NAME

TYPE

WATTAGE

VOLTAGE

CATALOG NUMBER

APPROVAL STAMP



CATALOG #	TYPE
JOB NAME	VOLTAGE

LED 6" Downlight Upgrade Kit • UL Wet

10% Dimming • 3 Distributions • 4 CCT • 3-Step Binning
Regressed Lens • White Trim • For Existing Kirlin Housings

Specifications

Optical Assembly

Delivered System Performance*

- Lumen Series: **MUST SPECIFY**
- 6500L: 6500 nominal lumens (74W).
- Distribution: WFL standard.
- Optional: -MFL or -SPT.
- Color temperature: 3500°K standard.
- Optional: -27K, -30K or -41K.
- CRI: 80+. Exceptionally consistent color.
- Optional: -HC (90+).
- LM-80 Qualified LEDs provide up to 60,000 hour life (L70).
- Fully sustainable: removable for servicing.

Thermal Management System

- All aluminum heat sink and components maximize cool operation and long life while minimizing maintenance.

LED Power Supply - Included

- 0-10V CCR dimming standard (100-10%) or see Options.**
- 120-277V / 50-60Hz standard. Load insensitive. Also see Option -97.
- Suitable for outdoor / indoor use: -30°C (-22°F) to 50°C (122°F).

Trim and Lens Assembly

- Seamless tapered aluminum white self-flanged trim (field paintable) with high efficiency reflector above.

Installation (Indoor or Outdoor)

- Simple, secure retention of entire kit into existing Kirlin recessed housing aperture.
- Fully sustainable: Revitalize existing fixtures without disturbing the ceiling.

UL, C-UL (Canada) Classified Kit

- Wet, damp or dry locations, covered ceilings, for use in Kirlin fixtures (UL Listed).
- Suitable for all Kirlin housings with a minimum 6.25" depth x 11.75" square size.

IEC & FCC Compliance

- Meets IEC/EN 60601-1-2 electromagnetic compatibility standard for medical electrical equipment.
- FCC Part 15 certified for EMI/RFI emissions.

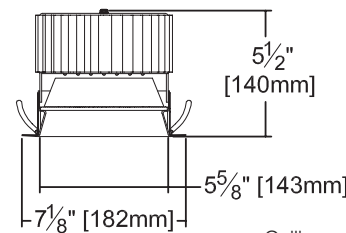
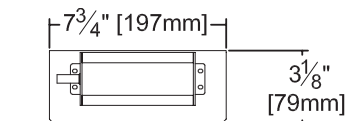
5 YEAR Limited Warranty

- Complete standard fixture.

LKR-06074-6500L



Wide Flood Distribution and 3500°K Standard (or see Options)



Ceiling Cut-out 6 1/2" Dia.

MUST SPECIFY	OPTIONAL	Ordering Example: LKR-06074-6500L-30K-MFL
Product Number	Options	
LKR-06074-6500L	See "Options" below	

Options

Input Power

- 97 Specify other voltage. Consult factory.

Power Supply (0-10V dim to 10% Std)

- 29 **Two wire** full range (100-1%) PWM dimming instead (Lutron). **120V only.** Consult factory. Not for use with Option -EI
- 39 **Three wire** full range (100-1%) PWM dimming instead (Lutron). Consult factory.
- D1 0-10V 1.0% dimming instead.
- D6 Triac (incandescent) dimming driver instead. 100-10%. 120V only.
- EI Remote emergency inverter for 40% of rated lumens. Run time: 90+ minutes. 120 **or** 277V, 60Hz input only. Specify voltage. Not for use with Option -29.

Color (CCT and CRI) - 35K Std.

- 27K Color temperature 2700°K instead.

- 30K Color temperature 3000°K instead.
- 41K Color temperature 4100°K instead.
- HC 90+ CRI instead.

Distributions (WFL Standard)

- MFL Medium flood distribution.
- SPT Spot distribution.

Lens (Prismatic Standard)

- 13 Clear 1/8" polycarbonate added below standard or any optional flat lens.
- 23 Frosted micropismatic glass lens instead. (0.8 LLF)
- CF Custom color filter (Rosco). Specify.
- WA White acrylic (flat) diffuser instead. (0.8 LLF)

Trim (White Standard)

- 31 White acrylic enameled flange. For use with optional trim finishes only.

- 32 White oversize trim ring. Specify O.D.
- 35F Silver acrylic enameled flange.
- 35T Silver acrylic enameled trim instead.
- 37F Dark bronze acrylic enameled flange.
- 37T Dark bronze acrylic enameled trim instead.
- 38F Black acrylic enameled flange.
- 38T Black acrylic enameled trim instead.
- 45 Gasket between trim flange and ceiling.
- 46 Gasket between trim and lens.
- 62 Specular clear self-flanged trim instead.
- 94 Custom color/finish. Specify. Consult factory.
- BG Anti-microbial Kirlin BioGard™ white (only) trim finish instead.

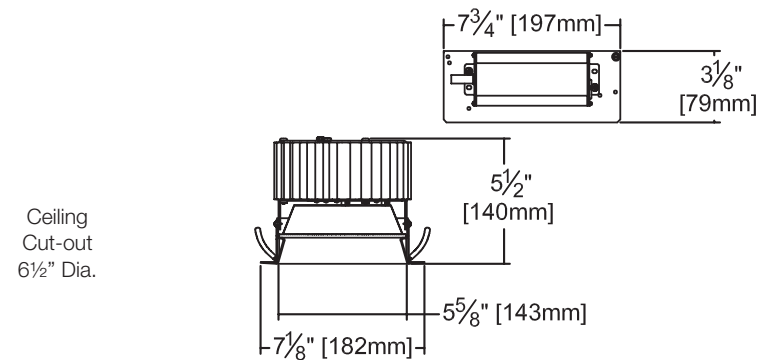
Other

- 99 Special modification. Consult factory.

LKR-06074-6500L

PERFORMANCE

Dimensions



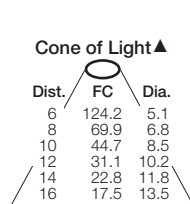
Detailed Photometry - Installed Fixture

Photometric testing done in accordance with IESNA LM-79

Photometry from I.T.L., Boulder, CO

-6500L STANDARD (WFL)

Lumens: 5166
Beam: ~46°
SC: 0.9
LPW: 71
Efficiency: 61.4%
ITL Test: 86322

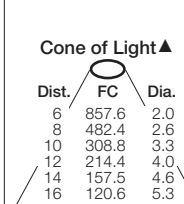


Total System Watts 72.7

	CANDLEPOWER DISTRIBUTION				
	0.0	22.5	45.0	67.5	90.0
0	4472	4472	4472	4472	4472
5	4343	4343	4343	4343	4343
15	3530	3530	3530	3530	3530
25	2673	2673	2673	2673	2673
35	1759	1759	1759	1759	1759
45	1046	1046	1046	1046	1046
55	492	492	492	492	492
65	156	156	156	156	156
75	25	25	25	25	25
85	0	0	0	0	0
90	0	0	0	0	0

-6500L Option -SPT

Lumens: 6354
Beam: ~19°
SC: 0.3
LPW: 87
Efficiency: 79.2%
ITL Test: 86321

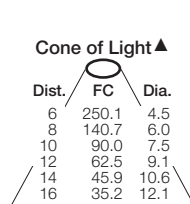


Total System Watts 73.1

	CANDLEPOWER DISTRIBUTION				
	0.0	45.0	90.0	135.0	180.0
0	30875	30875	30875	30875	30875
5	25641	25641	25641	25641	25641
15	7447	7447	7447	7447	7447
25	2197	2197	2197	2197	2197
35	809	809	809	809	809
45	378	378	378	378	378
55	191	191	191	191	191
65	73	73	73	73	73
75	15	15	15	15	15
85	0	0	0	0	0
90	0	0	0	0	0

-6500L Option -MFL

Lumens: 6076
Beam: ~41°
SC: 0.7
LPW: 83
Efficiency: 75.4%
ITL Test: 86320



Total System Watts 73.1

	CANDLEPOWER DISTRIBUTION				
	0.0	22.5	45.0	67.5	90.0
0	9004	9004	9004	9004	9004
5	8951	8951	8951	8951	8951
15	7643	7643	7643	7643	7643
25	3579	3579	3579	3579	3579
35	1163	1163	1163	1163	1163
45	507	507	507	507	507
55	237	237	237	237	237
65	90	90	90	90	90
75	15	15	15	15	15
85	0	0	0	0	0
90	0	0	0	0	0

LM-80 Qualified • LM-79 Certified Photometry

* LED manufacturers maintain a tolerance of ±7% on flux (lumens) and power (electrical) measurements. Kirlin photometrics are actual test data from Independent Testing Laboratories (ITL) where photometry was measured from 8024 lumen (-6500L) light engines (within the established tolerance).

▲ Cone of Light Key
Dia. (in ft.) shown is where FC value is half the FC at nadir.

Dist. Distance (Ft.) from fixture
FC Footcandles at nadir (0°)
Dia. Circle of light at 50% of FC

SUBMITTAL DATA

JOB NAME

TYPE

WATTAGE

VOLTAGE

CATALOG NUMBER

APPROVAL STAMP



CATALOG #	TYPE
JOB NAME	VOLTAGE

LED 7" Downlight Upgrade Kit • UL Wet 10% Dimming • 3 Distributions • 4 CCT • 3-Step Binning Regressed Lens • White Trim • For Existing Kirlin Housings

Specifications

Optical Assembly Delivered System Performance*

- Lumen Series: **MUST SPECIFY**
-6500L: 6500 nominal lumens (74W).
- Distribution: WFL standard.
Optional: -MFL or -SPT.
- Color temperature: 3500°K standard.
Optional: -27K, -30K or -41K.
- CRI: 80+. Exceptionally consistent color.
Optional: -HC (90+).
- LM-80 Qualified LEDs provide up to 60,000 hour life (L70).
- Fully sustainable: removable for servicing.

Thermal Management System

- All aluminum heat sink and components maximize cool operation and long life while minimizing maintenance.

LED Power Supply - Included

- 0-10V CCR dimming standard (100-10%) or see Options.**
- 120-277V / 50-60Hz standard. Load insensitive. Also see Option -97,
- Suitable for outdoor / indoor use:
-30°C (-22°F) to 50°C (122°F).

Trim and Lens Assembly

- Seamless tapered aluminum white self-flanged trim (field paintable) with high efficiency reflector above.
- Regressed tempered prismatic lens.
- Simple, secure retention of entire kit into existing Kirlin recessed housing aperture.
- Fully sustainable: Revitalize existing fixtures without disturbing the ceiling.

Installation (Indoor or Outdoor)

- Simple, secure retention of entire kit into existing Kirlin recessed housing aperture.
- Fully sustainable: Revitalize existing fixtures without disturbing the ceiling.
- UL, C-UL (Canada) Classified Kit**
- Wet, damp or dry locations, covered ceilings, for use in Kirlin fixtures (UL Listed).
- Suitable for all Kirlin housings with a minimum 6.25" depth x 11.75" square size.

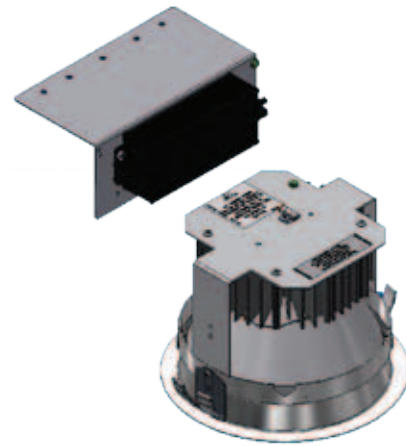
IEC & FCC Compliance

- Meets IEC/EN 60601-1-2 electromagnetic compatibility standard for medical electrical equipment.
- FCC Part 15 certified for EMI/RFI emissions.

5 YEAR
Limited Warranty

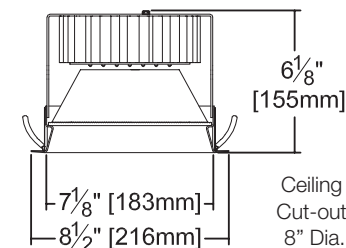
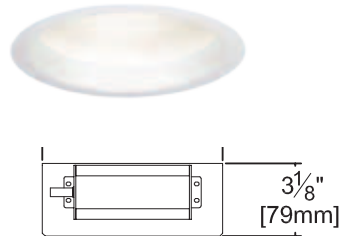
- Complete standard fixture.

LKR-07074-6500L



Wide Flood Distribution and 3500°K Standard

(or see Options)



MUST SPECIFY	OPTIONAL	Ordering Example: LKR-07074-6500L-30K-MFL
Product Number	Options	
LKR-07074-6500L	See "Options" below	

Options

Input Power

- 97 Specify other voltage. Consult factory.

Power Supply (0-10V dim to 10% Std)

- 29 **Two wire** full range (100-1%) PWM dimming instead (Lutron). **120V only.** Consult factory.
- 39 **Three wire** full range (100-1%) PWM dimming instead (Lutron). Consult factory.
- D1 0-10V 1.0% dimming instead.
- D6 Triac (incandescent) dimming driver instead. 100-10%. 120V only.
- E1 Remote emergency inverter for 100% of rated lumens. Run time: 90+ minutes. 120 or 277V, 60Hz input only. Specify voltage. Not for use with Option -29.

Color (CCT and CRI) - 35K Std.

- 27K Color temperature 2700°K instead.

- 30K Color temperature 3000°K instead.
- 41K Color temperature 4100°K instead.
- HC 90+ CRI instead.

Distributions (WFL Standard)

- MFL Medium flood distribution.
- SPT Spot distribution.

Lens (Prismatic Standard)

- 13 Clear 1/8" polycarbonate added below standard or any optional flat lens.
- 23 Frosted microprismatic glass lens instead. (0.8 LLF)
- CF Custom color filter (Rosco). Specify.
- WA White acrylic (flat) diffuser instead. (0.8 LLF)

Trim (White Standard)

- 31 White acrylic enameled flange. For use with optional trim finishes only.

- 32 White oversize trim ring. Specify O.D.
- 35F Silver acrylic enameled flange.
- 35T Silver acrylic enameled trim instead.
- 37F Dark bronze acrylic enameled flange.
- 37T Dark bronze acrylic enameled trim instead.
- 38F Black acrylic enameled flange.
- 38T Black acrylic enameled trim instead.
- 45 Gasket between trim flange and ceiling.
- 46 Gasket between trim and lens.
- 62 Specular clear self-flanged trim instead.
- 94 Custom color/finish. Specify. Consult factory.
- BG Anti-microbial Kirlin BioGard™ white (only) trim finish instead.

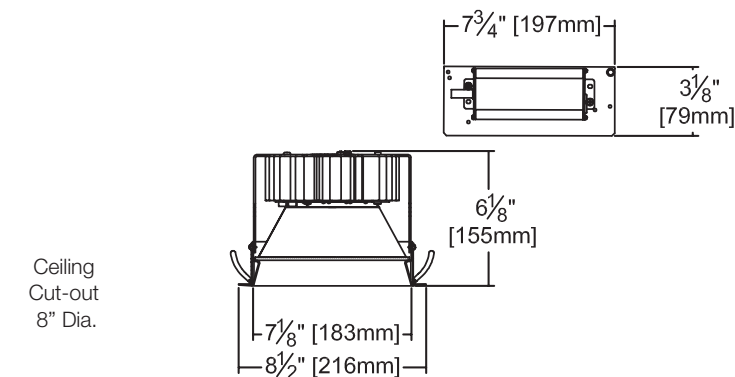
Other

- 99 Special modification. Consult factory.

LKR-07074-6500L

PERFORMANCE

Dimensions



Ceiling
Cut-out
8" Dia.

Detailed Photometry - Installed Fixture

Photometric testing done in accordance with IESNA LM-79

Photometry from I.T.L., Boulder, CO

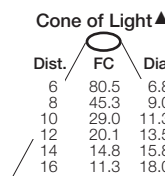
-6500L STANDARD (WFL)

Lumens: 5676
Beam: ~59°
SC: 1.1
LPW: 78
Efficiency: 70.7%
ITL Test: 85870



Total System Watts 72.9

		CANDLEPOWER DISTRIBUTION				
		0.0	22.5	45.0	67.5	90.0
0	2897	2897	2897	2897	2897	2897
5	2890	2890	2890	2890	2890	2890
15	2687	2687	2687	2687	2687	2687
25	2335	2335	2335	2335	2335	2335
35	1968	1968	1968	1968	1968	1968
45	1407	1407	1407	1407	1407	1407
55	834	834	834	834	834	834
65	392	392	392	392	392	392
75	100	100	100	100	100	100
85	0	0	0	0	0	0
90	0	0	0	0	0	0



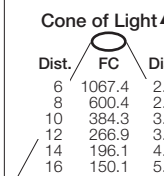
-6500L Option -SPT

Lumens: 6774
Beam: ~19°
SC: 0.3
LPW: 93
Efficiency: 84.4%
ITL Test: 85868



Total System Watts 73.0

		CANDLEPOWER DISTRIBUTION				
		0.0	22.5	45.0	67.5	90.0
0	38428	38428	38428	38428	38428	38428
5	32327	32327	32327	32327	32327	32327
15	7937	7937	7937	7937	7937	7937
25	1940	1940	1940	1940	1940	1940
35	678	678	678	678	678	678
45	321	321	321	321	321	321
55	161	161	161	161	161	161
65	59	59	59	59	59	59
75	11	11	11	11	11	11
85	0	0	0	0	0	0
90	0	0	0	0	0	0



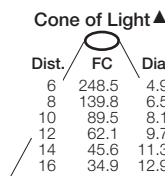
-6500L Option -MFL

Lumens: 6482
Beam: ~44°
SC: 0.8
LPW: 89
Efficiency: 80.8%
ITL Test: 85869



Total System Watts 72.9

		CANDLEPOWER DISTRIBUTION				
		0.0	22.5	45.0	67.5	90.0
0	8945	8945	8945	8945	8945	8945
5	9039	9056	9063	9032	9010	
15	8291	8780	9325	8929	8535	
25	3611	3947	4240	3867	3608	
35	1092	1116	1159	1111	1073	
45	425	450	484	447	414	
55	200	207	214	206	201	
65	90	90	90	90	89	
75	21	21	21	21	21	
85	0	0	0	0	0	
90	0	0	0	0	0	



LM-80 Qualified • LM-79 Certified Photometry

* LED manufacturers maintain a tolerance of ±7% on flux (lumens) and power (electrical) measurements. Kirlin photometrics are actual test data from Independent Testing Laboratories (ITL) where photometry was measured from 8024 lumen (-6500L) light engines (within the established tolerance).

▲ Cone of Light Key
Dia. (in ft.) shown is where FC value is half the FC at nadir.

Dist. Distance (Ft.) from fixture
FC Footcandles at nadir (0°)
Dia. Circle of light at 50% of FC

SUBMITTAL DATA

JOB NAME

TYPE

WATTAGE

VOLTAGE

CATALOG NUMBER

APPROVAL STAMP



LIMITED WARRANTY: CATALOGED KIRLIN FIXTURES ARE WARRANTED FREE OF DEFECTS IN WORKMANSHIP OR MATERIAL FOR FIVE YEARS FROM DATE OF PURCHASE. INSTALLATION IN NORMAL USE. Manufacturer at the option will replace or repair such fixture or refund the purchase price on presentation of proof of purchase and defective fixture at the office of manufacturer within five years of original shipment. Liability of manufacturer is limited to the foregoing, and manufacturer shall not be liable for any other damages, direct or indirect, sustained or suffered by purchaser or any person. This warranty is applied to the buyer on behalf of all other warranties, expressed or implied. Seller does not warrant as to mechanical or electrical safety or fitness for a particular use, nor will any oral statement, brochure or other literature constitute a warranty or amend this specific warranty. Manufacturer's name, address of the fixture, importer/reseller, or repair, or modification of the fixture without prior written authorization from the manufacturer will void the warranty void.

CATALOG #	TYPE
JOB NAME	VOLTAGE

LED 8" Downlight Upgrade Kit • UL Wet

10% Dimming • 3 Distributions • 4 CCT • 3-Step Binning
Regressed Lens • White Trim • For Existing Kirlin Housings

Specifications

Optical Assembly Delivered System Performance*

- Lumen Series: **MUST SPECIFY**
-6500L: 6500 nominal lumens (74W).
- Distribution: WFL standard.
Optional: -MFL or -SPT.
- Color temperature: 3500°K standard.
Optional: -27K, -30K or -41K.
- CRI: 80+. Exceptionally consistent color.
Optional: -HC (90+).
- LM-80 Qualified LEDs provide up to 60,000 hour life (L70).
- Fully sustainable: removable for servicing.

Thermal Management System

- All aluminum heat sink and components maximize cool operation and long life while minimizing maintenance.

LED Power Supply - Included

- 0-10V CCR dimming standard (100-10%) or see Options.**
- 120-277V / 50-60Hz standard. Load insensitive. Also see Option -97.
- Suitable for outdoor / indoor use: -30°C (-22°F) to 50°C (122°F).

Trim and Lens Assembly

- Seamless tapered aluminum white self-flanged trim (field paintable) with high efficiency reflector above.
- Regressed tempered prismatic lens.
- Simple, secure retention of entire kit into existing Kirlin recessed housing aperture.
- Fully sustainable: Revitalize existing fixtures without disturbing the ceiling.

Installation (Indoor or Outdoor)

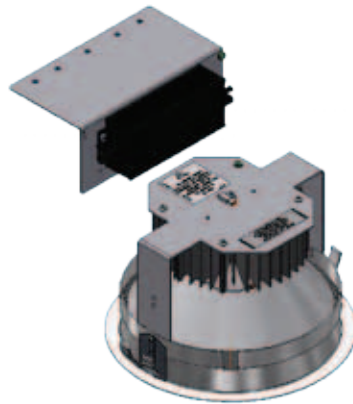
- Wet, damp or dry locations, covered ceilings, for use in Kirlin fixtures (UL Listed).
- Suitable for all Kirlin housings with a minimum 6.25" depth x 11.75" square size.

UL, C-UL (Canada) Classified Kit

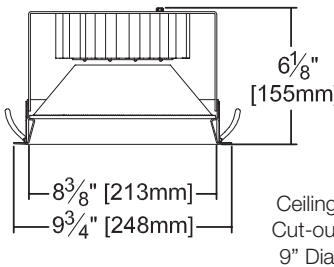
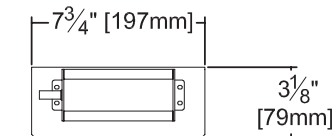
- Meets IEC/EN 60601-1-2 electromagnetic compatibility standard for medical electrical equipment.
- FCC Part 15 certified for EMI/RFI emissions.

5 Year Limited Warranty
• Complete standard fixture.

LKR-08074-6500L



Wide Flood Distribution and 3500°K Standard (or see Options)



MUST SPECIFY	OPTIONAL	Ordering Example: LKR-08074-6500L-30K-MFL
Product Number	Options	
LKR-08074-6500L	See "Options" below	

Options

Input Power

- 97 Specify other voltage. Consult factory.

Power Supply (0-10V dim to 10% Std)

- 29 **Two wire** full range (100-1%) PWM dimming instead (Lutron). **120V only.** Consult factory.
- 39 **Three wire** full range (100-1%) PWM dimming instead (Lutron). Consult factory.
- D1 0-10V 1.0% dimming instead.
- D6 Triac (incandescent) dimming driver instead. 100-10%. 120V only.
- EI Remote emergency inverter for 100% of rated lumens. Run time: 90+ minutes. 120 or 277V, 60Hz input only. Specify voltage. Not for use with Option -29.

Color (CCT and CRI) - 35K Std.

- 27K Color temperature 2700°K instead.

- 30K Color temperature 3000°K instead.
- 41K Color temperature 4100°K instead.
- HC 90+ CRI instead.

Distributions (WFL Standard)

- MFL Medium flood distribution.
- SPT Spot distribution.

Lens (Prismatic Standard)

- 13 Clear 1/8" polycarbonate added below standard or any optional flat lens.
- 23 Frosted micropismatic glass lens instead. (0.8 LLF)
- CF Custom color filter (Rosco). Specify.
- WA White acrylic (flat) diffuser instead. (0.8 LLF)

Trim (White Standard)

- 31 White acrylic enameled flange. For use with optional trim finishes only.

- 32 White oversize trim ring. Specify O.D.
- 35F Silver acrylic enameled flange.
- 35T Silver acrylic enameled trim instead.
- 37F Dark bronze acrylic enameled flange.
- 37T Dark bronze acrylic enameled trim instead.
- 38F Black acrylic enameled flange.
- 38T Black acrylic enameled trim instead.
- 45 Gasket between trim flange and ceiling.
- 46 Gasket between trim and lens.
- 94 Custom color/finish. Specify. Consult factory.
- BG Anti-microbial Kirlin BioGard™ white (only) trim finish instead.

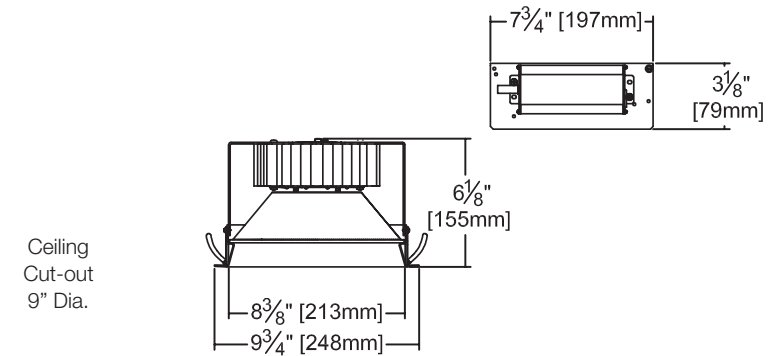
Other

- 99 Special modification. Consult factory.

LKR-08074-6500L

PERFORMANCE

Dimensions



Detailed Photometry - Installed Fixture

Photometric testing done in accordance with IESNA LM-79

Photometry from I.T.L., Boulder, CO

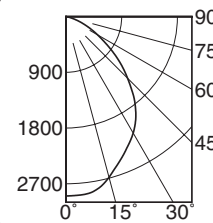
-6500L STANDARD (WFL)

Lumens: 5676
Beam: ~59°
SC: 1.1
LPW: 78
Efficiency: 70.7%
ITL Test: 85870



Cone of Light ▲

Dist.	FC	Dia.
6	80.5	6.8
8	45.3	9.0
10	29.0	11.3
12	20.1	13.5
14	14.8	15.8
16	11.3	18.0



Total System Watts 72.9

CANDLEPOWER DISTRIBUTION					
	0.0	22.5	45.0	67.5	90.0
0	2897	2897	2897	2897	2897
5	2890	2890	2890	2890	2890
15	2687	2687	2687	2687	2687
25	2335	2335	2335	2335	2335
35	1968	1968	1968	1968	1968
45	1407	1407	1407	1407	1407
55	834	834	834	834	834
65	392	392	392	392	392
75	100	100	100	100	100
85	0	0	0	0	0
90	0	0	0	0	0

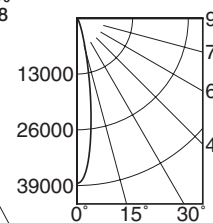
-6500L Option -SPT

Lumens: 6774
Beam: ~19°
SC: 0.3
LPW: 93
Efficiency: 84.4%
ITL Test: 85868



Cone of Light ▲

Dist.	FC	Dia.
6	1067.4	2.0
8	600.4	2.6
10	384.3	3.3
12	266.9	3.9
14	196.1	4.6
16	150.1	5.3



Total System Watts 73.0

CANDLEPOWER DISTRIBUTION					
	0.0	22.5	45.0	67.5	90.0
0	38428	38428	38428	38428	38428
5	32327	32327	32327	32327	32327
15	7937	7937	7937	7937	7937
25	1940	1940	1940	1940	1940
35	678	678	678	678	678
45	321	321	321	321	321
55	161	161	161	161	161
65	59	59	59	59	59
75	11	11	11	11	11
85	0	0	0	0	0
90	0	0	0	0	0

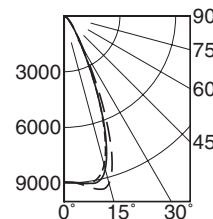
-6500L Option -MFL

Lumens: 6482
Beam: ~44°
SC: 0.8
LPW: 89
Efficiency: 80.8%
ITL Test: 85869



Cone of Light ▲

Dist.	FC	Dia.
6	248.5	4.9
8	139.8	6.5
10	89.5	8.1
12	62.1	9.7
14	45.6	11.3
16	34.9	12.9



Total System Watts 72.9

CANDLEPOWER DISTRIBUTION					
	0.0	22.5	45.0	67.5	90.0
0	8945	8945	8945	8945	8945
5	9039	9056	9063	9032	9010
15	8291	8780	9325	8929	8535
25	3611	3947	4240	3867	3608
35	1092	1116	1159	1111	1073
45	425	450	484	447	414
55	200	207	214	206	201
65	90	90	90	90	89
75	21	21	21	21	21
85	0	0	0	0	0
90	0	0	0	0	0

LM-80 Qualified • LM-79 Certified Photometry

* LED manufacturers maintain a tolerance of ±7% on flux (lumens) and power (electrical) measurements. Kirlin photometrics are actual test data from Independent Testing Laboratories (ITL) where photometry was measured from 8024 lumen (-6500L) light engines (within the established tolerance).

▲ Cone of Light Key
Dia. (in ft.) shown is where FC value is half the FC at nadir.

Dist. Distance (Ft.) from fixture
FC Footcandles at nadir (0°)
Dia. Circle of light at 50% of FC

SUBMITTAL DATA

JOB NAME

TYPE

WATTAGE

VOLTAGE

CATALOG NUMBER

APPROVAL STAMP



CATALOG #	TYPE
JOB NAME	VOLTAGE

LED 4" Downlight Upgrade Kit • UL • Type IC

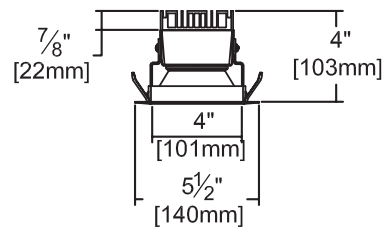
1% Dimming • WFL • 3 CCT • White Trim • 3-Step Binning Integrated Module • For Existing Kirlin Housings



LKR-04120-2000L
LKR-04120-1500L
LKR-04120-1100L



Wide Flood Distribution and 3500°K Standard (or see Options)



Ceiling Cut-out 5" Dia.

-2000L Version Shown
Lower Lumen Versions are 3-1/8" Depth

Projected L70** for LEDs in Kirlin Upgrade Kit	
In Open Plenum	50,000 hours
In Insulation (Type IC)	50,000 hours

**Hours at 70% lumen maintenance

Specifications

Delivered System Performance*

- Lumen Series: **MUST SPECIFY**
- 2000L: 2000 nominal lumens (20W).
- 1500L: 1500 nominal lumens (15W).
- 1100L: 1200 nominal lumens (11W).
- Distribution: WFL.
- Color temperature: 3500°K standard. Optional: -30K or -41K.
- CRI: 80+. Exceptionally consistent color.
- 50,000 hour life (L70**).
- Fully sustainable: removable for servicing.

Thermal Management System

- All aluminum heat sink, components and housing maximize cool operation and long life while minimizing maintenance.

LED Power Supply - Integral

- 0-10V linear dimming standard (100-1%).**
- 120-277V / 50-60Hz standard. Load insensitive or see Option -97.
- Suitable for outdoor / indoor use: -30°C (-22°F) to 60°C (140°F).

Trim Assembly

- White aluminum self-flanged downlight trim. Other finishes available. See Options.

Installation (Indoor or Outdoor)

- Simple, secure retention of entire kit into existing Kirlin recessed housing aperture.
- Revitalize existing fixtures without disturbing the ceiling.
- Modular kit is conveniently serviceable through aperture.

UL C-UL (Canada) Classified Kit

- Type IC, wet, damp or dry locations, covered ceilings, for use in Kirlin fixtures (UL Classified).
- Suitable for all Kirlin housings with a minimum 5" depth x 11.75" square size.

IEC & FCC Compliance

- Meets IEC/EN 60601-1-2 electromagnetic compatibility standard for medical electrical equipment.
- FCC Part 15 certified for EMI/RFI emissions.

5 Year Limited Warranty
• Complete kit.

MUST SPECIFY	OPTIONAL	Ordering Example: LKR-04120-2000L-30K-70
Product Number	Options	
LKR-04120-2000L LKR-04120-1500L LKR-04120-1100L	See "Options" below	

Options

LED Power Supply

- 97 Specify other voltage. Consult factory.
- EI Remote emergency inverter for 100% of rated lumens. Run time: 90+ minutes. 120 or 277V, 60Hz input only. Specify voltage.

Color Temperature (CCT) - 35K Std.

- 30K Color temperature 3000°K instead.
- 41K Color temperature 4100°K instead.

Trim (White Standard)

- 31 White acrylic enameled flange. For use with optional trim finishes only.
- 32 White oversize trim ring. Specify O.D.
- 35F Silver acrylic enameled flange.

- 35T Silver acrylic enameled trim instead.
- 37F Dark bronze acrylic enameled flange.
- 37T Dark bronze acrylic enameled trim instead.
- 38F Black acrylic enameled flange.
- 38T Black acrylic enameled trim instead.
- 45 Gasket between trim flange and ceiling.
- 70 SofTex™ clear self-flanged trim instead.
- 94 Custom color/finish. Specify. Consult factory.
- BG Anti-microbial Kirlin BioGuard™ white (only) trim finish instead.
- CF Custom color filter (Rosco). Specify.

Other

- 99 Special modification. Consult factory.

LKR-04120-2000L

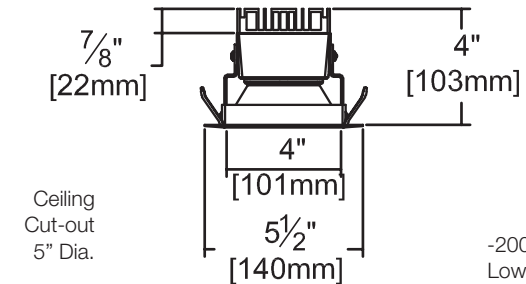
PERFORMANCE

Lumen Output Factors

APPLY THESE FACTORS TO LUMENS SHOWN BELOW

LUMEN SERIES	OUTPUT FACTOR	CFL or MH MEAN LUMENS EQUIVALENT
-2000L	1.00	70W MH
-1500L	0.75	39-50W MH
-1100L	0.55	1x42W CFL

Dimensions



Ceiling Cut-out 5" Dia.

-2000L Version Shown
Lower Lumen Versions are 3-1/8" Depth

Detailed Photometry - Installed Fixture

Photometric testing done in accordance with IESNA LM-79

Photometry from I.T.L., Boulder, CO

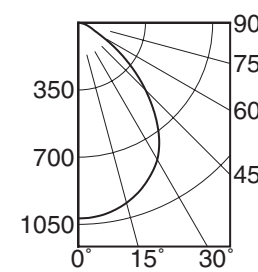
-2000L (WFL)

Lumens: 1988
Beam: ~135°
SC: 1.2
LPW: 98
Efficiency: 99.4%
ITL Test: 90404



Dist.	FC	Dia.
6	28.3	7.2
8	15.9	9.6
10	10.2	12.0
12	7.1	14.4
14	5.2	16.8
16	4.0	19.2

Total System Watts 20.3



	CANDLEPOWER DISTRIBUTION				
	0.0	22.5	45.0	67.5	90.0
0	1019	1019	1019	1019	1019
5	1014	1014	1014	1014	1014
15	971	971	971	971	971
25	883	883	883	883	883
35	734	734	734	734	734
45	495	495	495	495	495
55	249	249	249	249	249
65	88	88	88	88	88
75	43	43	43	43	43
85	10	10	10	10	10
90	0	0	0	0	0

LM-80 Qualified • LM-79 Certified Photometry

* LED manufacturers maintain a tolerance of ±7% on flux (lumens) and power (electrical) measurements. Kirlin photometrics are actual test data from Independent Testing Laboratories (ITL) where photometry was measured from 2000 lumen (-2000L) light engines (within the established tolerance).

▲ Cone of Light Key
Dia. (in ft.) shown is where FC value is half the FC at nadir.
FC Footcandles at nadir (0°)
Dia. Circle of light at 50% of FC

SUBMITTAL DATA

JOB NAME

TYPE

VOLTAGE

CATALOG NUMBER

APPROVAL STAMP



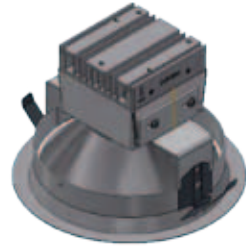
CATALOG #	TYPE
JOB NAME	VOLTAGE

LED 6" Downlight Upgrade Kit • UL • Type IC

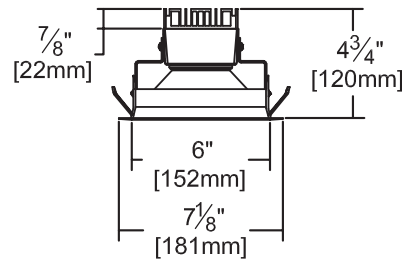
1% Dimming • WFL • 3 CCT • White Trim • 3-Step Binning Integrated Module • For Existing Kirlin Housings



LKR-06120-2000L
LKR-06120-1500L
LKR-06120-1100L



Wide Flood Distribution
and **3500°K** Standard
(or see Options)



Ceiling Cut-out 6 1/2" Dia.

-2000L Version Shown
Lower Lumen Versions
are 3-1/8" Depth

Projected L70** for LEDs in Kirlin Upgrade Kit	
In Open Plenum	50,000 hours
In Insulation (Type IC)	50,000 hours

**Hours at 70% lumen maintenance

Specifications

Delivered System Performance*

- Lumen Series: **MUST SPECIFY**
- 2000L: 2000 nominal lumens (20W).
- 1500L: 1500 nominal lumens (15W).
- 1100L: 1200 nominal lumens (11W).
- Distribution: WFL.
- Color temperature: 3500°K standard. Optional: -30K or -41K.
- CRI: 80+. Exceptionally consistent color.
- 50,000 hour life (L70**).
- Fully sustainable: removable for servicing.

Thermal Management System

- All aluminum heat sink, components and housing maximize cool operation and long life while minimizing maintenance.

LED Power Supply - Integral

- 0-10V linear dimming standard (100-1%).**
- 120-277V / 50-60Hz standard. Load insensitive or see Option -97.
- Suitable for outdoor / indoor use: -30°C (-22°F) to 60°C (140°F).

Trim Assembly

- White aluminum self-flanged downlight trim. Other finishes available. See Options.

Installation (Indoor or Outdoor)

- Simple, secure retention of entire kit into existing Kirlin recessed housing aperture.
- Revitalize existing fixtures without disturbing the ceiling.
- Modular kit is conveniently serviceable through aperture.

UL, C-UL (Canada) Classified Kit

- Type IC, wet, damp or dry locations, covered ceilings, for use in Kirlin fixtures (UL Classified).
- Suitable for all Kirlin housings with a minimum 5" depth x 11.75" square size.

IEC & FCC Compliance

- Meets IEC/EN 60601-1-2 electromagnetic compatibility standard for medical electrical equipment.
- FCC Part 15 certified for EMI/RFI emissions.

5 Year
FIVE YEAR
Limited Warranty

- Complete kit.

MUST SPECIFY	OPTIONAL	Ordering Example: LKR-06120-2000L-30K-70
Product Number	Options	
LKR-06120-2000L LKR-06120-1500L LKR-06120-1100L	See "Options" below	

Options

LED Power Supply

- 97 Specify other voltage. Consult factory.
- EI Remote emergency inverter for 100% of rated lumens. Run time: 90+ minutes. 120 or 277V, 60Hz input only. Specify voltage.

Color Temperature (CCT) - 35K Std.

- 30K Color temperature 3000°K instead.
- 41K Color temperature 4100°K instead.

Trim (White Standard)

- 31 White acrylic enameled flange. For use with optional trim finishes only.
- 32 White oversize trim ring. Specify O.D.
- 35F Silver acrylic enameled flange.

- 35T Silver acrylic enameled trim instead.
- 37F Dark bronze acrylic enameled flange.
- 37T Dark bronze acrylic enameled trim instead.
- 38F Black acrylic enameled flange.
- 38T Black acrylic enameled trim instead.
- 45 Gasket between trim flange and ceiling.
- 70 SofTex™ clear self-flanged trim instead.
- 94 Custom color/finish. Specify. Consult factory.
- BG Anti-microbial Kirlin BioGard™ white (only) trim finish instead.
- CF Custom color filter (Rosco). Specify.

Other

- 99 Special modification. Consult factory.

LKR-06120-2000L

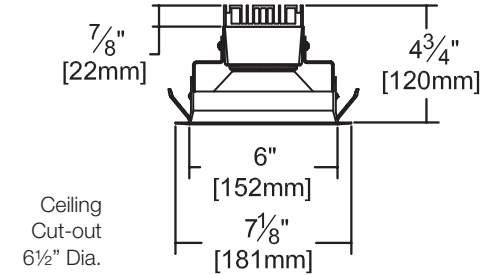
PERFORMANCE

Lumen Output Factors

APPLY THESE FACTORS TO LUMENS SHOWN BELOW

LUMEN SERIES	OUTPUT FACTOR	CFL or MH MEAN LUMENS EQUIVALENT
-2000L	1.00	70W MH
-1500L	0.75	39-50W MH
-1100L	0.55	1x42W CFL

Dimensions



Ceiling Cut-out 6 1/2" Dia.

-2000L Version Shown
Lower Lumen Versions
are 3-1/8" Depth

Detailed Photometry - Installed Fixture

Photometric testing done in accordance with IESNA LM-79

Photometry from I.T.L., Boulder, CO

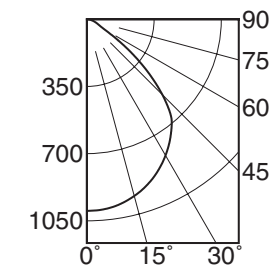
-2000L (WFL)

Lumens: 1984
Beam: ~136°
SC: 1.2
LPW: 100
Efficiency: 99.2%
ITL Test: 90405



Dist.	FC	Dia.
6	27.7	7.3
8	15.6	9.8
10	10.0	12.2
12	6.9	14.7
14	5.1	17.1
16	3.9	19.5

Total System Watts 19.9



	CANDLEPOWER DISTRIBUTION				
	0.0	22.5	45.0	67.5	90.0
0	998	998	998	998	998
5	994	994	994	994	994
15	953	953	953	953	953
25	873	873	873	873	873
35	757	757	757	757	757
45	556	556	556	556	556
55	226	226	226	226	226
65	67	67	67	67	67
75	33	33	33	33	33
85	9	9	9	9	9
90	0	0	0	0	0

LM-80 Qualified • LM-79 Certified Photometry

* LED manufacturers maintain a tolerance of ±7% on flux (lumens) and power (electrical) measurements. Kirlin photometrics are actual test data from Independent Testing Laboratories (ITL) where photometry was measured from 2000 lumen (-2000L) light engines (within the established tolerance).

▲ Cone of Light Key
Dia. (in ft.) shown is where FC value is half the FC at nadir.

Dist. Distance (Ft.) from fixture
FC Footcandles at nadir (0°)
Dia. Circle of light at 50% of FC

SUBMITTAL DATA

JOB NAME

TYPE

VOLTAGE

CATALOG NUMBER

APPROVAL STAMP

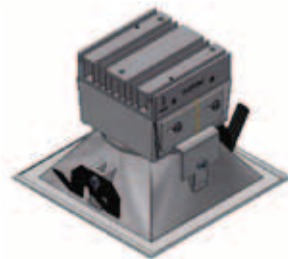


CATALOG #	TYPE
JOB NAME	VOLTAGE

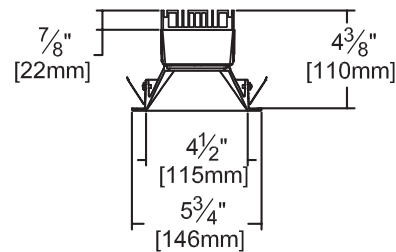
LED 4" Square Upgrade Kit • UL • Type IC

1% Dimming • WFL • 3 CCT • White Trim • 3-Step Binning Integrated Module • For Existing Kirlin Housings

LKS-04120-2000L
LKS-04120-1500L
LKS-04120-1100L



Wide Flood Distribution
and **3500°K** Standard
(or see Options)



Ceiling Cut-out 5 1/4" Sq.

-2000L Version Shown
Lower Lumen Versions
are 3-7/8" Depth

Specifications

Delivered System Performance*

- Lumen Series: **MUST SPECIFY**
- 2000L: 2000 nominal lumens (20W).
- 1500L: 1500 nominal lumens (15W).
- 1100L: 1200 nominal lumens (11W).
- Distribution: WFL.
- Color temperature: 3500°K standard. Optional: -30K or -41K.
- CRI: 80+. Exceptionally consistent color.
- 50,000 hour life (L70**).
- Fully sustainable: removable for servicing.

Thermal Management System

- All aluminum heat sink, components and housing maximize cool operation and long life while minimizing maintenance.

LED Power Supply - Integral

- 0-10V linear dimming standard (100-1%).**
- 120-277V / 50-60Hz standard. Load insensitive or see Option -97.
- Suitable for outdoor / indoor use: -30°C (-22°F) to 60°C (140°F).

Trim Assembly

- White aluminum self-flanged downlight trim. Other finishes available. See Options.

Installation (Indoor or Outdoor)

- Simple, secure retention of entire kit into existing Kirlin recessed housing aperture.
- Revitalize existing fixtures without disturbing the ceiling.
- Modular kit is conveniently serviceable through aperture.

UL, C-UL (Canada) Classified Kit

- Type IC, wet, damp or dry locations, covered ceilings, for use in Kirlin fixtures (UL Classified).
- Suitable for all Kirlin housings with a minimum 5" depth x 11.75" square size.

IEC & FCC Compliance

- Meets IEC/EN 60601-1-2 electromagnetic compatibility standard for medical electrical equipment.
- FCC Part 15 certified for EMI/RFI emissions.

5 Year **FIVE YEAR**
Limited Warranty

- Complete kit.

MUST SPECIFY	OPTIONAL	Ordering Example:
Product Number	Options	
LKS-04120-2000L LKS-04120-1500L LKS-04120-1100L	See "Options" below	LKS-04120-2000L-30K-35T

Options

LED Power Supply

- 97 Specify other voltage. Consult factory.
- EI Remote emergency inverter for 100% of rated lumens. Run time: 90+ minutes. 120 or 277V, 60Hz input only. Specify voltage.

Color Temperature (CCT) - 35K Std.

- 30K Color temperature 3000°K instead.
- 41K Color temperature 4100°K instead.

Trim (White Standard)

- 32 White oversize trim ring. Specify O.D.
- 35F Silver acrylic enameled flange.
- 35T Silver acrylic enameled trim instead.

- 37F Dark bronze acrylic enameled flange.
- 37T Dark bronze acrylic enameled trim instead.
- 38F Black acrylic enameled flange.
- 38T Black acrylic enameled trim instead.
- 45 Gasket between trim flange and ceiling.
- 94 Custom color/finish. Specify. Consult factory.
- BG Anti-microbial Kirlin BioGard™ white (only) trim finish instead.
- CF Custom color filter (Rosco). Specify.

Other

- 99 Special modification. Consult factory.

Projected L70** for LEDs in Kirlin Upgrade Kit	
In Open Plenum	50,000 hours
In Insulation (Type IC)	50,000 hours

**Hours at 70% lumen maintenance

LKS-04120-2000L

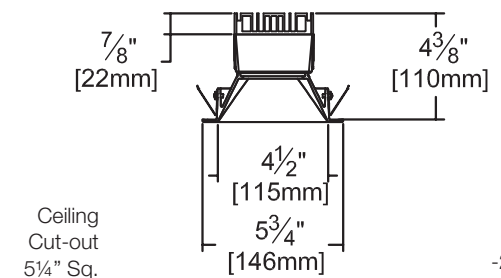
PERFORMANCE

Lumen Output Factors

APPLY THESE FACTORS TO LUMENS SHOWN BELOW

LUMEN SERIES	OUTPUT FACTOR	CFL or MH MEAN LUMENS EQUIVALENT
-2000L	1.00	70W MH
-1500L	0.75	39-50W MH
-1100L	0.55	1x42W CFL

Dimensions



Ceiling
Cut-out
5 1/4" Sq.

-2000L Version Shown
Lower Lumen Versions
are 3-7/8" Depth

Detailed Photometry - Installed Fixture

Photometric testing done in accordance with IESNA LM-79

Photometry from I.T.L., Boulder, CO

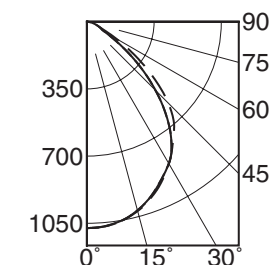
-2000L (WFL)

Lumens: 2087
Beam: ~61°
SC: 1.2
LPW: 103
Efficiency: 104.4%
ITL Test: 90891



Dist.	FC	Dia.
6	29.9	7.1
8	16.8	9.5
10	10.8	11.9
12	7.5	14.2
14	5.5	16.6
16	4.2	19.0

Total System Watts 20.2



	CANDLEPOWER DISTRIBUTION				
	0.0	22.5	45.0	67.5	90.0
0	1075	1075	1075	1075	1075
5	1070	1069	1070	1069	1069
15	1017	1019	1021	1019	1017
25	911	913	920	915	912
35	767	780	779	781	768
45	503	544	599	543	506
55	215	259	305	259	218
65	79	79	89	79	80
75	38	40	39	40	38
85	10	10	10	10	9
90	0	0	0	0	0

LM-80 Qualified • LM-79 Certified Photometry

* LED manufacturers maintain a tolerance of ±7% on flux (lumens) and power (electrical) measurements. Kirlin photometrics are actual test data from Independent Testing Laboratories (ITL) where photometry was measured from 2000 lumen (-2000L) light engines (within the established tolerance).

▲ Cone of Light Key
Dia. (in ft.) shown is where FC
value is half the FC at nadir.

Dist. Distance (Ft.) from fixture
FC Footcandles at nadir (0°)
Dia. Circle of light at 50% of FC

SUBMITTAL DATA

JOB NAME

TYPE

VOLTAGE

CATALOG NUMBER

APPROVAL STAMP



CATALOG #	TYPE
JOB NAME	VOLTAGE

LED 6" Square Downlight Upgrade Kit • UL Wet

10% Dimming • 3 Distributions • 4 CCT • 3-Step Binning
 Regressed Lens • Specular Trim • For Existing Kirlin Housings

Specifications

Optical Assembly

Delivered System Performance*

- Lumen Series: **MUST SPECIFY**
 -6500L: 6500 nominal lumens (74W).
- Distribution: WFL or -SPT.
 Optional: -MFL or -SPT.
- Color temperature: 3500°K standard.
 Optional: -27K, -30K or -41K.
- CRI: 80+. Exceptionally consistent color.
 Optional: -HC (90+).
- LM-80 Qualified LEDs provide up to 60,000 hour life (L70).
- Fully sustainable: removable for servicing.

Thermal Management System

- All aluminum heat sink and components maximize cool operation and long life while minimizing maintenance.

LED Power Supply - Included

- 0-10V CCR dimming standard (100-10%) or see Options.**
- 120-277V / 50-60Hz standard. Load insensitive. Also see Option -97.
- Suitable for outdoor / indoor use: -30°C (-22°F) to 50°C (122°F).

Trim and Lens Assembly

- Specular clear aluminum self-flanged square downlight cone with high efficiency reflector above.

Installation (Indoor or Outdoor)

- Simple, secure retention of entire kit into existing Kirlin recessed housing aperture.
- Fully sustainable: Revitalize existing fixtures without disturbing the ceiling.

UL, C-UL (Canada) Classified Kit

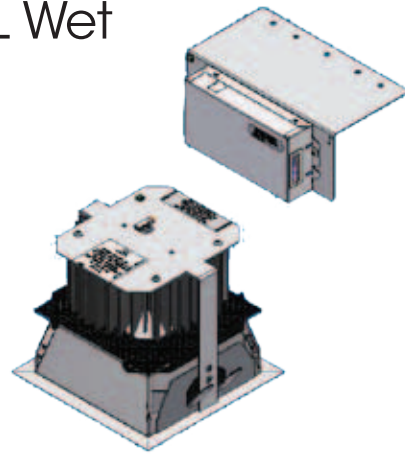
- Wet, damp or dry locations, covered ceilings, for use in Kirlin fixtures (UL Listed).
- Suitable for all Kirlin housings with a minimum 6.25" depth x 11.75" square size.

IEC & FCC Compliance

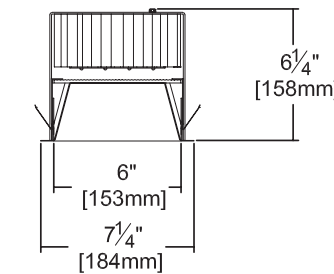
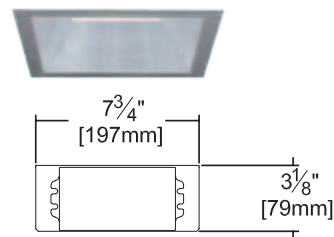
- Meets IEC/EN 60601-1-2 electromagnetic compatibility standard for medical electrical equipment.
- FCC Part 15 certified for EMI/RFI emissions.

5 YEAR
Limited Warranty
 • Complete standard fixture.

LKS-06074-6500L



Wide Flood Distribution
 and **3500°K** Standard
 (or see Options)



Ceiling Cut-out 6 3/4" Sq.

- 32 White oversize trim ring. Specify O.D.
- 37F Dark bronze acrylic enameled cone flange.
- 38F Black acrylic enameled cone flange.
- 45 Gasket between trim flange and ceiling.
- 70 SofTex™ clear self-flanged cone.
- 94 Custom color/finish. Specify. Consult factory.
- BG Anti-microbial Kirlin BioGard™ white (only) trim finish instead.
- WA White acrylic (flat) diffuser instead; will produce wide flood distribution.

Other

- 99 Special modification. Consult factory.

MUST SPECIFY	OPTIONAL	Ordering Example: LKS-06074-6500L-30K-MFL
Product Number	Options	
LKS-06074-6500L	See "Options" below	

Options

Input Power

- 97 Specify other voltage. Consult factory.

Power Supply (0-10V dim to 10% Std)

- 29 **Two wire** full range (100-1%) PWM dimming instead (Lutron). **120V only.** Consult factory. Not for use with Option -E1.
- D1 0-10V 1.0% dimming instead.
- D6 Triac (incandescent) dimming driver instead. 100-10%. 120V only.
- ECO Digital driver for Lutron EcoSystem controls. Dims to 1% or consult factory.
- E1 Remote emergency inverter for 40% of rated lumens. Run time: 90+ minutes. 120 **or** 277V, 60Hz input only. Specify voltage. Not for use with Option -29.

Color (CCT and CRI) - 35K Std.

- 27K Color temperature 2700°K instead.
- 30K Color temperature 3000°K instead.
- 41K Color temperature 4100°K instead.
- HC 90+ CRI instead.

Distributions (WFL Standard)

- MFL Medium flood distribution.
- SPT Spot distribution.

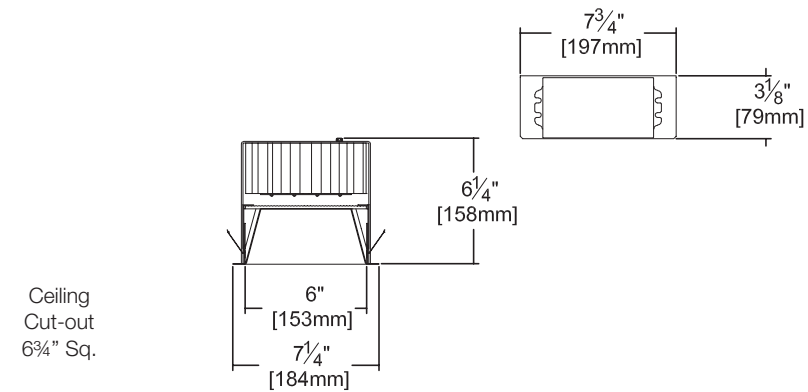
Trim (Specular Standard)

- 13 Clear poly lens below lens. Photometric distribution is unaffected.
- 23 Frosted microprismatic lens instead.
- 30 All white acrylic enameled cone.
- 31 White acrylic enameled cone flange.

LKS-06074-6500L

PERFORMANCE

Dimensions



Detailed Photometry - Installed Fixture

Photometric testing done in accordance with IESNA LM-79

Photometry from I.T.L., Boulder, CO

-6500L STANDARD (WFL)

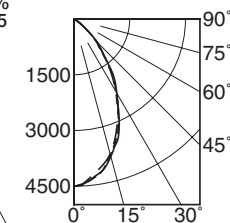
Lumens: 4680
 Beam: ~19°
 SC: 0.9
 LPW: 64
 Efficiency: 58.3%
 ITL Test: 86455



Total System Watts 72.8

Cone of Light ▲

Dist.	FC	Dia.
6	125.2	5.3
8	70.4	7.1
10	45.1	8.8
12	31.3	10.6
14	23.0	12.4
16	17.6	14.1



CANDLEPOWER DISTRIBUTION					
	0.0	22.5	45.0	67.5	90.0
0	4506	4506	4506	4506	4506
5	4392	4360	4336	4350	4383
15	3784	3711	3760	3742	3829
25	2821	2805	2793	2838	2865
35	1778	1750	1717	1798	1841
45	850	784	851	807	873
55	170	201	226	206	176
65	4	4	7	4	4
75	1	1	1	1	1
85	0	0	0	0	0
90	0	0	0	0	0

-6500L Option -SPT

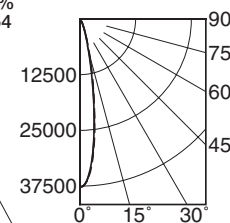
Lumens: 6450
 Beam: ~19°
 SC: 0.4
 LPW: 88
 Efficiency: 82.9%
 ITL Test: 86454



Total System Watts 73.4

Cone of Light ▲

Dist.	FC	Dia.
6	1047.9	2.0
8	589.4	2.6
10	377.2	3.3
12	262.0	3.9
14	192.5	4.6
16	147.4	5.2



CANDLEPOWER DISTRIBUTION					
	0.0	22.5	45.0	67.5	90.0
0	37723	37723	37723	37723	37723
5	32037	31843	31643	31467	31438
15	8540	8475	8152	7741	7599
25	1901	2046	2123	1878	1703
35	601	660	676	585	527
45	197	204	230	185	182
55	31	42	51	38	27
65	1	1	2	1	1
75	0	0	0	0	0
85	0	0	0	0	0
90	0	0	0	0	0

-6500L Option -MFL

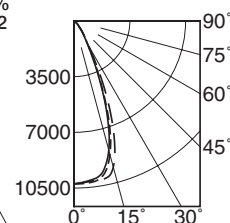
Lumens: 6086
 Beam: ~41°
 SC: 0.7
 LPW: 83
 Efficiency: 78.3%
 ITL Test: 86452



Total System Watts 73.3

Cone of Light ▲

Dist.	FC	Dia.
6	284.3	4.5
8	159.9	6.0
10	102.4	7.5
12	71.1	9.0
14	52.2	10.5
16	40.0	12.0



CANDLEPOWER DISTRIBUTION					
	0.0	22.5	45.0	67.5	90.0
0	10235	10235	10235	10235	10235
5	10214	10153	10140	10111	10086
15	8678	9074	9504	8809	8402
25	3428	3729	4137	3537	3235
35	1038	1012	988	972	958
45	329	318	350	298	290
55	56	69	79	64	53
65	1	2	3	2	1
75	1	0	0	0	0
85	0	0	0	0	0
90	0	0	0	0	0

LM-80 Qualified • LM-79 Certified Photometry

* LED manufacturers maintain a tolerance of ±7% on flux (lumens) and power (electrical) measurements. Kirlin photometrics are actual test data from Independent Testing Laboratories (ITL) where photometry was measured from 8024 lumen (-6500L) light engines (within the established tolerance).

▲ Cone of Light Key
 Dia. (in ft.) shown is where FC value is half the FC at nadir.

Dist. Distance (Ft.) from fixture
 FC Footcandles at nadir (0°)
 Dia. Circle of light at 50% of FC

SUBMITTAL DATA

JOB NAME

TYPE

WATTAGE

VOLTAGE

CATALOG NUMBER

APPROVAL STAMP



CATALOG #	TYPE
JOB NAME	VOLTAGE

LED 8" Square Downlight Upgrade Kit • UL Wet

10% Dimming • 3 Distributions • 4 CCT • 3-Step Binning
 Regressed Lens • White Trim • For Existing Kirlin Housings

Specifications

Optical Assembly Delivered System Performance*

- Lumen Series: **MUST SPECIFY**
 -6500L: 6500 nominal lumens (74W).
- Distribution: WFL standard.
 Optional: -MFL or -NFL.
- Color temperature: 3500°K standard.
 Optional: -27K, -30K or -41K.
- CRI: 80+-. Exceptionally consistent color.
 Optional: -HC (90+).
- LM-80 Qualified LEDs provide up to 60,000 hour life (L70).
- Fully sustainable: removable for servicing.

Thermal Management System

- All aluminum heat sink and components maximize cool operation and long life while minimizing maintenance.

LED Power Supply - Included

- 0-10V CCR dimming standard (100-10%) or see Options.**
- 120-277V / 50-60Hz standard. Load insensitive. Also see Option -97,
- Suitable for outdoor / indoor use:
 -30°C (-22°F) to 50°C (122°F).

Trim and Lens Assembly

- Tapered aluminum all white smooth self-flanged flare trim.
 - Regressed tempered prismatic spread lens.
- Installation (Indoor or Outdoor)**
- Simple, secure retention of entire kit into existing Kirlin recessed housing aperture.
 - Fully sustainable: Revitalize existing fixtures without disturbing the ceiling.

UL, C-UL (Canada) Classified Kit

- Wet, damp or dry locations, covered ceilings, for use in Kirlin fixtures (UL Listed).
- Suitable for all Kirlin housings with a minimum 6.25" depth x 11.75" square size.

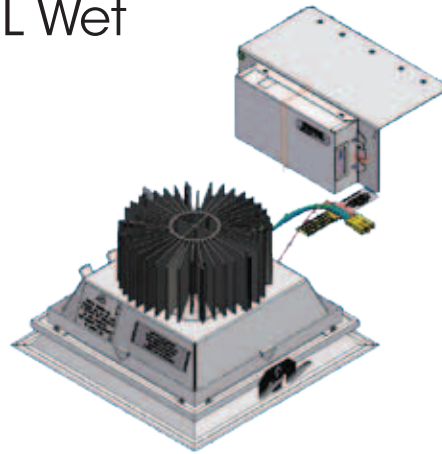
IEC & FCC Compliance

- Meets IEC/EN 60601-1-2 electromagnetic compatibility standard for medical electrical equipment.
- FCC Part 15 certified for EMI/RFI emissions.

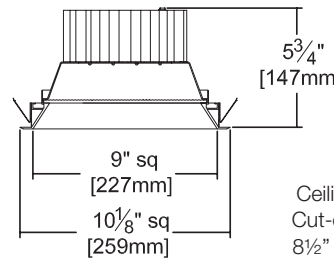
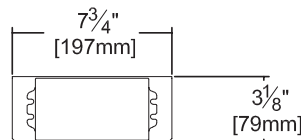
5 Year Limited Warranty

- Complete standard fixture.

LKS-08074-6500L



Wide Flood Distribution and 3500°K Standard
 (or see Options)



MUST SPECIFY	OPTIONAL	Ordering Example: LKS-08074-6500L-30K-MFL
Product Number	Options	
LKS-08074-6500L	See "Options" below	

Options

Input Power

- 97 Specify other voltage. Consult factory.

Power Supply (0-10V dim to 10% Std)

- 29 **Two wire** full range (100-1%) PWM dimming instead (Lutron). **120V only.** Consult factory.
- D1 0-10V 1.0% dimming instead.
- D6 Triac (incandescent) dimming driver instead. 100-10%. 120V only.
- ECO Digital driver for Lutron EcoSystem controls. Dims to 1% or consult factory.
- EI Remote emergency inverter for 100% of rated lumens. Run time: 90+ minutes. 120 or 277V, 60Hz input only. Specify voltage. Not for use with Option -29.

Color (CCT and CRI) - 35K Std.

- 27K Color temperature 2700°K instead.
- 30K Color temperature 3000°K instead.
- 41K Color temperature 4100°K instead.
- HC 90+ CRI instead.

Distributions (WFL Standard)

- MFL Medium flood distribution.
- NFL Narrow flood distribution.

Lens and Trim

- 13 Clear poly lens below standard lens. Photometric distribution is unaffected.
- 23 Frosted microprismatic lens instead.
- 32 White oversize trim ring. Specify O.D.

- 35T Silver (natural aluminum) acrylic enameled trim.
- 37T Dark bronze acrylic enameled trim.
- 38T Black acrylic enameled trim.
- 45 Gasket between trim flange and ceiling.
- 46 Gasket between trim and lens.
- 94 Custom color/finish. Specify. Consult factory.
- CF Custom color filter (Rosco). Specify.
- BG Anti-microbial Kirlin BioGard™ white (only) trim finish instead.
- WA White acrylic (flat) diffuser instead; will produce wide flood distribution.

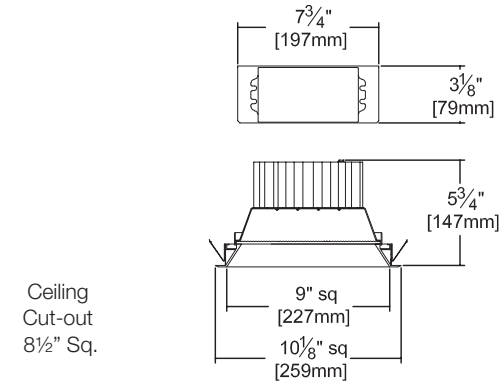
Other

- 99 Special modification. Consult factory.

LKS-08074-6500L

PERFORMANCE

Dimensions



Detailed Photometry - Installed Fixture

Photometric testing done in accordance with IESNA LM-79

Photometry from I.T.L., Boulder, CO

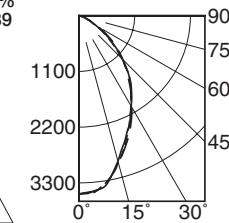
-6500L STANDARD (WFL)

Lumens: 5248
 Beam: ~50°
 SC: 1.0
 LPW: 72
 Efficiency: 65.4%
 ITL Test: 86339



Cone of Light ▲

Dist.	FC	Dia.
6	97.7	5.6
8	55.0	7.5
10	35.2	9.4
12	24.4	11.3
14	17.9	13.2
16	13.7	15.0



Total System Watts 73.1

	CANDLEPOWER DISTRIBUTION				
	0.0	22.5	45.0	67.5	90.0
0	3518	3518	3518	3518	3518
5	3500	3477	3478	3497	3472
15	3003	3019	3013	2990	2973
25	2351	2390	2410	2380	2367
35	1792	1778	1777	1804	1808
45	1202	1208	1225	1231	1210
55	621	637	698	656	645
65	227	236	266	248	233
75	54	60	67	60	52
85	13	14	13	13	13
90	0	0	0	0	0

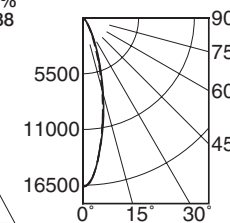
-6500L Option -NFL

Lumens: 6050
 Beam: ~26°
 SC: 0.5
 LPW: 83
 Efficiency: 75.4%
 ITL Test: 86338



Cone of Light ▲

Dist.	FC	Dia.
6	462.0	2.7
8	259.9	3.7
10	166.3	4.6
12	115.5	5.5
14	84.9	6.4
16	65.0	7.3



Total System Watts 73.3

	CANDLEPOWER DISTRIBUTION				
	0.0	22.5	45.0	67.5	90.0
0	16631	16631	16631	16631	16631
5	14828	14825	14846	14821	14812
15	7289	7396	7536	7669	7699
25	2537	2665	2846	2895	2932
35	927	976	1052	1051	1025
45	410	430	471	461	443
55	217	225	233	233	229
65	110	112	112	115	114
75	38	38	36	37	38
85	5	6	5	6	5
90	0	0	0	0	0

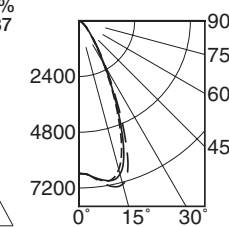
-6500L Option -MFL

Lumens: 5987
 Beam: ~47°
 SC: 0.8
 LPW: 82
 Efficiency: 74.6%
 ITL Test: 86337



Cone of Light ▲

Dist.	FC	Dia.
6	182.6	5.3
8	102.7	7.0
10	65.7	8.8
12	45.6	10.5
14	33.5	12.3
16	25.7	14.0



Total System Watts 73.3

	CANDLEPOWER DISTRIBUTION				
	0.0	22.5	45.0	67.5	90.0
0	6572	6572	6572	6572	6572
5	6757	6759	6760	6762	6746
15	6626	6918	7289	7064	6833
25	3520	3654	3912	3729	3655
35	1246	1288	1400	1338	1310
45	510	542	605	570	535
55	239	248	274	248	241
65	114	116	119	117	115
75	35	37	36	37	35
85	6	6	5	5	5
90	0	0	0	0	0

LM-80 Qualified • LM-79 Certified Photometry

* LED manufacturers maintain a tolerance of ±7% on flux (lumens) and power (electrical) measurements. Kirlin photometrics are actual test data from Independent Testing Laboratories (ITL) where photometry was measured from 8024 lumen (-6500L) light engines (within the established tolerance).

▲ Cone of Light Key
 Dia. (in ft.) shown is where FC value is half the FC at nadir.

Dist. Distance (Ft.) from fixture
 FC Footcandles at nadir (0°)
 Dia. Circle of light at 50% of FC

SUBMITTAL DATA

JOB NAME

TYPE

WATTAGE

VOLTAGE

CATALOG NUMBER

APPROVAL STAMP

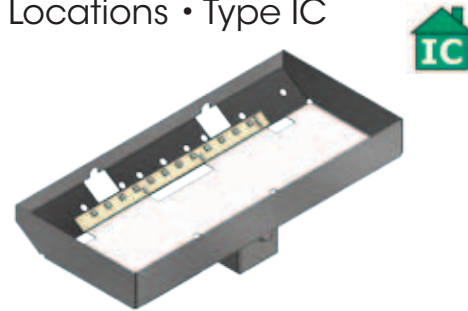


CATALOG #	TYPE
JOB NAME	VOLTAGE

LED NightLight Upgrade Kit for Existing Luminaire

LKN-07005

UL Classified Damp or Dry Locations • Type IC



Retrofits into
Existing Kirlin
Louvered
or Lensed
NightLight



Note: Faceplate not included;
see LKN-07101 for
Upgrade Kit with faceplate

Specifications

LED

- White module, mounted to front of specular reflector.
- 5.5 system watts - energy efficient, uniform luminance, cool.
- 68 lumens typical; 125 lumens with Option -HW.

LED Power Supply / Driver

- Max 13 volt DC and 4 watt fixed output. Electronically stabilized. Mounted internally to specular reflector.
- Minimum operating temperature -4°F (-20°C).
- 120-277 volt standard. Load insensitive.

Installation

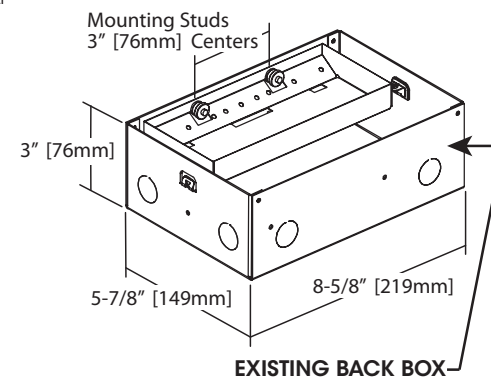
- Installs on two mounting studs in original fixture.
- UL, C-UL (Canada) Classified Kit**
- Type IC, damp or dry locations, covered ceilings, for use in Kirlin NightLights (UL Listed).

IEC & FCC Compliance

- Meets IEC/EN 60601-1-2 electromagnetic compatibility standard for medical electrical equipment.
- FCC Part 15 certified for EMI/RFI emissions.

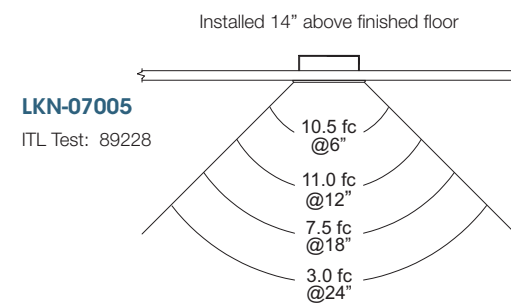
5 Year FIVE YEAR Limited Warranty

- Complete kit.

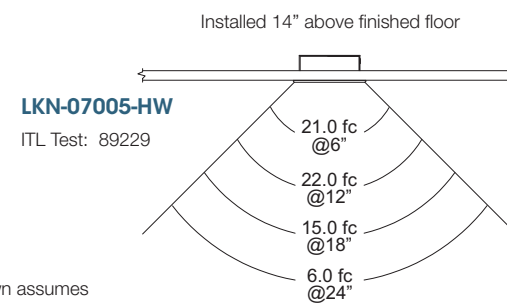


Performance at a Glance

Footcandle Performance On the Floor - Top View
Photometry from I.T.L., Boulder, CO



Test data shown assumes standard louvered trim



Options

Wattage / Voltage / Battery Pack

-HW Higher light output. Approximately doubles light output and system watts.

Other

-99 Special modification. Consult factory.

For Upgrade Kit with faceplate included see LKN-07101

